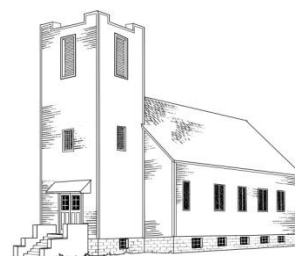


# ST. JOHN'S LUTHERAN



## BURT, IOWA



# 100<sup>th</sup> Anniversary

## 1913-2013



Jesus said, “Let’s go on to the small towns that are nearby, so that I may preach there also, for this is why I have come.”

Mark 1:38



## TABLE OF CONTENT

Message from Pastor _____	4
History of Missouri Synod _____	5
History of Zion Lutheran Church Plum Creek Township _____	14
History of St. John's Lutheran Church of Burt, Iowa _____	16
Foundation Families _____	37
Remember When _____	41
Pastors of St. Johns _____	42
Daughters and & Sons of St John's _____	45
Veterans _____	48
Plum Creek Zion Baptism _____	49
St. John's Baptism _____	51
Plum Creek Zion Confirmation _____	59
St. John's Confirmation _____	60
Plum Creek Zion Marriages _____	68
St. John's Marriages _____	69
Plum Creek Zion Burials _____	75
St. John's Deaths _____	75
Official Acts of St. John's _____	80
Organizations of St. John's _____	81
Where are our Pastor's Now _____	93
Membership of St. John's _____	97

## A MESSAGE FROM OUR PASTOR

He remembers His **Testament** forever;

The **Word** He appointed for a thousand generations.

-Psalm 105:8

Throughout the history of the Church, there has been constant change. The Church began as a small persecuted group forced underground by the threat of execution. Then it became the religion of an empire and of the leading nations of the world in the centuries that would follow. In the midst of all this, the Word of God, and the Truth of Christian teaching remained the same and gave answer to numerous challenges that would seek to undermine that Truth.

This congregation has seen change of its own through buildings and pastors and generations, and again what remained the same is the Truth of God's Word and the reliability of His promises. Even in this centennial year, we continue to face new challenges as we and our neighboring congregations explore how rural communities can continue to be provided with the Preaching of the Gospel and the Sacraments of forgiveness in the face of dwindling populations and growing social and political challenges that are being brought against the Truth.

This is the promise of our centennial verse. Regardless of how popular opinion or the laws of the land change, God's promises endure. Regardless of how the structure, organization, and appearance of congregations changes, the Divine Service, the Word of God, and authentically Lutheran teaching and identity remain to point us to Christ. He who has promised this is faithful to follow through as he has done throughout the first century of our congregation and the centuries of the Church.

May this history remind you of God's faithfulness to generations past, assure you of His dependability in generations to come, and inspire you to fervently pursue the preservation and extension of this truth in your own life and into that of the communities served by St. John's.



A handwritten signature in black ink, reading "John Peterson". The signature is fluid and cursive, with a long horizontal stroke extending to the right.

Pastor Peterson

## HISTORY OF THE LUTHERAN CHURCH MISSOURI SYNOD

Lutherans were among the first to explore and settle America. Jonas Bronck was a peacemaker among the Indians. Johann Conrad Weiser negotiated numerous Indian Treaties in Pennsylvania, and gained the support of many tribes for the English colonists against the French. He left such an influence among his powerful Indian friends that they swung from the English to the colonist at the break of the American Revolution.

The first Lutheran pastor reached American soil a year before the pilgrims. The Dutch in New York and the Swedes in Delaware formed the first Lutheran Congregations in North America.

In 1748, the Lutherans effectually organized into a company of congregations, called a synod. The leader, Henry Melchior Muhlenberg, is the founder of Lutheranism in America. Many different synods arose. In 1820, they founded the General Synod.

With the influx of many Lutheran immigrants in 1820, new groups of Lutherans appeared. In 1838, a large body of Saxon Lutherans arrived and settled in Perry County, Missouri. Under the leader, Rev. C.F.W. Walther, these Lutherans joined the scattered Lutherans of the Midwest in 1847, to form the church body, Lutheran Church Missouri Synod.

Sessions of the organizational meetings were held in Chicago, Illinois. Twenty-two pastors signed the constitution.

The work of the Lutheran Church-Missouri Synod in Iowa goes back as far as 1855, when Pastor Friedrich Lochner began work at Iowa City. Johnson County served as a staging area for European immigrants, and as the railroads pushed westward the settlers followed, including our Missouri Synod forebears. So it happens that several of the congregations of our district have already celebrated over 100 years of God's mercies.

The old Iowa District was organized in 1879 at a meeting in Fort Dodge with a total of 61 in attendance representing 23 congregations. The influx of German immigrants caused the churches to flourish, so that by 1934 there were 178 Missouri Synod congregations in Iowa.

This growth created some problems. For conventions the delegates met in churches. To meet in a hotel or some other facility was unthinkable! Host congregations had to provide meeting space, lodging and meals for nearly 300 delegates and guests. Only a few congregations were large enough to handle the burden, and they had to do it repeatedly, since district conventions were held two out of every three years.

What to do? Some were bold enough to suggest division. By a narrow vote in 1931 it was resolved to petition synod for permission to divide. Synod denied the petition, because little information submitted with the petition. But when the request was resubmitted to the 1935 convention of synod, it was approved. So the division took place – undoubtedly with many heartaches and misgivings. The constituting convention of the New Iowa District West took place at LuVerne in 1936. The new district

had 111 congregations. Now, after 52 years, we number 175, with a combined membership as large as the former Iowa District at the time of the division. See how the Lord has blessed us!

In 1976 Concordia Theological Seminary, Springfield, Illinois, was moved to Fort Wayne, Indiana, to be located on the campus of the former Senior College. In about 1958, the Senior College had been opened in Fort Wayne, Indiana. Pre-ministerial students from the various synodical junior colleges (and, by that time, some of the junior colleges were becoming four-year colleges) had to attend the Senior College to complete their undergraduate training before entering Concordia Seminary, St. Louis, Missouri. That sequence lasted until about 1975. The few years prior to the move, the students from the junior colleges who did not want to take that route or attend the St. Louis seminary because they considered its faculty too liberal opted to attend Concordia Theological Seminary, Springfield, Illinois, because it accepted students who did not have an undergraduate degree and because its faculty was considered more conservative than the faculty of Concordia Seminary, St. Louis. As enrollment at the Senior College dwindled, the decision was made to close the Senior College and move Concordia Theological Seminary, Springfield, Illinois, to the newer campus at Fort Wayne, Indiana.

The walkout of 1974 from Concordia Seminary, St. Louis, was not the end of the controversy, as no one had yet left the Synod, only positions of authority within it. The final chapter would come with the question of whether graduates of Seminex could be ordained and called to congregations of the Missouri Synod. Eight District Presidents thought so, and authorized such ordinations. In April 1976, Jacob Preus fired four of the eight District Presidents, and that summer the exodus out of Missouri began. The moderates formed the Association of Evangelical Lutheran Church (AELC), and 150 congregations followed. An early goal of the AELC was unity with other Lutherans; a goal achieved twelve years later in the formation of the Evangelical Lutheran Church in America (ELCA) from the AELC, the American Lutheran Church, and the Lutheran Church in America in 1988.

In 1977 LCMS established Lutheran Youth Fellowship as a national youth group. Between 1970 and 1977 some synodical districts formed their own district youth group organization. The Dallas convention authorized the creation of the Commission on Black Ministry. The Dallas convention voted to continue pulpit and altar fellowship with the American Lutheran Church, but it was “fellowship in protest.” One of the problems was the fact that the American Lutheran Church was ordaining women into the pastoral ministry. The 1979 synodical convention continued the “fellowship in protest” status with the American Lutheran Church, but at the 1981 convention pulpit and altar fellowship with the American Lutheran Church was ended.

In 1980 the first national youth gathering sponsored by the Youth Ministry Committee of the LCMS District and Congregational Services Board was held in Fort Collins, Colorado. The national youth gatherings are held on a triennial basis. The 2013 national youth gathering will be held in San Antonio, Texas, July 1-5.

Dr. Joseph Lavalais elected first black vice president of the Synod in 1981. Ralph A. Bohlmann became synodical president until 1992. The cornerstone laid in 1982 for LCMS International Center in Kirkwood,

Missouri; dedicated in 1983. The Synodical headquarters moved from its former location at 210 N. Broadway, St. Louis, Missouri. During 1984 the Synod unveils new logo.

During 1989 Synod's three Canadian Districts (comprising 83,000 members) became autonomous and formed Lutheran Church–Canada. The *Christian Cyclopedia* (Until very recently the *Christian Cyclopedia* was available online on Synod's website. It has been removed because Synod is revising its website. The *Christian Cyclopedia* is now available for purchase on CD from Concordia Publishing House. I received an email on 5/5/11 stating that the Synod is working to include it on its website again in the future) notes that the Walther League formally ceased to exist in April 1989, but no history of the decline of the League or the reasons for its decline and eventual termination are given. In actuality, the Walther League as an organization youth came to an end much earlier than that. The seeds of Synod's serious discontent with the Walther League came to full bloom "when the Walther League leaders proposed syndicated columnist Ann Landers, a Jew, and Pete Seeger, a folksinger, as keynote 'voices from the wilderness' for the 1965 Walther League convention at Squaw Valley, California . . . ." (*Hopes and Dreams of All*, p. 266) (Opponents of having Pete Seeger at the Walther League convention claimed that he was a communist.) One of the difficulties for the Walther League was that its members were becoming younger and younger and did not have the financial resources to support the League. "Beginning in 1963 . . . the League and synod had agreed upon a transition plan whereby the Board for Young People's Work would assume complete financial responsibility for work with youth by 1967." (*Hopes and Dreams of All*, p. 268) Jon Pahl in *Hopes and Dreams of All* (p. 281) writes that the "final demise . . . of the Walther League as a youth-led, issue-oriented organization" took place in 1977. He notes that the last president was Charles Wright, who was in office from 1965 to 1968, the last Executive Secretary as Dan Stolle, who was in office from 1973-1977, and the last International Walther League Convention as being held in Rosebud, South Dakota, in 1970.

In 1992 the Rev. Alvin L. Barry defeated the Rev. Ralph Bohlmann to become the next synodical president. He held that position until his death on March 23, 2001. He was born in Woodbine, Iowa. He was succeeded by Dr. Robert T. Kuhn, first vice-president of the Synod who served until the end of Barry's third term on 31 August 2001. At the Synodical convention in 2001 the Rev. Gerald Kieschnick was elected president. Mission began in states of the former Soviet Union.

1993 brought the use of satellite technology; Synod televised "Easter Live 'Round the World" simultaneously from four continents. In 1997 LCMS Satellite Service inaugurated. The 150<sup>th</sup> anniversary of the Synod (April 26) *The Lutheran Witness* published two issues, Volume 116, Numbers 4 and 5 (April and May 1977) dedicated to the history of the Synod and the celebration of the 150<sup>th</sup> anniversary. These two issues contained articles by various authors on various aspects of the history of the LCMS from its beginnings to projections by various individuals concerning what the LCMS might look like on its 200<sup>th</sup> anniversary.

During 1999 an Internet movement called "Jesus First" began. It described itself as having begun as "an effort to bring a change in leadership" of the LCMS. It did so by formulating strategic plans to influence delegate selection; nominate moderate candidates for synodical offices, boards, and commissions; and

publicize issues through its newsletter. Information on its activities and viewpoints from December 2001 to September 2010 can be found on its website: [www.jesusfirst.net](http://www.jesusfirst.net).

Gerald Kieschnick was elected Synodical president at the July 15-19, 2001, convention with 600 (50.8%) of the 1182 votes cast. The Terrorist attack on the World Trade Center happened on September 11. September 23, 2001, the Rev. David Benke, president of The Lutheran Church—Missouri Synod’s Atlantic District and pastor of St. Peter’s Lutheran Church in Brooklyn, participated in “A Prayer Service for America” at Yankee Stadium with politicians, celebrities, and representatives from various faiths, including Catholic, Jewish, Muslim, and Hindu clerics. This led to a division in Synod between those who supported his participation and those opposed to it on the grounds that it violated issues related to “unionism and syncretism” statements in the synodical constitution. This led to an investigation of the whole matter.

June 25, 2002, Second Vice President Wallace Schulz completed his investigation of the Rev. David Benke’s participation in the Yankee Stadium event and, finding against him, placed him on suspended status. Also during 2002, the Rev. David Benke appealed Second Vice President Wallace Schulz’s decision. Lutheran Hour Ministries issued a “Crisis Statement” and announced that the Rev. Wallace Schulz had been relieved of his duties as Lutheran Hour Speaker. Lutheran Hour Ministries had apparently previously asked the Rev. Wallace Schulz not to accept the appointment to investigate District President David Benke’s participation in the Yankee Stadium event. Dr. Dale Meyer succeeded the Rev. Wallace Schulz as Lutheran Hour speaker, and the Rev. Dr. Ken Klaus succeeded Dr. Dale Meyer. The Rev. Gregory P. Seltz of Orange, California, has accepted the position of Speaker of The Lutheran Hour radio program. He will become full-time speaker on June 1, 2011.

During 2002 Lutheran Hour Ministries officially announced that it had terminated the Rev. Wallace Schulz from his position with the Lutheran Hour. The Rev. Wallace Schulz accepted a call to the Lutheran Heritage Foundation. LCMS World Mission adopted the following purpose statement under the umbrella of the **Ablaze!** movement: “Praying to the Lord of the Harvest, LCMS World Mission, in collaboration with its North American and worldwide partners, will share the Good News of Jesus with 100 million unreached or uncommitted people by the 500th anniversary of the Reformation in 2017.”

April 5-7, 2003 President Kieschnick unveiled “Ablaze,” a new missions initiative at the Council of Presidents Meeting at Concordia Theological Seminary in Fort Wayne. This program aims to reverse Synod’s membership losses by identifying the most “effective” congregations (measured in terms of statistical growth) and developing “formulas” for other LCMS congregations to achieve this numerical “success.” See [www.lcms.org/page.aspx?pid=649](http://www.lcms.org/page.aspx?pid=649) for a statement on Synod’s website about Ablaze and records of people who have shared witnessing to their faith. The Benke matter was officially closed and his suspension was lifted.

July 10-15, 2004, the 62<sup>nd</sup> Regular Convention of The Lutheran Church—Missouri Synod held in St. Louis. The Rev. Gerald Kieschnick was reelected president on the first ballot. The 2004 Synodical convention marked the official launch of **Ablaze!**—a global Lutheran mission movement to share the Good News of



Jesus with 100 million unreached or uncommitted people by 2017. Along with it, “Fan into Flame” is the campaign to gather financial support for the **Ablaze!** movement.

At the 2007 Synodical convention Gerald Kieschnick was reelected synodical president on the second ballot. William Diekelman was reelected first vice president on the third ballot. Both are full-time positions. The other vice presidents in order are Paul Maier (second vice president), John Wohlrabe, Jr. (third vice president), Dean Nadasdy (fourth vice president), and David Buegler (fifth vice president).

At the 2007 Synodical convention, Resolution 4-01A, “To Plan Summit to Restore Harmony,” was passed by a vote of 1,014 for, and 169 against. The impetus for this resolution was finances, namely “the hindrances to any model for funding the mission caused by internal ‘division in our Synod and the resultant mistrust.” The resolves read: “*Resolved*, That the Council of Presidents and Board of Directors as elected leaders of the Synod be given the responsibility to initiate a specific plan for the sake of the whole church to restore harmony in our Synod; and be it further *Resolved*, That they bring together a representative group of respected leaders throughout this church for a summit, and that at the end of this summit these church leaders present to the Council of Presidents and to the Board of Directors a strategy toward harmony that demonstrates how this great church body can provide a God-pleasing witness of our confession and practice; and be it finally *Resolved*, That the product of their coming together honor the Scriptures and Confessions and dishonor the work of Satan that diverts us from the “way of the Lord.”

The 2007 Synodical convention also recognized the diverse viewpoints in our church body concerning worship and the tensions they produce. The delegates passed two resolutions to deal with the issue: Resolution 2-01: To Foster Greater Understanding of Worship through Theological Conferences, and Resolution 2-02: To Provide Guidance and Direction for Use of Diverse/Contemporary Worship Resources.

At the 2007 Synodical convention Resolution 8-07S: To Call Special Convention to Amend Synod Structure and Governance was passed. Two of the resolves read: “*Resolved*, that we as delegates of this convention direct President Kieschnick to meet with the Council of Presidents within the next 90 days, after consulting with our two seminary presidents, the Commission on Theology and Church Relations, the Board of Directors, the Vice-President–Finance–Treasurer, other officers of the Synod and the Commission on Constitutional Matters; and be it further *Resolved*, that if President Kieschnick and two thirds of the district presidents determine at that time to call a special convention, we stand ready to serve.” After careful consideration, it was decided not to call a special convention. The recommendation of the Blue Ribbon Task Force on Synod Structure and Governance will be presented to and considered at the next regular convention of the Synod in 2010.

A decision to discontinue “Issues, Etc.” on KFUD AM Radio was made by Mr. David Strand, Executive Director for Communications Services of The Lutheran Church–Missouri Synod, March 18, 2008, which was Tuesday of Holy Week. According to a statement issued after the decision was made public, the stated reason was for fiscal reasons. The host, the Rev. Todd Wilken, and producer, Jeff Schwarz, were fired, apparently without warning, and all reference to the show was taken off KFUD's website. This

decision and firing was protested by certain conservative groups in the Synod who are concerned because the Rev. Todd Wilken had a divine call to serve in this position, and this raises the issue of the handling of the divine call.

During 2008, in a letter in the *Wall Street Journal* regarding the cancellation of “Issues, Etc.” and the way it was handled, Mollie Ziegler Hemingway characterized the Missouri Synod as a deeply divided church. President Kieschnick quickly responded with another letter to the *Wall Street Journal*, chiding it for publishing Mollie Ziegler Hemingway’s letter and calling her characterizations of the Synod as “false and misleading.” Keep in mind the last Synodical convention’s overwhelming recognition of and call for resolution of the divisions in Synod.

Concordia Publishing House announced the continuation of Luther’s Works, American Edition, New Series, which would add 20 volumes to the previous 55. The first volume appeared in 2009, and the plan is to publish one new volume each year until these additional volumes are all published.

The 64<sup>th</sup> Regular Convention of The Lutheran Church—Missouri Synod was held in Houston, Texas, July 10-17, 2010. The Rev. Matthew Harrison was elected Synodical president on the first ballot. The Rev. Herbert Mueller was elected First Vice President. The Rev. John Wohlrabe, Jr. was elected Second Vice President, the Rev. Paul Maier was elected Third Vice President, the Rev. Daniel Preus was elected Fourth Vice President, and the Rev. Scott Murray was elected Fifth Vice President. As a result of the report of the Task Force on Synodical Harmony (*Convention Workbook*, pp. 74-76), Resolution 7-01: To Encourage Task Force on Synodical Harmony was passed. The three resolves of the resolution read:

*Resolved*, that the aforesaid report be made available to members of the Synod by publication on its Website; and be it further

*Resolved*, that the task force be encouraged in its continuing work of developing specific strategies to move us toward greater harmony in the LCMS; and be it further

*Resolved*, that the Synod at large be encouraged to continue its efforts to be in harmony with one another.

In response to the Blue Ribbon Task Force on Synod Structure and Governance (BRTFSSG) a number of resolutions related to its report were passed. One made changes to the way delegates are elected to the Synod convention: Resolution 8-05B. Another, Resolution 8-08A: To Realign the National Synod Ministries around Two Mission Boards. The first four resolves of this resolution read as follows:

*“Resolved*, that current bylaw responsibilities for the Commission on Theology and Church Relations (CTCR) and for the Commission on Doctrinal Review be retained. The Commission on Constitutional Matters (CCM) will continue to be responsible for interpreting the Constitution, Bylaws, and resolutions of the Synod, while the Commission on Handbook (COH) (presently called the Commission on Structure) will be responsible for the ongoing maintenance and management of the *Handbook* and for making recommendations to the

convention for modification of the same, the process of appointing the COH following the process used to appoint the CCM; and be it further

*Resolved*, That the national office operations be realigned so that (a) the existing boards and some staffed commissions are eliminated; (b) all staff performing functions ultimately assigned to the national office are accountable to an officer of the organization, with the exception of the CTCR; and © functions currently performed by the program boards and staffed commissions, with the exception of the CTCR, be realigned into a new two-office ministry structure or assigned to the Office of the President, the LCMS Board of Directors, districts, or other LCMS agencies; and be it further Resolved, That a Chief Mission Officer (CMO) (who shall be a minister of religion—ordained) position reporting to the Synod President be created by bylaw, to be responsible for supervising the day-to-day activities of the ministry functions of the national office. This position will be appointed by the President of the Synod with the mutual concurrence of the Board of Directors. The CMO will serve a three-year renewable term of office at the direction of the President of the Synod. The CMO, the Chief Financial Officer (CFO), and the Chief Administrative Officer (CAO) will be expected to work closely together in carrying out the programmatic, administrative, and financial functions of the national office in response to the Synod emphases selected by the national convention; and be it further

*Resolved*, that an Office of National Mission be responsible for coordinating national office ministry that is directed toward or serving domestic ministries and especially congregations and schools through their districts. Such ministries may include but not be limited to Lutheran school ministries and accreditation, human care and domestic mercy efforts, stewardship, evangelism, church planting and revitalization, and youth ministry; and be it further

*Resolved*, that an Office of International Mission be established to oversee the work of the LCMS in other countries. This office, among other functions, would place and support foreign missionaries, establish and maintain international schools, coordinate international relief efforts, and support and encourage the world of the Synod's international partner churches in conjunction with the Office of the President."

May 5 2011, Synod redesigned its website at [www.lcms.org](http://www.lcms.org) to make it easier for visitors to find the information they're seeking. Highlights of the new site -- which was launched April 25 -- include: 1. easier navigation, with Web pages organized in a more consistent way. 2. A centralized location for all resources for work, home and church. 3. A new media gallery, with all photos, videos and audio files in one place. 4. A consolidated newsroom, with the latest news and information about LCMS people, missions and ministries. 5. Direct links to LCMS social media pages and blogs, plus the ability to "like" articles and share content with others. 6. Helps for donors, such as an improved online giving catalog and the ability to view contributions and print receipts. 7. More customization, so that visitors may create an online account, manage subscriptions and flag their interests.

The website redesign took more than two-and-a-half years from inception to completion. Although the site underwent "cosmetic" changes and added some new features in 2009, the recent redesign was the first major overhaul of the site since 2002. Additional new features and improvements are expected to be added to the website in the coming weeks and months. "In a communication or technological sense, websites are the public faces of many organizations," said David L. Strand, executive director of LCMS Communications. "They are critical -- the first place people go to learn about a company's news, resources, opportunities and more. Our website is no different, and we believe our new one offers an array of attractive features for LCMS members and nonmembers alike," Strand said. "Of course, we'll make adjustments and otherwise improve the site as we go along, but we believe it sets us on a very good course." Designers of the new website offer one *caveat*: If previously-saved "bookmarks" related to the lcms.org site do not work, please visit the Web page you are seeking and save it again. Some earlier links are no longer compatible with the new system.

#### Presidents of the LCMS

1847–1850 - Carl Ferdinand Wilhelm Walther	1962–1969 - Oliver Raymond Harms
1850–1864 - Friedrich Conrad Dietrich Wyneken	1969–1981 - J. A. O. Preus II
1864–1878 - Carl Ferdinand Wilhelm Walther	1981–1992 - Ralph Arthur Bohlmann
1878–1899 - Heinrich Christian Schwan	1992–2001 - Alvin L. Barry
1899–1911 - Franz August Otto Pieper	2001–2001 - Robert T. Kuhn
1911–1935 - Friedrich Pfotenhauer	2001–2010 - Gerald B. Kieschnick
1935–1962 - John William Behnken	2010–Present - Matthew C. Harrison

#### Districts of the LCMS (35)

Atlantic = eastern half of New York State	English = congregations scattered throughout the USA
California-Nevada-Hawaii = California (except southern counties), Nevada (except southern tip), Hawaii	Florida-Georgia = Florida (except western tip), Georgia, and Bahamas
Central Illinois	Indiana = the State of Indiana and north central counties of Kentucky
Eastern = western half of New York State, Pennsylvania (except York County, and Garrett County, Maryland	Iowa East
	Iowa West

Kansas

Michigan = Lower Peninsula and eastern part of Upper Peninsula

Mid-South = Arkansas, Tennessee, and southern counties of Kentucky

Minnesota North = Northern counties and Douglas County, Wisconsin

Minnesota South = Southern counties

Missouri

Montana

Nebraska = the State except western "Panhandle"

New England = Maine, Vermont, New Hampshire, Massachusetts, Connecticut, and Rhode Island

New Jersey

North Dakota

North Wisconsin = including western part of Upper Peninsula of Michigan

Northern Illinois

Northwest = Washington, Oregon, Idaho, and Alaska

Ohio = Ohio, West Virginia, and northeastern counties of Kentucky

Oklahoma

Pacific Southwest = Arizona, southern counties of California, and southern tip of Nevada

Rocky Mountain = Colorado, Utah, New Mexico, El Paso County, Texas

SELG = congregations scattered throughout the USA

South Dakota

South Wisconsin = southern half of Wisconsin

Southeastern = Maryland (except Garrett County), District of Columbia, Delaware, Virginia, North Carolina, South Carolina, and York County, Pennsylvania

Southern = Louisiana, Mississippi, Alabama, and western tip of Florida

Southern Illinois

Texas = Texas (except El Paso County)

Wyoming = the State and western "Panhandle" of Nebraska **Electoral Circuits**

*2010 Handbook: The Lutheran Church—Missouri Synod - 3.1.2 a*

(a) An electoral circuit shall consist either of one or two adjacent visitation circuits, as shall be determined by each district on the basis of the following requirements: each pair of delegates shall represent from 7 to 20 member congregations, involving an aggregate communicant membership ranging from 1,500 to 10,000.

\*\*History up to 1988 taken from church history book,

\*\*History 1989 to 2012 provided by Rev. Albert H. Buelow, Archivist, Iowa District West.

## HISTORY OF ZION LUTHERAN CHURCH PLUM CREEK TOWNSHIP

The Plum Creek congregation was founded by Rev. C.F. W. Maass in 1886. At the time of its formal organization on Aug. 14, 1887, it was being served by Pastor Wm Faulstick of Whittemore. He served Plum Creek with devotion and success for 9 years in addition to his work at St. Paul's of Whittemore. In 1896 the members of the Zion Lutheran Church called Candidate M. Behrends. He was ordained and installed on Aug. 2, 1896.

A Resolution was signed on September 7, 1890 for the incorporation of the Evangelical Lutheran Church in Plum Creek Township. The trustees of the new congregation called Zion Lutheran were F. Miller, Wm. Bohn and H. Boehle.

It was originally dedicated on July 24, 1892 for a total cost of \$1,612.73 completely furnished.

In April 1910, the Rev. G.C. Treskow became Behrends successor in Plum Creek and also assumed charge of Trinity in Algona. Regular services were also conducted at Burt and Bancroft by the new Plum Creek pastor. In the records of 1912 it is documented that pastor Treskow would be paid \$1.00 for each service he conducted in the summer months and \$1.50 for each winter service.

From the 20<sup>th</sup> anniversary book let of Trinity, Algona, authored by Pastor Herman J. Dubbe, it appears that Plum Creek Zion celebrated its 25<sup>th</sup> Anniversary in 1912. The church then disbanded, a majority of its members forming St. John's Lutheran of Burt.

The men and boys sat on one side of the church and. the women and girls on the other, with the children going back and forth.

The people went to church with horses and took their lunch along because it got so late. Behind the church was a long horse barn where parishioners unhitched horses and buggies before attending church services. Pastor Behrends had a fancy black horse and buggy with which to visit the people. Pastor Treskow bought the first car in the congregation, a 1912 Model. T.

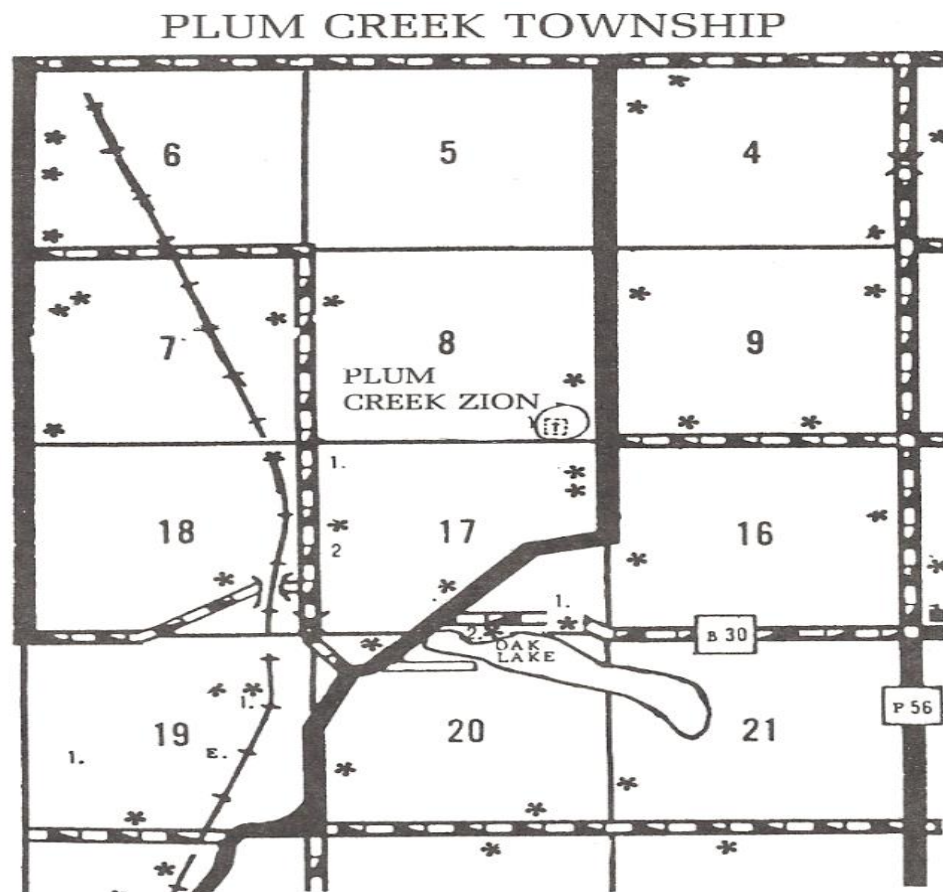
The school was a one story building attached behind the church where confirmation class was also held. There were about 12 pupils enrolled at the time of its closing in 1913. Rudy Willrett walked across the creek on stilts every morning to reach school.

When the congregation was dissolved, the parsonage was moved to Burt and the Church to Algona. Rudy Willrett followed the moving in September 1916 of the church on his pony.

The old cemetery, owned jointly by St. John's and Trinity containing approximately 3 acres marks the spot where the rural Zion Lutheran Church once stood in Plum Creek Township at Range 2836, Section No. 8.

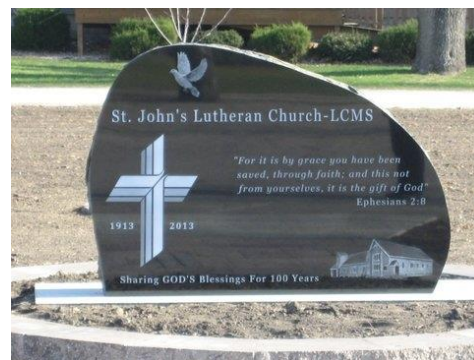
A number of regulations were established for "God's Field" in June 1891 including that only true Lutherans and a few exceptions could be buried in the cemetery. Children under the age of seven (7) years could be buried there if their parents were not members of a church. A separate section of the

burial grounds would be set aside for those who were banned from the church or committed suicide. A person given death bed repentance would be allowed a regular funeral and internment. Currently there are 35 headstones in the cemetery. Family names include Riedel, Leeck, Krueger and Bohn. The burials took place between 1890 and 1931.



## HISTORY OF ST. JOHN'S LUTHERAN CHURCH OF BURT, IOWA

**1912:** In March in the year 1912, Rev. C. G. Treskow of Plum Creek Zion was asked to preach to some Lutherans who lived in and around Burt. Permission was given by the congregation for the Pastor, under the condition that the morning services were not changed. Church was first held in Burt in the theater building on May 9, 1912.



Consequently the people in Burt rented the Presbyterian Church in Burt for Sunday afternoon with regular attendance of 25-30. The rent was \$1.00 per Sunday in the summer and \$1.50 per Sunday in the winter.

**1913:** The congregation was organized as the Evangelical Lutheran St John's Congregation Unaltered Augsburg Confession in Burt, Kossuth County Iowa.

The organization of the present St. John's Lutheran Church took place in January 1, 1913, when a constitution was adopted and signed by the following members: William Koestler, Adolf Koestler, Emil Leeck, Adam Heerdt, Otto Laabs, August Bollinger and several months later by Ed Bierstedt. William Koestler was first trustee and elder and Adam Heerdt was the first treasurer. During the year joined Ed Bierstedt after receiving a friendly recommendation from the congregation at Lotts Creek.



### St John's Lutheran Church Congregational Bylaws – 1912

Translated from German to English by Ruth Smith in 1998.

#### 1. Introduction

Since according to God's word, Cor. 14-40, in every Christian Congregation, everything should be honest and orderly, so have we, several German Lutherans, living in this town (Burt, Iowa) and surrounding areas, decided to form a Congregation and put down in this document, signed by us, the order under which we will stand as a congregation and administer all internal and external business of the Congregation.

#### 2. Name

This congregation shall have the name German Evangelical Lutheran St John's Congregation, unchanged Augsburg Confession in Burt, Kossuth County Iowa.

#### 3. Confession of Faith

Since our congregation is teaching and preaching as an Evangelical Lutheran one is and always shall be, we confess without exceptions, to all canonical writings of the old and new testament as Gods' true and wholly inspired word and to all the symbolic books of the Evangelical Lutheran Church as the rule taken from the Word of God, after which the teachings in our congregation



shall be lead and all differences shall be decided and resolved by the rules contained in the Book of Concord from 1580, specifically the main symbols of the Christian Church “Unchanged Augsburg Confession”, its apology the Small Smalcald Articles, Dr Luther’s small and large Catechism and the Formula of Concord.

4. Membership

Members of the congregation can only be those who:

1. Are baptized.
2. Confess and believe unconditionally the old and new testament to be god’s word and use it as rule and guide for a godly life.
3. Know at least the small catechism and confess it from the heart.
4. Does not live of the flesh, (Gal. 5, 19-21) but he leads a Christian life.
5. We will partake of communion often, if he is an adult
6. Is not a member of a secret sect; or keep company with a group whose believes are not in accordance with the holy word.
7. Willingly obeys the teachings of the congregation.
8. Is willing if he strays to be corrected according to Matthew 18, 15-17.

5. Vote

The right to vote has only those members who are male, and over 21 years of age and who signed the Congregational Bylaws.

6. New Members

Whoever from the community would like to become a member has to make an appointment with the pastor of the congregation to be examined by him regarding his faith. The Pastor shall take the request by the prospective member to the Elders and if they have no doubts it shall be brought before the congregation who shall vote on the membership. Anyone who comes from a sister congregation, with good recommendations shall be admitted immediately.

7. Contributions

Every member is obligated to pay according to his income and wealth toward the upkeep of the church, the school and toward paying off any debts the congregation may have. Whoever cannot meet this obligation shall come before the officers with an explanation or to excuse himself.

8. Disqualification

Those who after God’s Word ( Math. 18) because he is unrepentant, has to be excluded or on his own free will leaves, or moves away, will lose all rights to membership in the congregation.

9. Property Rights in case of Separation

Should what God in his wisdom shall prevent, in the congregation a separation occur the property of the congregation and all rights that go with it, will go to the one who upholds these rules.

**1914:** John Zimmerman became a new member; he came with recommendations for the Lotts Creek congregation. Ed Bierstedt was voted Deacon, William Koestler and Adam Heerdt, Trustees and Adam Heerdt, Treasurer.

The congregation realized if they are to grow, a church has to be built or bought. The old Church of our sister congregation in Fenton, Iowa is available for \$500. But before the congregation agreed to this purchase, it was decided to make the congregation at Plum Creek the following offer: to ask the congregation at Plum Creek to move to Burt with their Church buildings and to form one congregation with us. We promise to pay all expenses which are due to the move.

**1915:** Mr. William Koestler reported that the congregation at Plum Creek rejected our proposal. It was decided to purchase the small church, 24' x 36', from the Fenton Lutheran Church at a cost of \$500 and moved to Burt. It was also decided to purchase a suitable piece of property south of the town. The organist for services was pastor Treskow's young son Frantz, 13 years of age.

Pastor received a call to Hawarden, Iowa. It was decided not to let the Pastor go. Election results were: Elders Ed Bierstedt and Gottlieb Bleich, 1 year. Trustees: 1 year – William Koestler, 2 years- Ed Bierstedt and 3 years- Adam Heerdt.

Other Decisions reached: 1. we reorganize under the name of Evangelical Lutheran St John's Church, U.A.C. Burt, Iowa, Kossuth County. 2. A stone foundation shall be built under the church and under parsonage. 3. The Church and Parsonage shall face North and South. 4. A hot air furnace shall be purchased for the church. 5. The Trustees are in charge of all the building. 6. Thank the members who came to us from the Plum Creek congregation, for the gift of the Parsonage. 7. Borrow \$1,500 from the church funds. The first payment of \$150 was due on December 1, 1915. 8. Give the carpentry work to Mr. Oscar Anderson. 9. Ask the Synod for help.

When the Plum Creek congregation was dissolved, its property was divided between the Algona and Burt congregations, the former receiving the church and the later the parsonage, which was dismantled. The lumber was used in the erection of a parsonage in Burt, which was used as an educational facility in later years.

New members accepted into the congregation: Mr. Gerhard Gerhand, Mr. William Heerdt, Mr. William Bleich Sr., Mr. Gottlieb Bleich, Mr. Otto Falk, Mr. Carl Krueger, Mr. William Krueger, and Mr. Reinhold Bleich.

It was voted to accept the recommendations of the trustees, that the mortgage of the "Church Extension Fund" be taken so, that Church and Parsonage are one against lots 14, 15 and 16. It was decided to pay \$150 on September 1 of every year toward the building fund and also to offer the congregation at Plum Creek the pump and water pipes for \$15.00.

It was decided to sing the Liturgy during Church Services and during Communion. Further to start Church Services during the winter months at 10:30 and during the summer months at 10:00. It was decided to pass a list to members for pledges toward the payment of debts. Mr. William Doege was accepted as a voting member. Also it was decided to have a Christmas Celebration with children. Mr. William Koestler was elected to collect toward these expensed. Chosen to be janitor was Mr. John Zimmerman.

At a later meeting in the year, it was decided to change the singing of the Liturgy as follows, the Pastor will speak the Liturgy and congregation will sing it, however during the Communion all sing the Liturgy.

**1916:** The following resolutions were recommended: 1. The Trustees borrow from private persons or from the bank so much money that all congregational debts can be paid. 2. That a collection plate be put out during the Communion Service for the Confirmation class and the Pastor shall receive the collection. 3. That each member pays the organist \$.50 per year for his service. 4. That four collections a year shall be taken for outside need, specifically on Easter Pentecost, Thanksgiving and Christmas. 5. That the chancel and alter be repaired

Mr. John Zimmerman offered to do the janitor duties for free, per which the congregation thanked him by standing.

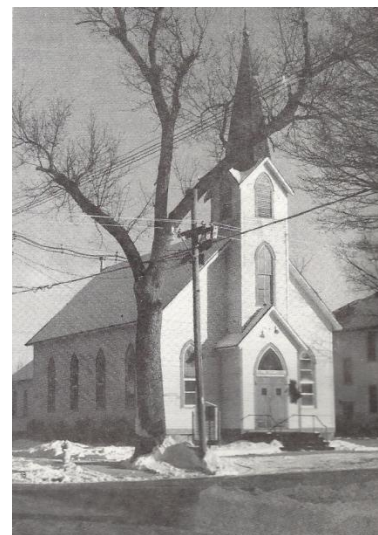
Recommended and decided on: 1. that we lay a sidewalk. 2. That gutters be put on the Parsonage. 3. That a Cistern be built. 4. A wagon shed shall be built. Mr. Vogel offered to deliver the cement for the Cistern without cost.

Mr. George Koestler Sr. was admitted into the congregation as a voting member. It was decided that we will have a Mission Festival and that we will invite the congregations at Lotts Creek and Bancroft.

It was decided to ask the Pastors Mr. Furstman, Lotts Creek and E. Grumman, Spencer, Iowa as guest speakers for the Mission Festival. We will thank Mr. Huenheld for the garden work he has done here. It was decided to send a letter to the Synod to ask for further help.

It was decided that our congregation shall participate in the Jubilee with congregations of Kossuth County, in honor of the 400<sup>th</sup> anniversary of the Church Reformation.

On New Year's Day the annual meeting was held with financial reports for the year of 1915 approved. The report of the treasurer showed that total collections were \$48.23, expenses of \$43.20, leaving a balance of \$5.03. The annual report also showed that \$36.50 was still due Pastor Treskow of his \$175 yearly salary. This was the last year in which confirmation instruction were conducted in German.



Zion Lutheran Church, Plum Creek Township, erected in 1892, moved to Algona in 1916. It served as house of worship for Trinity until 1951.

**1917:** The following we accepted as new members into our congregation: Mr. Gustan Bunkofske and George Koestler Sr. The Treasurer report showed that the total debt of the congregation is \$1,859.77. At year's end we had \$32.23 on Hand.

Pastor was given permission to preach at the Mission Festival at Lake Park and Estherville. It was also decided to have a Mission Festival for our congregation. It was decided that every member contributes \$15.00 toward the payment of debts.

Jacob Koestler has asked for membership in the congregation. August Mueller became a voting member of the congregation. Pastor Stephan will be allowed to come with his Luther Program. The Synod again will be asked to help with Pastor's salary in the amount of \$200.00.

Minor building improvements continues with the inside painting and wallpapering of the parsonage and church and graveling the street.

**1918:** The Synod was asked to pay what was needed instead of \$200 originally considered along with the money owed William Doege. Income \$256.00 and Expenses \$150.00. Franz Treskow continues as janitor.

Every other Sunday the church service shall be in English. The parsonage will be painted and \$50.00 was collected to purchase Liberty Bonds. It was decided to have the money due on September 1<sup>st</sup> shall be collected in the same manner as last year. Jacob Koestler, Heinrich Wiener and Mike Zimmerman were accepted into our congregation as voting members.

**1919:** From the annual report of 1918 presented on January 1<sup>st</sup>, showed that total collections from all sources totaled \$613.35. Some of the disbursements were: Telephone rent - \$12, Light bill - \$9, Payment on church debt - \$200, Insurance - \$5.05, Coal - \$11.60. New balance to bring the New Year was \$46.04.

Hans Koestler and Mr. Irena Wiese were accepted as a voting member. Pastor Treskow received a call to Lacona, Iowa. It was decided not to let him go. Pastor Treskow received a call from Eldora, Iowa, and was allowed to go peacefully after the confirmation class was confirmed on May 15<sup>th</sup>. A list of suggested Pastors was received from the synod. Pastor Seltz from Aryshire accepted the call and will be installed August 31<sup>st</sup>.

It was decided to have three Sundays in German and one Sunday in English with communion twice during the month. Water pipes will be installed in the parsonage. A mission festival was approved.

**1920:** The treasurer report showed a beginning balance on hand of \$172.25. It was decided to have two German and two English communion services during the year. Envelopes were given to each communicant voting member in the congregation to collect the Pastors monthly salary. Pastor Seltz, August Berman, August Schipull, Ed Weiske, and A. J. Dettmann were accepted as a voting member. The three Elders shall also serve as Trustees and serve a term of three years. The Chairman and Secretary will be voted on for one year.

The recommendation to have the Church services half in German and half in English was tabled. Pastor Seltz was given permission to purchase material for the sidewalk south from the house and paint for the bathroom. It was decided to paper the inside of the Church. A Mission Festival will be held on the first Sunday in September.

It was decided to do a collection for the needy in Germany, and ask the synod for \$250 for Pastor's Salary. It was also decided to only let the voting members vote instead of all Communion members on how often we should reach German and how often English.

Information from the annual report showed that a total of \$48.25 was collected for the purchase of Liberty Bonds. Payment on the church debt continued with another \$200 payment.

**1921:** Mr. Herman Bleich was accepted as a new member. \$40 was allowed for the services of the janitor and organist. It was decided to pay the Pastor salary ourselves from now on. During the next meeting of the Synod our congregation will officially join the Synod. The Improved constitution was read. St. John's became self-supporting and a voting member of Missouri Synod.

Pastor received a call from a congregation near Adair. The congregation unanimously voted not to let the Pastor go. Each member will pay \$5.00 to pay for the sewer system assessment.

Ladies Aid was organized with 21 members. First officers were: President- Mrs. G. Gerhard, Vice President - Mrs. George Koestler, Secretary - Mrs. M Seltz, Assistant Secretary- Mrs. E Bierstedt, and Treasurer- Mrs. W. Koestler. Meetings were held every two weeks in the home of its members.

In mid-1921, there was discussion concerning the formation of a Christian Day School in which the pastor would be the instructor for all grades and classes. A discussion to proceed at this time was delayed until the following year. A discussion concerning the use of both English and German languages in services was held.

**1922:** In the four collections and the Mission Fest about \$250 was raised for Synod work and Missions. Each member will again be asked to pay \$5.00 for the sewers. No services were held on June 11<sup>th</sup> and June 25<sup>th</sup> since Pastor will be preaching at Mission Fests in Terrill and Elmore. Our Mission Fest shall be July 9<sup>th</sup> with Pastors P. Fiene and Dubbe preaching.

The Pentecost Sunday Church service will be held in the evening instead of the morning. A special collection was taken for the purpose of setting up a new seminary in St. Louis, Missouri.

**1923:** Minutes will now be taken in English from now on. The congregation feels obligated to protest against the religion classes in the public school.

The new English Constitution was distributed for study and later discussion and acceptance. A mission festival was held July 22 with Rev.'s Braner and Fiene preaching the sermons. "Several members are to be notified that if they do not attend services and our meetings they will be dealt with."

**1924:** New English constitution was adopted. Treasurer was directed to collect \$10.00 from each member to cancel debt at bank (\$200.00 was due). Resolution of thanks was made to Ladies Aid for purchasing paint and to Pastor for applying it to the parsonage. Pastor Seltz withdrew request for release. Total expenses for year were \$1,145.93.

**1925:** Decided to try Duplex Envelope system to collect our offerings. Pastor's salary for 1925 was \$1200 a year. Motion passed to have English evening services when the morning service was in German.

**1926:** Resolution passed to have the celebration of the Lord's Supper six times a year instead of the present four. The time of the evening services were changed from 7:30 to 8 pm. Miss Viola Bleich was chosen as organist. The first Sunday in January was the date set for the annual meetings of the church. The trustees were instructed to receive bids and find out the cost of connecting the parsonage with sewer and water. A \$5.00 per member assessment was made to complete this project.

**1927:** Pastor Seltz accepted a call to Atlantic, Iowa in October. A call was sent to Rev. Louis Richmann of Iowa Falls; Rev. Dubbe acted as vacancy pastor. Congregation numbered 130 communicants. Total expenses were \$2366.

**1928:** Mission festival to be held in June. Janitor hired for \$5.00 per month. Organist is to be paid \$35.00 per year. Motion carried to have English services every Sunday and German and English services every other Sunday. Congregation voted to build a chicken house and fence. Voter approval was given to try a parish paper for a few months.

**1929:** Total Budget \$2400. Mission festival scheduled for June 9. Pastor is to organize a Sunday school program. Vote 16-1 to build new church. Committee formed to gather information, make suggestions and tentative plans for an enlarged church building and get estimates of costs. Building committee consisted of G.W. Bleich, Geo. Koestler, H. Ewoldt, R.A. Bleich and O. A. Laabs.

During demolition of old church and construction of the new, services were held in the Burt Theater. Basement was dug by hand and horse drawn scrapers. Much congregational help involved.

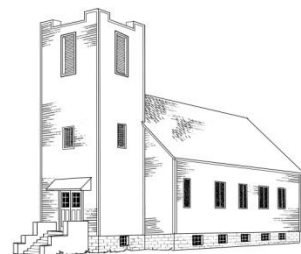
June 20, 1929-Last service in old church

July 9, 1929- Excavation began with F. Lavrenz

July 8, 1929 -Cornerstone laying

November 11, 1929- Dedication

Ladies Aid purchased two outside windows above alter. Mason work by Norman Brothers of Algona. General contractors were Lipper Brothers of Boone, IA. Dedication week services induced: Opening service in English, followed by full German service in morning, afternoon and evening in English. Tuesday and Thursday evening services were in English. At the time of dedication there were 288 baptized members.



**1930:** Annual Report showed the cost of the new church was \$14,268.63. Janitor was to receive \$100 per year for services. Decided to combine German and English communion; Lenten services to be all in English on Thursdays. New Order of Service was permanently adopted after trial period. Congregation voted to purchase duplicator machine for reports and programs Sunday school picnic to be held in August. Mission Festival was held on May 25<sup>th</sup> with messages delivered by Rev. Leckband and Rev. Schmidt.

**1931:** Finance Committee to issue quarterly statements to all members. \$5.00 per month was allowed for the printing of the Messenger. Trustees were to get and estimate to enclose the parsonage porch. Total receipts \$2,196. There are 261 members, 40 voting members. Permission was granted for YPS to join Walther League. Christ statue on alter donated by Bleich family.

**1932:** Decided to reduce the number of German series. Double series will be held only on the first Sunday of the month, English only on all other Sundays. It was recommended to the ladies of the congregation that they elect a committee from their midst which will see to it that once or twice a year the church to given a thorough cleaning.

**1933:** Pastor offered a salary reduction of \$125.00 for 1932. The receiver of the closed First National Bank gave some explanations regarding our building loan. Pastor's salary was \$1,042.66. There were 24 enrolled in Saturday School and 52 in Sunday school.

**1934:** Decision to canvas the congregation on subscriptions to "Lutheran Witness". It was left to the judgment of Pastor and treasurer what percentage of our monthly income is to be remitted for syndical purposes.

**1935:** Pastor voluntarily accepted a 10% salary deduction from 1934. Average Sunday service attendance for October was 102. Bulletin rack constructed to save the expense of mailing them. Ten cents per family was to be collected for construction costs. Painting of the church was postponed until next year. Every family was asked to contribute \$3.00 towards the cost of enclosing the parsonage porch.

**1936:** No services held 2 Sundays in February due to storms and fuel shortages. Ladies Aid: answer roll call with bible passage adopted. 247 baptized members. A shortage of \$17.31 in the treasury was made up by those members attending the annual January meeting. Mr. Fred Carter was asked to paint the church.

**1937:** Synods new pension plan was discussed. New ways and means to be developed to raise monies for the church debt.

**1938:** The 25<sup>th</sup> anniversary of the congregation was celebrated the third Sunday in June. Pastors for the day were Rev. M.E. Seltz of Atlantic, Iowa and Rev. E.J. Otto of West Bend, Iowa. Plans were made for a special contribution to be used to wipe out the entire local church debt. Voters approved a small rental fee for the use of chairs, tables and dishes.

Official acts for the 1<sup>st</sup> 25 years were:

Baptisms – 207

Confirmations -166

Marriages – 58

Burials – 44

Saturday and Sunday school Enrollment – 58

Ladies Aid membership – 21

Walther League membership – 27

**1939:** Decided to drop the German language from our series. "God's Acre Plan" discussed with no decision at the time. A special 10<sup>th</sup> anniversary celebration of the new church will be on November 5<sup>th</sup>.

**1940:** Motion approved to allow \$15.00 per year for repair and upkeep of the parsonage. It was decided to buy screens for windows on parsonage porch. Permission was given for pastor to act as Chaplin at Camp Okoboji for one week during July.

**1941:** Introduced the "New Lutheran hymnal". The amount of 75 cents per family was to be collected for church cleaning. Average church attendance for September was 105.

**1942:** Church debt still stood at \$100.00. Pastor's salary was raised 20% to \$1440 per year. Organist was to be paid \$35.00 per year. Because of present financial conditions, it was deemed advisable to fill the coal bin as soon as possible.

A special Thanksgiving service is to be held April 26<sup>th</sup> commemorating the canceling of our church debt. Trustees were instructed to inquire as to the cost of cement floor in the hen house.

"New Lutheran Hymnals" were dedicated.

**1943:** Janitors salary was increased to \$120.00 per year. By majority vote it was decided that in our communion services, we abandoned the custom of men first and then the women, and that instead family groups or the persons occupying the same pew approach the altar together under the guidance of the ushers.

Total receipts for the year were \$2,828.33. Collection of old clothes, furniture, books and games were sent to prison camp. New communion rail purchased.

**1944:** Treasurer reported a balance on hand of \$700.00. \$528.00 was to be invested in Series F War Bonds and set up a service men's and woman's memorial funds. Church bulletins were to be issued every two weeks. It was suggested that help be furnished to the pastor in Saturday School.

Motion to pay the pastor's back salary for the depression years (32-33-34) was approved. It was decided to pay the pastor a \$100.00 bonus for 1944.

V-Day Services, after fighting in Europe ceases, is to be held immediately, either at 10:30 am or 2:30 pm or 8:00 pm. Pastor Richmann was released to a call in Minnesota. Pastor Loesch acted as vacancy pastor. Call sent to new pastor for \$1800 per year. Total receipts for year were \$4,029.21.

**1945:** Rev. Ferdinand Reith was installed on January 28, 1945 as our 4<sup>th</sup> Pastor. Mrs. Wilfred Radig was selected as substitute organist. Decided to have a Service men's committee, whose duty it shall be to assist the returning servicemen.

The Legal deed was drawn for Plum Creek cemetery. Proposed to purchase plot of ground adjoin the church property on the east for \$300.00.

PFC Joel Carter was killed on Iwo Jima.



**1946:** Church assembly passed resolution encouraging young people to attend Bible classes four years after confirmation. Suggestion to purchase of pipe organ as a memorial for our men who service in the armed forces was tabled. Total receipts were \$5,935.00.

**1947:** Work at Plum Creek paid for at rate of \$1.00 per hour. A \$20.00 donation was made from the congregation for the proposed chapel at Okoboji. Ladies Aid joined Lutheran Women's missionary league. Decided to drop series June 29<sup>th</sup> to enable the congregation to attend circuit centennial in Algona.

**1948:** Insurance coverage on the church and its contents was \$22,500.00 and \$5,000 on the parsonage. Pastor suggested that a card system be introduced for communion registration. Cards would be placed in hymnal racks. Members desiring to receive communion the following Sunday would write their names on the cards and after service hand the card to the pastor. The decision to install a public address system was approved. The pastor was granted an increase of \$25.00 per month in salary. Total receipts for the year were \$7,382.99.

**1949:** The suggestion to bring the reed organ from the balcony to the front of the church was dropped. Purchase of pipe organ was also dropped. Pastor was granted permission to conduct Vacation Bible School. Voters approved to give Walther League a picture machine. In October Pastor Reith was released to California, MO. Pastor Loesch acted as vacancy pastor.

**1950:** All "junior" boys are to act as ushers. The call to the new pastor will be \$200.00 per month plus \$50.00 per month car expense and moving expenses. Pastor Wittkopp installed on June 11, 1950.

**1951:** A sidewalk was constructed on the west side of the church. Organ Committee of Rev. Wittkopp, W. Radig, R. Lavrenz and R. Peter suggested that the church purchase an organ with chimes and echo that will be placed in the front of the church. Total receipts for the year \$11,910.08.

**1952:** Mr. Boettcher's building was used for Vacation Bible School. The dedication of the new organ will be July 27<sup>th</sup> with an organ recital on Aug. 10<sup>th</sup>.

**1953:** A visiting pastor recommended giving awards to cut down on Sunday school absenteeism, also suggested that we consider building suitable quarters for Sunday school. There was overwhelming voter approval for "Acre of Corn for Christ". These funds are to be used for an educational building.

**1954:** This is the 2th anniversary of our present church building. Rev. Richmann presented the afternoon message. A building study committee was formed consisting of Eugene Drager, Martin Meyer, Bob Schmidt and Rev. Wittkopp. There were 336 baptized members consisting of 98 families.

**1955:** A water heater was placed in church basement by men's Club. A thank you was issued to Cliff Holding and Kenneth Cook for their help with "Acres for Christ". A new typewriter was purchased for \$87.13.

**1956:** Blueprints for church addition to be obtained from Mr. Wibben of Algona, then the plans to be shown to congregation, then two weeks later a letter to each voting member whether to build or not. By an 18-6 ballot, a new church addition will be built. Rev. Wittkopp released to Marcus, Iowa. Interim Pastor Peter Braner serviced St. John's.

**1957:** Procedures to secure new pastor continued. VBS will be dropped until pastor arrives. It was decided not to allow Walther league to hold square dance at zone party. Pastor Arthur Schultz was installed on November 28, 1957.

**1958:** Motion to drop all previous building plans and start over. A committee was made to find cost of raising, turning and moving the church and digging a new basement. Permission granted Pastor Schultz to investigate the possibilities for mission work in Armstrong and Swea City area. Farmers wishing to give corn should shell and deliver to elevator and have check made out to St. John's.

**1959:** Permission granted that Rev. Schultz partake of the Lord's Supper with the congregation and that it be administered by an elder. Pastor granted permission to work one day per week at Armstrong. The building goal was set at \$80,000. There were 71 children enrolled in Bible School this year.

**1960:** Permission was granted for Men's Club to make recreation area out of alfalfa field, south of the church. Trustees advised to see the mayor about our amplifier in the balcony and the playing of chimes.

**1961:** The total budget was \$14,000. Ladies Aid celebrated their 40<sup>th</sup> anniversary. Pastor Schultz released to Red Oak, Iowa. The vacancy Pastor will be Rev. Vehling. A schedule of double Lenten services was arranged, one at 4 pm and the 2<sup>nd</sup> at 8 pm. The presentation by representatives of the Church Extension Fund told that these funds are loaned to mission congregations. Presenters stressed importance of members investing their savings in this fund. A request was denied for the sale of some of our property. Board of Education reported that 10 persons were enrolled in teacher training course at this time.

**1962:** Rev. Wm Scheer installed as the 7<sup>th</sup> pastor of St. Johns. A revised constitution was adopted. The decision to move Religion School classes from Saturday mornings to Wednesday evenings from 6-8 pm was approved.

**1963:** There were 334 baptized members of 103 families, with Sunday school enrollment of 68. Our mission goal was \$5700. Motion was approved to ask for free will donations for the Swea City Church project. New building committee was appointed: R. Bierstedt, E. Lavrenz., M. Wiegand, E. Meyer, G. Koestler, E. Smith and H. Batt. The committee was once again authorized to contact contractors interested in remodeling the front entry. Unanimous vote to accept remodeling plan submitted by Mr. Wibben. Rudy Peter was appointed Building Fund Treasurer. Ground was broken for new entry and remodeled basement on August 1, 1963.

**1964:** This year we celebrated our 50<sup>th</sup> anniversary with rededication. Two former pastors returned to give messages. Rev. E. L. Wittkopp of Marcus preached in the morning and Rev. Arthur Schultz preached in the afternoon total attendance of the day was 563.



**1965:** Pastor to purchase a new typewriter of choice, as long as it wasn't electric. \$100.00 was pledged to the Home Finding Society. A Bid of \$500.00 was accepted for the former office house to be removed from the lot. The balance of the building fund was transferred to the memorial fund. A supper of appreciation was held for the Ray Lavrenz family as they were leaving the community. Started using communion cards the same day as communion rather than having to request communion prior to that date.

**1966:** Individual communion approved. Pastor Scheer was released to accept calling Wisconsin. Pastor Vehling will act as vacancy pastor. No VBS in 1966. Dual Parish agreement approved with Our Savior's Lutheran of Swea City. The average church attendance for May was 146 and June was 168.

**1967:** The total budget was \$17,956. Installation and congregation reception for Rev. Edwin Bishop was held on August 14, 1967. Volunteer office help was requested. Concordia retirement and Welfare Plan was accepted.

**1968:** Accumulated memorial funds were used to purchase new lights for the church at costs of \$2700. A new sound system cabinet was to be constructed at the rear of the church at a cost not to exceed \$100. New communion pads were purchased for \$145.00. Permanent memorial book and altar linens were to be purchased from Corn Cash funds. There were 83 students enrolled in Sunday school. There are 45 in Religion School.

**1969:** The parsonage was rewired and carpeting was installed in the entry of the church. A Corn Cash goal was set at \$3500.

**1970:** 146 new hymnals are now in use. The old garage was sold for \$50 and committee formed to plan the construction of a new structure.

**1971:** Elders reported that the Matins Service will be used on the 3<sup>rd</sup> Sunday of the month. The wind break for the church entry was constructed. Basketball hoops were installed at the rear of the church. Rev. Edwin Bishop accepted a call to Indiana. Rev. Otto will serve as vacancy pastor.

**1972:** A separate bank account will be set up for house in Bancroft. Installation service for Rev. David Tews was held May 21, 1972. Discussion was held on having communion twice a month. A Mission Festival was held in September with Arthur Newhouse as guest speaker. Motion to join fellowship breakfast during the winter months was approved. Ladies Aid purchased tape recorder to record sermons for shut-ins.

**1973:** Chancel area and aisles were carpeted from a generous anonymous donation. A parcel of land S. E. of parsonage was sold. Vacation Bible School was held jointly with Swea City in Burt.

**1974:** A proposed constitutional amendment would allow members of the church over the age of 18 years to be voting members. With the cost being almost equal to rebuild and pad old pews, the decision was made to place an order for new pews that were installed in August. A church picnic was held Aug. 28<sup>th</sup> at Union slough.

**1975:** A committee was established to consider the possible purchase of a new organ. Members included were: E. Radig, K. Bierstedt, R. Peter, W. Christensen and B. Skadburg. Insurance rates were increased to \$100,000: Church, \$15,000; contests, \$15.00; parsonage, \$5,000 garage. Pastor Tews was to get more information concerning Vietnam refugee resettlement in this community. Ceiling fans were purchased by Ladies Aid with the congregation to pay for installation.

**1976:** All undesignated memorials at this time were placed in the organ fund. Community Lenten Lunches were first organized. Community Bi-Centennial service was held on July 10<sup>th</sup>. Motion approved to have individual communion on the 3<sup>rd</sup> Sunday of each month. Common Cup will continue to be used on the 1<sup>st</sup> Sunday of the month and festivals. Mission Sunday was October 24<sup>th</sup> the Rev. Gerike.

**1977:** New rules are to be drawn up by the Ladies Aid for the use of basement and equipment. New organ was purchased. Pastor Tews accepted call to Wisconsin in November. Vacancy pastor was G.J.C. Gerike.

**1978:** Pastor Aryln Sturtz was installed on March 12<sup>th</sup>. Voter approval was given to start a fund for the purchase of a new piano. Burt Days (Pre-Centennial) were observed with community outdoor service on Aug. 27<sup>th</sup>. Decided to use parts of "The Lutheran Book of Worship" in coming months and decide at a later date in the congregation wishes to use this book. Later on this year an order was place for 174 of the new hymnals.

**1979:** Since the pastor has purchased his own home, the former parsonage will now be used for an education facility. A new piano was purchased and choir acquired new robes. The cost to refinish the Christ Statue on the altar was absorbed by Ladies Aid.

**1980:** Home receipts for the year were \$35,676. A decision was made to retain our old hymnals in storage. Interest from an expiring certificate of deposit was to be reinvested. "Forward in Remembrance" program started.

**1981:** Members of the Scheer family presented a puppet show in the fall. St. John's sponsored a float in Burt's Centennial parade held in July. This year marks the 60<sup>th</sup> Anniversary of ladies Aid.

**1982:** An AAL donation was used to fund the building of a closet in the balcony. A fund drive was started for the purchase of new communion rails. The joint parish agreement with Swea City was dissolved.

**1983:** Pastor Sturtz serves as vacancy pastor to Trinity Lutheran in Algona. LYF sponsored many fund raisers to be able to attend a national youth conference in Texas.

**1984:** New doors for the east entry and new furnaces were purchased. A tornado struck the Burt community in June causing major damage to many homes, business and schools. There were no serious personal injuries caused by the storm. It wasn't until several months later that any structural damage was detected at St. John's church – some cracked walls had to be replastered and repainted. Pastor Sturtz's home received minor damage.

**1985:** Average attendance for the last three years was 173 per Sunday. Pastor Aryln Sturtz was released in order to continue his education in St. Louis. Rev. Dehnke will serve as vacancy pastor. A seminary candidate will be called to serve St. Johns. Pastor Jeffrey H. Pulse was installed on August 25<sup>th</sup>. The LYF group organized many fund raisers to be able to attend a youth rally in Washington D. C. to be held in 1986.

**1986:** Approval was given to Pastor Pulse to act as vacancy pastor at St. John's of Fenton and to act as Devotional leader at Youth Week at Camp Okoboji in July. A building committee of J. Koestler, L. Bierstedt, D. Madsen, J. Wiener, and D. Peter was appointed to look into the possibility of enclosing the east steps and creating additional space. New district program "His Love- Our Response" designated to increase member involvement was approved. Pastor Pulse suggested a carnival or auction as part of congregational fellowship. A committee of D. Peter, R. Road and J. Trunkhill was appointed to establish guidelines for qualifications of scholarship program for student of our congregation attending synodical colleges.



Pastor Jeffrey and Sara Pulse

**1987:** A meeting was held in February to start planning for the church carnival. Attendance at Adult Bible Study had increased 50% since the start of the "His Love-Our Response" services Building committee continues to investigate remodeling/addition possibilities. \$4,778.09 net receipts from carnival/auction to be divided equally between camp Okoboji and St. John's building fund. The theme "75 Years – One Foundation" was given voter approval. Special services will be held in January, June and November. Mary Shipler will act as chairperson for the anniversary activities.

**1988:** Plans are complete for our 75<sup>th</sup> Anniversary. Building committee has employed services of Allers and Associates, architects to prepare plans for future addition to our church.



On June 28<sup>th</sup>, the Parish house was torn down to make room for the new addition. On July 3<sup>rd</sup>, Pastor Pulse's office was moved to Lilly Bleich's garage for the duration of the construction. On December 11<sup>th</sup>, the new addition was dedicated by Pastor Kapfer, President of Iowa District West.

At the beginning of our 75<sup>th</sup> year we have 315 members including 256 communicants. Average church attendance for 1987 was 149 per service.



New programs started included Evening LWML, greeter program, and every member visit. A carnival/auction was held for the second year. \$500 was giving to Camp Okoboji and remainder put in Building fund from the proceeds.

**1989:** The third annual carnival/auction brought a donkey raffle along with it. A total of \$3,471 was raised with camp Okoboji receiving half of the proceeds. The church parking lot and landscaping was the church project that done with the other half. Projects completed this year included: shingling the old church, landscaping, parking lot completion, new office furniture, cabinets in workroom, new lights in old part of basement, floor tile in basement bathrooms, carpeting in new basement and west entry way, bulletin boards in each Sunday school room, and a new copier.



**1990:** Every member visit was attempted again. The annual Carnival was held with a hog and beef roast held instead of the auction, with proceeds going to renovation of the sound system and Camp Okoboji building Fund. Other projects completed included: footings for the new Outdoor Worship Center, repair of our stain glass windows in the Sanctuary, shingled the old part of the Church. Purchased new blue hymnals-Missouri Synod, started a tree fund to beautify our church lawn, started offering Individual and Common Cup communion at every Communion Service. Started an Endowment Fund and Outreach for the Elderly L.I.F.E.



Sept 16, 1990  
Elizabeth Radig and Pastor Pulse  
at Elizabeth's 45<sup>th</sup> Anniversary  
St. John's church organist.

Tried a Talent Night for members of our church and hosted a team of young high school students who spend their summer as witnesses of God. The formation of a Social Ministry Board was done to oversee the many aspects of social ministry that the church is involved in.

It was decided to reorganize the Board system and review and update the church constitution. The organization of a filing system for congregational records needs to be done. A part-time church secretary will be hired to help the Pastor with the office work.



Rosann Shieler – Church Secretary

**1991:** Church attendance jumped by 15 people per Sunday and we ended up with 50% attendance for 1991. Membership increased by 13 to 331 baptized. A new record for the number of Baptisms in one year (9) was set. Our debt was cut in half, we owe \$6,200. We voted to purchase additional property.

An auction was held again this year along with the carnival and roast. This event was attended by 250 people and many enjoyed seeing Pastor Pulse in the dunk tank! The \$2,719.67 proceeds were once again split 50/50 between Camp Okoboji and this year's designated project of a new basement divider.

Projects completed this year included the renovation of the sound system, a new book cart, new bulletin boxes, purchased additional property, new NIV Bibles in Sunday School and Adult Bible Class, installed

new outdoor lighting in the front of the church and new cupboards and shelves in the secretary workroom.

**1992:** We had our highest Corn/Bean/Cash donation in our history: \$11,670; raised our mission commitment to \$11,250, church boards began meeting regularly, started a “Senor Saints” group, completed the Outdoor Worship Center. The total budget for the year was \$76,390.00

**1993:** This was the year that St. John’s was chosen as one of the 69 churches from our Synod to participate in the “Church Membership initiative”. It was the year we were featured in an article in the “AAL Correspondent Magazine. In the midst of a crop failure the congregation decided to apply for a DCE intern next summer. This small step of faith then mushroomed into a Partnership with our sister congregation in Swea City which includes a DCE intern and a Vicar. The congregation raised its mission commitment and then proceeded to increase their giving by over four thousand dollars. The average Sunday service attendance was 166 and average attendance at Sunday school was 23.

Russell Reimers was ordained into the office of the Holy Ministry on July 18, 1993 at St. John’s in Burt. Russell is the first son of our congregation at Burt to enter the fulltime ministry in the LCMS. He was installed as the Pastor at St. Paul’s Lutheran Church in Wilbert, Minnesota on August 8, 1993.

The annual receipts for 1993 were \$89,935.02, expenses \$88,912.60 leaving a balance of \$2,289.63.

**1994:** We finished the upstairs of the addition by adding three more class areas. The church was air conditioned; the garage was shingled and sided. The preschool reached its highest enrollment in history. The Sunday school enrollment grew from 45 to 69. We have 277 Communicants and 360 Baptized souls. We held our 1<sup>st</sup> annual Harvest fest on September 11, 1994.

The annual receipts for 1994 was \$109,118.74 and expenses were \$110,478.17 leaving a balance of \$930.20.



**1995:** The church spent nearly two-thirds of 1995 in Vacancy. We have 280 Communicants and 365 Baptized Souls. Lori Potratz came to St. John’s and Our Saviors as a shared intern and then became our Director of Christen Education. She left for a call to Osseo, MN.

Herb Keistman served as our Vicar, a first for our church.





On May 21<sup>st</sup>, retiring preschool teacher, Esther Christensen

was honored with a reception for her 6 year as a Preschool teacher.

Elisabeth Radig was honored for 50 years of faithful service to St. John's on September 17, 1995. Elisabeth first began playing the organ for German and English services at St. Paul's Lutheran Church in Lakota, IA at the age of 14. The first wedding she played for was that of Ray and Pearl Hertzke on August 16, 1936. She began playing the organ at St. John's in Burt in September 1945 when Evelyn Meyer went to college. During the past 50 years she has been the organist for 8 pastors: Rev. Ferdinand Reith, E. L. Wittkopp, Arthur Schultz, William Scheer, Edwin Bishop, David Tews, Arlyn Sturtz, Jeffrey H. Pulse and now Bryce Bereuter.

Installation Service for Pastor Bryce A. Bereuter was held at St. John's on October 22, 1995.

**1996:** Even though we fell short on the general Missions budget, attendance and giving remained steady, the carpet-project was completed, and the Corn-Bean-Cash contributions were the second highest in history of our church. Linda Peter has made some new banners for the church including the baptism banner – "Create in Me a Clean Heart"; confirmation banner – "Stand Firm"; Marriage banner – "Two Become One"; Funeral Banner – "Today with Me", Praise God From Whom All Blessings Flow; and Guardian Angel. This year's budget was \$80,155.00.

**1997:** Our mission awareness and involvement in mission projects has increased. The *Wells for Ghana* project was successful and the congregation is working on new endeavors such as 85 quilts in celebration of our 85<sup>th</sup> Anniversary. Sunday school and church times have been swapped. Our budget for the year was \$81,331.00. Our parking lot was tiled thanks to the help of many hard working laborers.



**1998:** New items within our church include an outside church sign, carillon & speakers, blacktopping of the parking lot, striping and cement barriers, child baptismal stool, library video shelves (made by Eugene Meyer), 2 kitchen stoves, and a kitchen cart.

**1999:** The year end report shows a membership of 300 communicants and 391 baptized souls. The average attendance for Sunday Services is 140. The average attendance for Sunday School is 17. A farewell reception was held on Sunday July 18<sup>th</sup> for Pastor Bryce, Natalie, Margaux and Anna Bereuter. The Kid's of the Kingdom Preschool celebrated their 10<sup>th</sup> Anniversary. The annual receipts totaled \$104,277.76; expenses totaled \$103,229.14 leaving an end of the year balance of \$7,112.39.

**2000:** Our total membership is 378 people of which 292 are communicants and 86 are baptized souls. Pastor Henry Friedrich is our interim Pastor. Blood pressure testing is offered the 2<sup>nd</sup> Sunday of the month by Laura Knoll, Parish nurse in the secretary's office after services. Cassette tapes of the Sunday morning worship services are available to shut-ins or other members of the church. Jack Trunkhill tapes the service, Ann Heyes makes copies and Julian Cherland delivers the tapes. Worship by phone is also available for some of the shut-ins. Johnny Parker services are keeping volunteers busy. The candelabras, vases and altar book have been replated. Punch locks were installed on the outside doors. Sensor lights have been placed on the garage.

On May 20<sup>th</sup>, Elisabeth Radig passed away. She had given 55 years of organ service to our church.

The 2000 annual report shows receipts of \$106,286.93 and expenses of \$98,072.37 leaving a balance of \$15,326.95

**2001:** Receipts for the year totaled \$126,091.73 and expenses \$139,638.18 leaving the ending balance for the church year at \$1,780.50. Church membership totaled 385, with 296 being communicants and 89 being baptized souls. With 62 children on our Sunday school roster, the average attendance is 20.

Jonathan Watt was Ordained and Installed into the office of Holy Ministry at St. John's Lutheran Church, Burt, IA on Sunday June 17, 2001. On June 10, a thank you reception was held for Rev. Henry and Evelyn Friedrich expressing appreciation for the time he as given to St. John's during the past two years as Interim Pastor from July 1999 to June 2001.

Planning began for the ABATE breakfast with Craig and Debra Steven being in charge of the committee. A grant was applied for by Pastor Watt to begin this outreach program. Pastor Randy Wilken was the guest speaker for our Mission Fest Sunday and also helped with some training on outreach programs.

Our stain glass windows were releaded and new symbols were added telling the story of Jesus. The windows were dedicated on November 11<sup>th</sup>, 2001. Duane Peter and Randy Reimers headed the project.

**2002:** Sunday Church service can be viewed on Channel 3 of the Burt local cable TV Monday evenings and Thursday mornings. Church night changed from Thursday evening to Wednesday evenings due to the school system changing their church night. An electric piano was purchased and placed in the church balcony.

A new devotional book was added to the church library from Pastor Jeffrey Pulse. His book is "The Children (Not the Adults!) of God". Church membership totaled 384 with 289 being communicants and 95 baptized souls. Average Sunday school attendance was 18.

Receipts for 2002 totaled \$124,150.06 and expenses were \$118,598.60 leaving a church balance of \$7,331.96.

**2003:** Membership totaled 388, of which 295 were communicants and 93 baptized souls. Enrollment in Sunday school is 42 with the average attendance being 15.

AAL and Lutheran Brotherhood joined together to become Thrivent for Lutherans. The congregational coordinators were Darrel Schmidt, Vern Koestler and Debra Steven. The ABATE breakfast was held again this year with many bikers returning from last year. Pastor Randy Wilken returned with some youth from East St. Louis to help with the Breakfast. Donations from the breakfast were split 50/50 with ABATE's Toys for Tots project and expenses for the next year's breakfast.

Receipts for the year totaled \$230,746.47 and expenses were \$227,212.19 leaving a balance of \$10,866.24.

**2004:** We have 298 Communicants, 91 Baptized Children totaling 389 total memberships. Average attendance for Sunday school is 22. St. John's Koinonia group has been active for almost 24 years.

Friendship Sunday was observed. Members were asked to make commitment to have lunch with their friends, the 1<sup>st</sup> with a friend they know, the 2<sup>nd</sup> with a member of St. John's you would like to know better, 3<sup>rd</sup> with a good friend who was not a member of St. John's and the 4<sup>th</sup> meal with someone who isn't a member of St. John's who you'd like to know. Then on Sunday June 27, a church service was held at the Burt Activity Complex and members were asked to invite a friend to this service.

Receipts for the year totaled \$124,785.76, expenses \$124,883.25 leaving a balance of \$9,143.77 for the year.

**2005:** Pastor Henry Friedrich served as Interim Pastor. Total membership was 368, 281 being communicants and 87 baptized souls. Average church attendance was 97 and average Sunday school attendance was 12. Enrollment for Kids of the Kingdom Preschool was 10.

LYF only had 3 active members (Mick Aaron, Brant Karels, and Mary Steven) but they took on the project of painting the parking spaces on the parking lot. Doris Steven stepped in and helped by painting the handicapped space free hand.

Friendship Sunday was held on April 3 at the Burt Complex. About 95 members and friends attended. July 2<sup>nd</sup> was the ABATE breakfast. Pastor Randy Wilken and members and youth of his congregation come from St. Louis inner City area to help serve again. Wendell Christensen Jr. and his family fixed the Pork Bacon Burgers and Jack Trunkhill and his kitchen crew prepared the scrambled eggs. In a meeting following the breakfast it was decided to end this project for our church. Funds remaining in this account were moved to the Mission board account to help with other outreach projects.

On Sunday October 16, there was a farewell dinner for Pastor Watt. Pastor Watt and family took a call to St. John's Lutheran Church at Howard, South Dakota.

Income for the year totaled \$140,448.76 and expense totaled \$134,544.06 leaving the church a balance of \$15,048.47.

**2006:** Average Sunday school attendance is 9 and average Sunday Service attendance is 90. The Evangelism Mission and Social Ministry Boards have been combined to be called the Mission Board. St.

John's Koinonia celebrated their 25<sup>th</sup> Anniversary. A miniature version of our church was built for a float for Burt's Quisquicentennial.

Rev. Jason Paul Peterson was installed at St John's on Sunday July 2, 2006. A special thank you breakfast was held in June to honor Pastor Henry Friedrich for filling in as our Interim Pastor again.

Concordia Seminary Sunday was celebrated on Sunday February 26<sup>th</sup> with guest speaker Dr. Brian Friedrich, President of Concordia University Seward, Nebraska. Dr. Brian Friedrich is the son of Pastor Henry and Evelyn Friedrich.

Mission Sunday was held on April 9<sup>th</sup> with Gary Thies from mission Central in Mapleton, Iowa as our guest speaker. Through Gary Thies, St. John's adopted Rev. James May and his wife Tina and family as our mission family. Pastor May and his family serve the people in Togo, West Africa.

Thrivent congregational coordinator Vern Koestler took a position on the County level. Jack Trunkhill has agreed to serve as a congregational coordinator along with Darrel Schmidt and Debra Steven.

Annual receipts totaled \$148,790.19 and expenses were \$131,389.00 leaving a balance of \$22,337.76. Membership totaled 369 with 285 being communicants and 84 baptized children.

**2007:** Membership totaled 332 with 269 being communicants and 63 baptized children. Average church attendance is 85 and average Sunday school attendance is 9. Annual receipts totaled \$123,338.81 and expenses \$131,117.24 leaving a balance of \$13,874.19.

**2008:** The country's economic circumstances were reflected in our financial status. During the fall and summer, we cashed in all of our investments that were available for the general budget, at the end of the year, the Share the Blessings gifts, combined with a generous gift from a member's estate provided enough funding to return us to a relatively stable financial position. Our beginning balance on 1-1-2008 was \$13,874.19. After receipts of \$190,424.52 and expenses of \$177,177.00 our balance at the end of the year was \$27,121.71.

The average attendance for 2008 for Sunday Services was 85 and for Sunday school was 9. Total membership was 331 of which 270 were communicants and 61 baptized children.

**2009:** Our membership totals 337. Of this there are 268 Communicants and 69 Baptized Children. The average attendance at Sunday services is 82 and average attendance at Sunday school is 9. The annual report shows receipts of \$145,546.75 and expenses of \$143,145.95, leaving a balance of the \$29,522.51 at the end of the year. Roger Lavrenz stepped in as head usher when Jack Trunkhill died on January 27, 2009.

**2010:** During 2010 only one natural death occurred among the members of St. John's, the second funeral which was for Vickie Hall was one that took not only the entire county by surprise, but even made state and regional news. The congregation came together to care for the family by providing for the service and meal which occurred at Trinity Lutheran Church in Algona. Even with it being an icy morning the move was necessary to seat the large crowd.

Of our 323 members, 58 are baptized souls and 266 are communicants. Receipts for the year totaled \$135,258.74 and expenses of \$136,504.53, leaving a year-end balance of \$28,276.72.



**2011:** A partnership with St. John's Lutheran Church – Burt, and Zion Lutheran Church in LuVerne; also with St. Paul – Whittemore and Immanuel Lutheran – Immanuel. With the assistance of a deacon the Pastors are able to serve these churches while still being able to maintain full-time service to the congregations that called them.

Choir 2009  
Cheryl Batt, Denise Shipler, Kitty Bierstedt,  
Janice Schealler, Barb Schroeder, Pam  
Madsen, Ken McFarland, Boyd Shipler  
Organist – Marcia Hanna

Total membership is 317 of which 259 is communicants and 58 baptized children. Average attendance for Sunday services is 78 and for Sunday school 10. Church service went to 9:00 am year round to accommodate the partnership with Zion Lutheran Church.

The congregational advocates for St. John's are Doris Blocker, Pastor Jason Peterson, Darrel Schmidt and Debra Steven. Thrivent's new program Choice Dollars changed how we received our funding from Thrivent. Both the church and St. John's Kid's of Kingdom Preschool receive Choice Dollars.

Annual receipts totaled \$143,508.70 and expenses for the year totaled \$141,676.12 leaving a balance of \$30,129.30.

**2012:** We purchased the Vaske Property to the east of St. John's parking lot. In this purchase the lot had a house that was demolished and removed by Reutzel excavating. The lot was leveled off and new landscaping was put in place with the center an engraved rock to make our 100<sup>th</sup> Anniversary to be celebrated in 2013. 3 trees were planted and the area was seeded. Pavers were put in place as a walkway to the stone.

Our LCMS mission Family is Rev. James May and family; they live in Africa and work for Lutherans in Africa.

Our 2012 annual report had a beginning balance of \$30,129.30 receipts totaled \$207,010.11 (including beginning balance) and expenses for 2012 totaled \$175,792.39, leaving a current balance of \$31,217.72

### Quote from Pastor Peterson in the 2012 annual report:

Although we are celebrating our congregation's centennial during the first half of 2013, 2012 was actually the 100<sup>th</sup> year of ministry at St. John's. January 1 is the 100<sup>th</sup> anniversary of the founding of this St. John's, meaning that 100 full years as a congregation has been completed. However, with the harsh and unpredictable nature of Iowa winters, it seemed wiser that the anniversary date serve as the beginning of our commemoration of this centennial rather than its finale.

Our partnership with Zion, LuVerne has continued to be a healthy and beneficial one during the past year. Along with St. Paul, Whittemore and Immanuel Livermore, it is an innovative model for serving multiple rural locations that has worked well for nearly 2 years, and may serve as a model for others to imitate in years to come. However, with the retirement of Pastor Botsford later this spring, it is a model that will have to evolve to meet changing needs.

This will increasingly be the nature of ministry and mission in our area as populations continue to shift and our neighbors' perception of spiritual matters continues to change, the way our congregations provide for the preaching of the Gospel and the administration of the Sacraments must necessarily adapt as well. Just like the days of lifelong residency in a single community and nearly universal church attendance have become a memory, so also the days when congregation have the luxury to be possessive of their pastors and pastors have the luxury to be territorial about their ministry must also change.

God's promises and His means of delivering them (Scripture, Baptism, and the Lord's Supper) remain the same and always will, but the way in which we organize for this to occur among us is open to innovation and creativity. In order to deliver Christ to our county and its neighboring communities, a new spirit of collegiality and cooperation is rising to meet this task, and I pray that it will continue to mature. St. John's has been a leader in this sort of innovation in the past; we have taken new steps in this undertaking with our partnership with Lu Verne; and I hope we will lead the way as an example to our neighbors in the years to come.





## FOUNDATION FAMILIES

**AUGUST BOLLINGER** was born August 1, 1874 in Zurich Switzerland. He came to United States in 1895. In 1902 August married Bertha Rosenthal, who was born in Germany. Children from this union include: Emil, Bessie, Clara, Hattie, Lillian and Aleen. August died in 1952, Bertha in 1962.



August Bollinger Family

**GEORGE KOESTLER, SR.** was born in Germany, July 15, 1866. He married Lydia Jorges, February 24, 1892. In the same year he moved from Wisconsin to Portland Township. The family had livestock and promoter of creamery and elevator. In 1925 retired and built home now owned by Gross family. Grove on property used for community picnics. Children born of this couple were: Eva, Ada, Edna, Eleanor, Thecla, Lydia, Bertha, George and Rae. George Sr. died May 28, 1938, Lydia on January 31, 1948.



Mr. and Mrs. George Koestler, Sr.

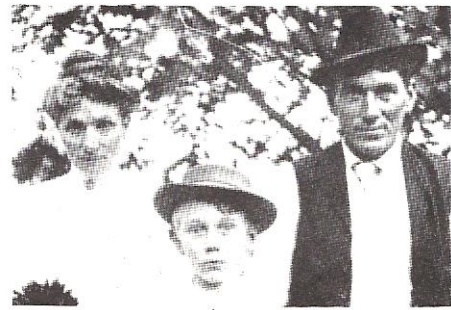
**WILLIAM KOESTLER** was born April 23, 1880. William married Bertha Fischer on March 25, 1903. They came to Burt area in 1906. They raised cattle and horses, member of creamery and elevator boards. Two sons born: Arnold and Leonard. William died February 24, 1936, Bertha on April 16, 1959.

**WILLIAM E. BLEICH. SR.** was born February 19, 1847, wife Ernestine Horn, born December 25, 1842 both in Germany. They were married in 1866 and came to the Kossuth Co. in 1884. Seven children were born: Gustav, Hulda, William, Mathilda, Reinhold, Amelia and Gottlieb. William died December 27, 1930. Ernestine September 28, 1941.



Seated: William E. Bleich, Sr., wife Ernestine, Children, Standing: Hilda (Mrs. Henry Kramer), Gottlieb W., Amelia (Mrs. Oscar Anderson), Reinhold A., Mathilda (Mrs. Herman Putz, William E. Jr. Picture on table is Gustav A., deceased in 1901

**WILLIAM E. BLEICH, JR.** was born November 13, 1872 in Wisconsin and he came to Kossuth County with his parents in 1884. William (confirmed Zion 1891) was married to Martha T. Bohn, (born October 7, 1862), on March 19, 1895. They had one son Albert. Martha died September 21, 1945, William Jr. August 20, 1965 and Albert 1978.



William and Martha Bleich with son, Albert

**REINHOLD A. BLEICH** was born in Wisconsin in 1875, came to Kossuth County with his parents in 1884. Confirmed Zion 1892, Reinhold married Louise Falk in Titonka in 1906. Children: Luella and Raymond. Louise died January 1, 1957 and Reinhold October 17, 1963.



Mr. and Mrs. Reinhold A Bleich, Luella Cherland, Raymond Bleich



**GOTTLIEB W. BLEICH** came to Kossuth County in 1884 with his parents. Gottlieb married Augusta Seeman (who was born in Germany and came to Minnesota with her parents at six months of age). He was confirmed Zion 1895. Three children were born: Isabelle, Viola, Herbert. Gottlieb died July 22, 1952, Augusta April 17, 1963.



G.W. and Augusta Bleich, 1948. Mrs. Don Cronan (Viola). Dr. Herbert Bleich, Mrs. Floyd Koepke (Isabelle).

**FRED LAVRENZ** was born in Illinois February 29, 1888. His wife Jennetta (Nettie) (Trunkhill) Lavrenz was born March 16, 1888 in Wisconsin. Fred moved to Burt in 1908 and was married to Nettie on February 11, 1911. Nine children were born: Mary Ernest Richard, Laura, Roland, Lois, Raymond, Ruth, and Dorethea. Fred died in 1959 and Nettie in 1967.



Richard Lavrenz, Fred Lavrenz, Nettie Lavrenz (Trunkhill), Dorothea Lavrenz (Meier), Raymond Lavrenz, Roland Lavrenz, Ernie Lavrenz, Lois Lavrenz (Weber) (Groen).

**EDWARD C. BIERSTEDT** was born near Burt January 21, 1874. He was baptized and confirmed at Lotts Creek. On February 8, 1899 he married to Anna Wegener. Children born of this marriage: Arthur, Esther, Raymond, Leona, Gladys, Dorothy and Evelyn. Edward died March 30, 1945. Anna April 24, 1964.

**OTTO A. LAABS** died May 5, 1968 at 85 years of age.

**ADOLPH KOESTLER** was born October 14, 1841 in Germany. Children: George, Mrs. Emil Krah, John, Christ, William, Mrs. Geo. Dau. Adolph died November 21, 1925.

**CHARLES E.H. (CARL) RIEDEL** was born October 3, 1856 in Illinois. Son of Rev. C.R. Riedel (1822-1915). Carl was married to Bertha Bohn on December 11, 1887 in the first recorded marriage at Plum Creek Zion. Children of this couple: Ernest, Waldmar, Julia, Martha, Arthur, Emil, Louis and Ralph. Carl died July 26, 1928 Bertha in 1915.



Charlie and Bertha Riedel, Arthur, Emil



the six oldest Carl Riedel children

**ERNEST R. RIEDEL** born March 23, 1889, married Meta Rambath. He was confirmed Zion, 1904. Children were Zelda and Milton. Meta died June 24, 1947, Ernest February 23, 1971. Son Milton resided on the farm his grandfather and great uncle Gustav founded in 1882 until his death.

**ADAM HEERDT** born June 3, 1866 in Illinois, came to Plum Creek area in 1900 with wife Caroline (Demien) Heerdt, born August 21, 1864. Adam and Caroline were married in 1892. Children of this couple: William, Herman, Walter, Kathryn, Conrad, Louise, Louis, Leonard and Gertrude. Adam died June 27, 1932, Caroline August 7, 1932.

**EMIL LEECK** and his wife Emma (born February 21, 1882) were married November 29, 1909. Emma died April 22, 1940, Emil September 28, 1953. Emil Leeck and Emma Drager were married at Plum Creek Zion on November 30, 1909.

## REMEMBER WHEN

- Going to Saturday School meant eating an early lunch and walking to Burt, sometimes along the railroad tracks
- The sermonettes when you came to announce for communion
- The Sunday School picnics at the grove on the west edge of town
- You could become an instant family by immediate placement from the Home Finding Society of Fort Dodge
- Ladies Aid met in the members' homes and dues were 25 cents a month
- While pastor was giving a bible lesson, quilting continues and were paid one cent per yard
- Food and fellowship between sister congregations at all the mission festivals
- Sunday offering was collected with a velvet bag attached to a long pole extended down each pew from the center aisle
- Both English and German services being conducted each Sunday
- Men sat on one side and women on the other
- Women and girls always wore hats for church
- A pastor would allow a new student to take an extra day per week of instructions to catch up with her class for confirmation
- A pastor that had a certain taste for aluminum coffee
- The motorcycle pastor
- When pastors held many jobs within the church, such as secretary, janitor, or choir director. Students not knowing their catechisms always remained after class-even though it was getting dark before they got home
- Pastor's received professional nicknames of "Jesus" "Alleluia" or "Morning"
- Weddings usually took place in the parsonage or home of the bride's parents.
- The ABATE bikers came for breakfast and gave the kids rides on the motorcycles. And they returned annually to continue giving rides.
- The church basement flooded resulting in a new kitchen
- A certain Pastor would approach you as "Friend, Comrade, Fellow Christian"

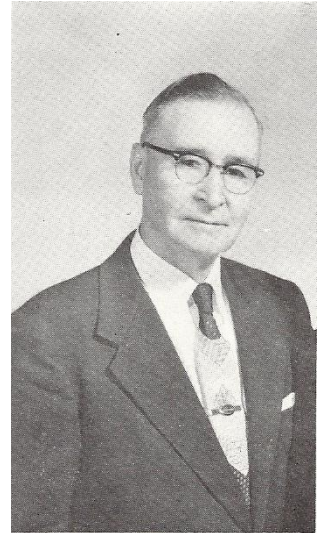
## PASTORS OF ST. JOHN'S



**Rev. C. G. Treskow**  
**1912-1919**



**Rev. M. E. Seltz**  
**1919 – 1927**



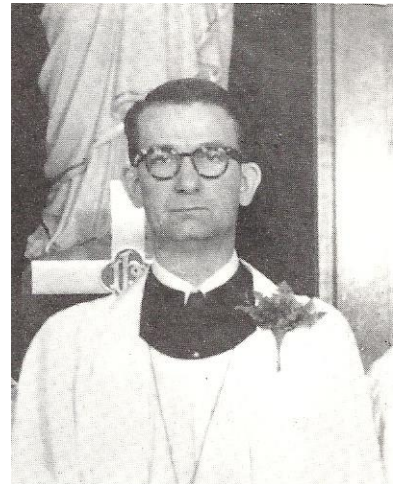
**Rev. Louis Richmann**  
**1927-1944**



**Rev. Ferdinand Reith**  
**1944-1949**

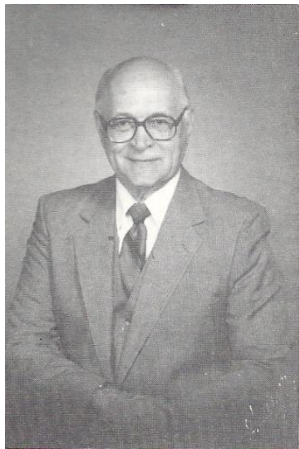


**Rev. E. L. Wittkopp**  
**1950-1957**

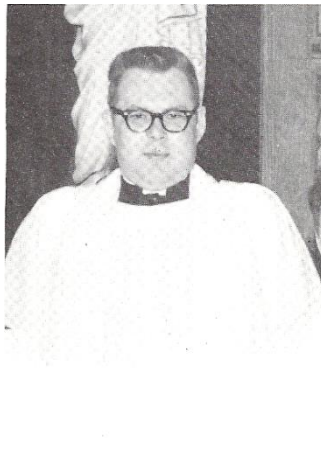


**Rev. Arthur Schultz**  
**1957-1961**





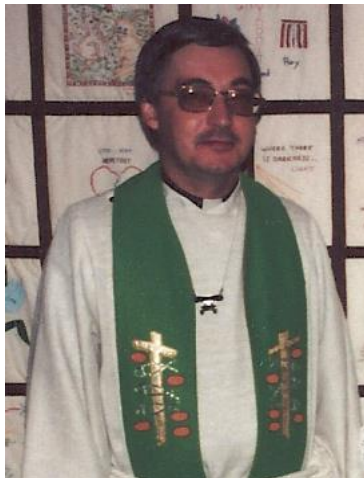
Rev. William Scheer  
1962-1967



Rev. Edwin Bishop  
1967-1971



Rev. David Tews  
1972-1977



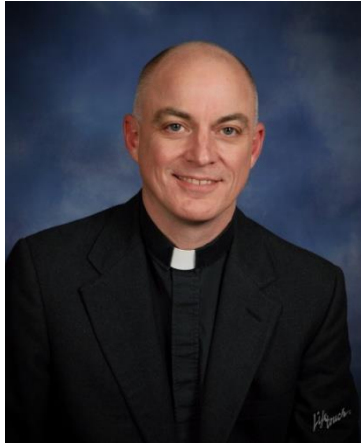
Rev. Arlyn Sturtz  
1977-1985



Rev. Jeffrey Pulse  
1985-1995



Dr. Steve Turner  
(Vacancy Pastor)  
Feb -Oct 1995



Rev. Bryce Bereuter  
1995-1999



Rev. Henry Friedrich  
(Interim)  
1999-2001 & 2005-2006



Rev. Jonathon Watt  
2001-2005



Rev Jason Peterson  
2006-present



Rev (Vicar) Herb Keistman



Lori Potratz-Gamble  
DCE 1986-1989

## Daughters and Sons of St. John's in the Lord's Service



**Rev. Russell Reimers**  
St. Paul's Lutheran (LCMS), Wilbert, MN  
and Our Saviors Lutheran (LCMS) Ceylon MN  
1993-present



**Rev. Howard Batt, Jr**  
Grace Lutheran (ELCA)  
Kewaunee, Wisconsin



**Ray Lavrenz**  
(Deceased)



**LaVonne Boderius**  
Parochial School Teacher 1953-1966

# Veterans

Harold W Reimers  
Emil Hasse Jr.  
Ervin K. Eimers  
William Leeck  
Dale H. Weiske  
Paul H. Hasse  
Carrol Reimers  
Howard J. Batt  
Frederick Schneider  
Joseph Cunningham  
Edward Schmidt  
Alfred Schadendorf, Jr.  
Thues Abbas  
Jerry E. Koestler  
Richard Lavrenz  
David J. Christensen  
Wendell C. Willrett  
Roger Lavrenz  
Duane I. Willrett  
Daryll H. Abbas  
Floyd D. Lavrenz  
Donald J. Madsen  
Allan L. Dacken  
David A. Schmidt  
Rodney A. Schmidt  
Lynn R. Bierstedt  
Vernal G Koestler  
Robert W Wilhelmi  
Terry Briggs

LeRoy Leek  
Donald E. Eimers  
Merlin J. Madsen  
Dale A. Schroeder  
Danford D. Schmidt  
Bernard E. Burnett  
Max E. Bierstedt  
Melvin H. Hasse  
Henry Meier  
John Smith Sr.  
Larry L. Peter  
Harold R. Lavrenz  
David Peter  
Dennis Weigand  
Merwyn J. Cunningham  
Wayne Lavrenz  
Howard Batt Jr.  
Jerry McFarland  
Larry Behnkendorf  
Jim Ruhnke  
Scott Peymann  
Lynn Huber  
Joel Carter  
Roland Lavrenz  
Ernest Lavrenz  
Raymond Lavrenz  
Alex Feuring  
Mike Melick

Merton H. Steward  
Gerald L. Meyer  
Melvin E. Meyer  
Larry M. Kueck  
John Hasse  
Richard Schneider  
Duane Kueck  
Wayne Meyer  
Doyle McFarland  
Roy Roed  
Arnie Skadburg  
Edward Smith  
John Person  
Roger Evans  
Delbert Schealler  
Jenny Schmidt Bengs  
Austin Witham  
Brady Shaffer  
Rolland Peymann  
Allan Jahnke  
John Person  
Dennis Shipler  
Russ Parsons  
John A Smith Jr.



## PLUM CREEK ZION BAPTISMS

**1886**

Edward Elmer Miller

**1887**

Wilhelm Heinrich Krueger  
Adolph Heinrich Falk

**1888**

Bertha Lilia Miller  
Friedrich August Schrader  
Heinrich Albert Schrader  
Maria Paulina Schrader  
Bertha Mathilda Lueck  
Johann Wilhelm Blinkmann  
Edward Heug

**1889**

Adolph Reinhard Krueger  
Ernest Richard Riedel  
Heinrich Johann Falk  
Andreas Henrich Throne  
Elisa Lilia Heug

**1890**

Wilhelm Friedrich Kramer  
Waldmar Hermann Riedel  
Gerhard Wilhelm Buhrke  
Anna Pauline Juliana Buhrke  
Heinrich Gottfried Buhrke  
Emil August Guderian

**1891**

Wilhelmine Caroline Bleich  
Emma Bella Heug  
Leo Carl Throne  
George Friedrich Lueck  
Edward Julius Craemer  
Georg August Leo Blinkmann  
Bertha Mathilda Reik  
Emma Margaretha Groh

**1892**

Carl Ludwig Falk  
Wilhelm Heinrich Meyer  
Walther Julius Wiese  
Elisa Ada Trauth  
Edward Conrad Falk

**1893**

Reinhold Leopold Krueger  
Heinrich Walther Krueger  
Wilhelm Friedrich Bleich  
Helena Louisa Reik  
Walther Ludwig Miller  
Eva Barbara Koestler  
Martha Mathilda Riedel  
Mabella Mathilda Kramer  
Dora Agnes Kuchenreuter

**1894**

Minna Maria Heug  
Arthur Wilhelm Falk  
Conrad Heinrich Groh  
Albert Earl Clarence Miller  
Julius Anton Blinkmann

**1895**

Julie Amalie Riedel  
Herwardt Hermann Falk  
Ada Eleonora Koestler  
Anna Dora Seefeld  
Lydia Adeline Schmalz  
Reinhold Leonard Kramer  
Louisa Katharina Handke  
Anna Emma Whiteing  
Friedrich Louis Heug  
Georg Wilhelm Heug

**1896**

Ortwin Friedrich Bleich  
Christian Friedrich Blinkmann  
Alfred Emil Otto Kresensky  
Dora Emma Jacobs  
Johann Lloyd Barthleth

Nellie Auguste Jacobs  
Himke A. Janssen  
Ida Theresa Maria Lendman  
Harrie Rudolph Lendman

**1897**

Louise Clara Buckland  
Georg Friedrich Mushmann  
Edward Ferdinand Winky  
Alice Allen Seefeld  
Frida Edna Dora Bohn  
Hemann Martin Falk  
Clas Friedrich Schmidt  
Rolf Heinrich Schmidt  
Katarina Maria Heerd  
Edna Anna Krestler  
Clara Emilie Atilie Callies  
Wilhelmine H Weinemann  
Esther Paulina Muller  
Wilhelm Georg Reick  
Ernst Ewald Luck  
Ida Lenora Hueg  
Hugo Gottlieb Wilhelm Bohn  
Frans Julius Jacobs  
Anna Barbara Kuchenreuther  
Herman Frans Wolfgramm  
Hernriette McAlellan  
Waldemar Arnhold Bleich  
Theodor Bruno Gerdes

**1898**

Raymond Joseph Kresensky  
Rose Perl Seip  
Karl Wilhelm Kohl  
Ludwig Emil Butt  
Friedrich Carl Buckland  
Arthur Edward Riedel  
Hubert Friedrich Bohn  
Ida Johanna Lendmann

**1899**

Margaratha Maria Schmidt  
 Bernard Friedrich Behrends  
 Walter Leo Heinsohn  
 Edna May Bankon  
 Carl Friedrich Seefeld  
 Alfred Theodor Falk  
 Alvine Maria Bohn  
 Bianka Ida Blinkmann  
 Conrad Worth Heerdt  
 Frida Luise Heug  
 Karl Friedrich Wilhelm Callies  
 Mina Katharina Kutschara  
 Eleanor Bertha Koestler  
 Bertha Grothe

**1900**

Nellie May Schmidt Falk  
 Liona Emilie Putz  
 Ruth Johanna Kresensky  
 Hilda Maria Rebecka Gerdes  
 Else Maria Willrett  
 Luther Jacob Falk  
 Friedrich Wilhelm Kirstein  
 Emil Julius Riedel  
 Alma Lurena Bohn  
 Louise Katharina Heerdt  
 Louise Barbara Behrends  
 Emilie Auguste Frieda Miller

**1901**

Friedrich Bernhard Luck  
 Alma Dora Miller  
 Maria Helene Gertrude Kohl  
 Heinrich Johann Weinemann  
 Norma Elisabeth Huenhold  
 Mable Mathilde Putz  
 Friedrich Wilhelm Heug  
 Rudolph Julius Bohn  
 Martin Herold Falk  
 Karl Gustav Abraham  
 Paul Bernhard Falk

Hilda Maria Elisa Lendmann  
 Margaretha Mussman  
 Gustav Edward Bleich  
 Christina Louise Nelson  
 Hans Martin Schmidt  
 Edna Paulina Seefeld  
 Rosa Bertha Seefeld

**1902**

Mildred Emma Kresensky  
 Alice May Seip  
 Anna Burnice Bankson  
 Pauline Friedericka Callies  
 Georg Michael Kirstein  
 Gertrude Hertha Miller  
 Roland Ferdinand Leek  
 Albert Reinhold Bleich  
 Ludwig Friedrich Heerdt  
 Georg Rudolph Wilreth  
 Esther Amalie Kramer  
 Bertha Wilhmine Gerdes  
 Hermann Oskar Luck

**1903**

Margaretha Sophie Behrends  
 Harold Albert Putz  
 Philip Theodor Falk  
 Johann Carl Schmidt

**1904**

Leo Ortwein Leek  
 Wilhelm Alverston Nielsen  
 Leonard Bert Heerdt  
 Ferdinand Ludwig Callies  
 Hinrich Otto Bussman  
 Anthonie Friederike Leek  
 Esther Margaretha Falk  
 Louis Herbert Riedel  
 Isabella Mathilde Bleich

**1905**

Wilhelm Martin Behrends  
 Olivia Emilie Pompe

Reinhold Hermann Putz  
 Rudolph Friedrich Leek  
 Emma Katharina Falk

**1906**

Anna Mathilde Pommerening  
 Irvin Louis Siemon  
 Ferdinand Alvin Drone  
 Herold Johann Arens  
 Ernstine Louise Leek  
 Irving Harold Jensen  
 Herbert Wilhelm Bleich  
 Leone Pauline Leek  
 Alvin Johann Huenhold  
 Bertha Margaretha Falk  
 Erich Christian Willrett

**1907**

Ralph Carl Riedel  
 Chester Friedrich Hoppie  
 Child of Carl Leek  
 Herbert Friedrich Kruger  
 Ella Sophia Post  
 Anna Wilhelmine Post  
 Johann Christian Post  
 Esther Alfred Post  
 Emil Jacobsen  
 Wilhelm Jacobsen  
 Johanna Maria Jacobsen  
 Peter Theodor Schmidt  
 Milda Johanna Schmidt  
 Herbert Edward Pompe  
 Paul August Pommerening

**1908**

Helene Anna Behrends  
 Gertrude Anna Rinderknecht  
 Gerhard Leonhard Drone  
 Esther Maria Leek  
 Delma Alma Rakow  
 Otto Wilhelm Weiske  
 Agnes Alwine Falk

**1909**

Raymund Heinrich Kramer  
 Karl Wilhelm Adam Schuler  
 Gertrude Maria Herdt  
 Elmer Wilhelm Schuler  
 Wilhelm Walther Post  
 Martha Anna Carney  
 Louise Therese Callies

**1910**

Luella Louise Ernestine Bleich  
 Lorenz Herman Robert Wiese  
 Emil Bay Petersen  
 Florenz Irene Teemann  
 Laura Anna Rose  
 Helen Marjorie Dransfeldt  
 Edna Maria Andreasen  
 Walter Edward Krueger

**1911**

Augusta Mildred Bobo  
 Edna Marta Emilie Treskow

**1912**

Edwin Arthur Mueller  
 Clara Marie Wiese  
 Coreene Edna Bunkofski  
 Viola Marta Bleich  
 Franz Friedrich Callies

**1913**

Raymond Arthur Bleich  
 Howard Walter Bobo  
 Mildred Sarah Drone  
 Herman Emil Wiese  
 Georg Ludwig Bollinger

**1914**

Clarence Wilbert Bunkofski  
 Elmer Bernard Bobo

**1915**

Ella Viola Dettman

## ST. JOHNS BAPTISMS

**1912**

Earl August Freese  
 Heinrich Erwin Rose

**1913**

Gladys Bula Bierstedt  
 Howard Oliver Powers  
 Georg Ludwig Bollinger

**1914**

Durwood Otto Voight  
 Raymond August Dacken

**1915**

Ella Anna Ewoldt  
 Richard August Lavrenz  
 Clarence Marcus Lohse  
 Ray Oliver Voight  
 Ruth Elizabeth Dacken

**1916**

Margaried Johanna Johnson  
 Einer Clarence Moxness  
 Lilian Christine Bollinger  
 Lucile Elisabeth Treskow  
 Dorothy Viola Bierstedt  
 Mary Louise Krueger  
 Georg Carl Rose  
 Kathrine Louise Keith

**1917**

Raymond Wilhelm Krueger  
 Mildred Leona Bunkofske  
 Laura Jernet Lavrenz  
 Edward George Hoppe  
 Clarence Frederic Hoppe  
 Esther Johanna Hoppe  
 Lyle Lewis miller  
 Lyla May Voight

**1918**

Ruth Dorcas Mueller  
 Willma Viola Shroback  
 Ronald Harold Schultz

**1919**

Evaline Alene Bierstedt  
 Howard Marl Carlson  
 Kenneth Glenford Carlson  
 Clifford Ramus Carlson  
 Vera Christina Carlson  
 Edna May Wibben  
 Florence Marie Heerdt  
 Cora Anna Voight  
 Hilda Maria Zimmerman  
 Viola Selma Bunkofske

**1920**

Roland Harry Lavrenz  
 Pearle Hannah Wiener  
 Erwin Ralph Dettmann  
 Ruth Eleonor Seltz  
 Eugene Leonard Drager  
 Alice Elizabeth Wiese  
 Leola Marie Bunkofske  
 Leoma Mae Keith  
 Harold Wayne Laabs

**1921**

Aleen Lucille Bollinger  
 Leona Mae Heerdt  
 Evanda Marcella Carlson  
 Harold Gottlieb Zimmerman  
 Howard Walter Thompson  
 Harvell Steward  
 Howard Steward  
 Frances Isabel Rosenthal  
 Edna Christina Rentz  
 Leonard Friedrich Schipull  
 Elbe Marion Gehrtz  
 Burton Eugene Gehrtz  
 Leo Lester Gehrtz

Vern Charles Gehrtz  
Lois Bernice Lavrenz

**1922**

Thelma Elsie Carter  
Vermer Herman Bunkofske  
Arthur Edward Wiese  
Walter Henry Dacken

**1923**

Luella Loraine Weiske  
Roy Dugan  
Raymond Fred Potthoff  
Glen James Olsen  
Helen Louise Falk  
Arnold Martin Rentz  
Elva Lorine Carlsen  
Helen Mae Hanna  
Velma Geneva Carter

**1924**

Robert August Wiese  
Agnes Lucile Lovstad  
Rowena Loretta Lovstad  
Russel Glen Lovstad  
Charles William Thompson  
Lorraine Mary Ann Lohse  
Mary Louise Potthoff  
Ruth Helen Lavrenz  
Raymond Henry Lavrenz  
Melvin Adolf Faulstick  
Maria Mathilda Krueger  
Donald Mueller Bleich

**1925**

Betty Bee Christensen  
Virgil Charles Carlsen  
Rheinhold Ferdinand Leek  
Arthur William Leeck  
Herbert LeRoy Leeck  
William Gean Leeck  
Raymond John Rentz  
Joel Frederick Carter

Herbert LeRoy Weiske  
Robert Allen Hanna

**1926**

Warren Enzor Thompson  
Gordon Wayne Wegener  
Edna Mae Fitch  
Lawrence William Krueger  
Dorothy Jane Lavrenz

**1927**

Harold Arthur Schipull  
Ruth Carolyn Carter  
Adeline Mary Faulstick  
Melvin Erwin Kueck  
Deloris LeVon Fischer  
LeRoy Henry Dietzel  
Thelma Rae Putz  
Zola Mae Dacken

**1928**

Walter Clayton Fischer  
Leo Robert Sankey  
Paul Arthur Bierstedt  
Carol Gene Reynolds  
Esther Lorraine Fitch  
Phylis Mae Kain  
Harold Leo Sankey  
Georgia Louise Gerhards  
Dale Howard Weiske  
Anna Marie Rentz  
June Adele Hanna  
Gerald William Schmidt  
Donald Eugene Potthoff  
Better Ann Kueck  
Mary Rae Reimers  
Maxine Gertrude Gifford  
William Carl Madsen

**1929**

Alice Violet Faulstick  
Elenor Lucile Heidenwith  
LeRoy Elger Leeck

Beverly Jean Bussie  
Donald Eugene Bierstedt  
Aredale Blanche Fischer  
Donald Henry Hoppe  
Verne Francis Hoppe  
Victor DaWayne Hoppe  
Ervin Henry Hoppe  
Frances Fay Cook  
Fern Rose Cook  
George William Cook

**1930**

Gordon Floyd Gifford  
Joyce Mae Baas  
Juanita Mae Bollinger  
Lugenia Rae Riedel  
Pearl Naomi Koestler  
Lois Marie Bahmann  
Vera Mae Behnkendorf  
Jacqueline Ann Brown  
Helen Margaret Schmidt  
Delores Emma Cone  
Rhodora Lorraine Bussie  
Nina Bierstedt

**1931**

George Leonard Bollinger  
John Reimers Gerhards  
Virgil Lee Busch  
Leona Mae Gifford  
Emily Blanche Heidenwith

Joan Lee Bleich  
Eugene William Faulstick  
Wanda Lee Haack  
Arlin Frederick Kulow  
Dale Arthur Schroeder  
Esther Koestler

**1932**

Max Edward Bierstedt  
Darlene Irene Schmidt  
Caradene Avis Koepke

**1933**

John Junior Gifford  
 JoAnn Marie Robinson  
 Sylvia Louise Baas  
 Eldon Darold Carlsen  
 Gale Garnett Carlsen  
 Gloria Joan Faulstick  
 Ralph Steward  
 Elaine Janice Heidenwith  
 Kenneth Eugene Fischer  
 Doyle Reinhold Koestler  
 Merton Harlen Steward

**1934**

Velda Louise Peter  
 LaVonne A M Boderius  
 Velma Maxine Weiske  
 Wilma Mae Schmidt  
 Beverly Jean Cain  
 Lyma Jean Carter  
 Shirley Jean Wiener

**1935**

Leona Mildred Kulow  
 Georgia Ann Marlow  
 Gerald Hugo Bierstedt  
 Myrna Marlene Weiske  
 EuClaire Ernest Meyer  
 Doris Marie Wiener  
 Eugene Edward Shipler  
 Shirley Martha Faulstick

**1936**

Donald Alfred Schmidt  
 Delmar Donald Schmidt  
 Elaine Audrey Dodds  
 Charles Walter Faulstick

**1937**

Sheila Ann Rachut  
 Darwin Hubert Koepke  
 Shirley Mae Peter  
 Mary Ellen Kulow

Dale William Schmidt  
 Lucille Ann Gifford

**1938**

Marvin Eugene Marlow  
 Raymond Lee Schmidt  
 Larry Maynard Kueck  
 Gwendolyn Mae Bierstedt  
 Bernice Mary Kulow  
 David James Christensen  
 Vernal Gale Koestler  
 Danford Dale Culbertson  
 Yvonne Marie Shipler  
 Mary (Mrs. Fred) Schmidt  
 Lyle Marlow

**1939**

Larry Burns Long  
 Anita Rose Schmidt  
 Darlene Marie Gifford  
 Elsie Lorine Schulenburg  
 Gary Dean Marlow  
 Mona Lee Koestler  
 Richard Moyer Koestler

**1940**

Edwin August Krekow  
 Marlene Marie Haack  
 Duane Carl Kueck  
 Charlotte Martha Long  
 James Darrel Wibben  
 LeElna Mary Schmidt  
 Fredric Russel Baum  
 Gary Lee Gifford

**1941**

Judy Kae Weiske  
 Patricia Ellen Groen  
 Robert Henry Groen  
 Janice Marie Bierstedt  
 Cecil Greene

**1942**

Delores Ann Leek  
 Alice Jane Wibben  
 Merwyn Everett Shipler  
 Calvin August Long  
 Jerry Eugene Koestler  
 Bonnie LaRae Hansen  
 Karen Kay Kueck  
 Karen Kay Gifford  
 John Lewellyn Dacken  
 John Andrew Nauman  
 Gary Dean Nauman  
 Donna Jean Cronan  
 Kenneth Frederic Schmidt  
 Edward Robert Schmidt  
 Marlene Schipull

**1943**

Bahne Lynn Struecker  
 James Ernest Bierstedt  
 Timothy Mark Larson  
 Beverly Jean Warner  
 Perry Clyde Shipler  
 Janice Rae Shipler  
 Darrel Dean Schmidt

**1944**

Ellen Arlene Wibben  
 James Martin Schmidt  
 Jeanetta Lynn Hanna

**1944 Cont**

Jerry Robert Gifford  
 Duane Weldon Riedel  
 Robert Wilhelm Voight III  
 Marvin Emil Haack  
 Christine Victoria Weiske  
 Lynn Raymond Kueck  
 Janice Kay Dreyer

**1945**

Delmer Paul Baas  
 Lynn Ray Bierstedt

Rebecca Mae Lavrenz  
Allan Lee Hanna  
Lana Jean Cunningham  
Diane Louise Gifford

**1946**

Louis Albert Baas  
Rosann Linda Madsen  
Darwin Lynn Hanna  
Donald Ervin Haack  
Floyd Dean Lavrenz  
Laywin Earl Leek  
Mrs. Anita Weber

**1947**

Dennis Ronald Miller  
Eugene Denis Hanna  
Leonard Fred Schipull  
Richard John Gebken  
Duane Doyle Nauman  
Carole Sue Wiener  
Rosanne Jane Wiener  
Anita Ruth Reith  
Jerry Lynn Eimers  
Donald Kenneth Gifford  
David Allen Schmidt  
John Hiram Boeckholt.  
Margaret L Miller  
Charles G Schrader  
Donna Jean Schrader

**1948**

Duane Carl Peter  
Beatrice Yvonne Cushman  
Dale Dillis Cushman  
Judy Ann Cushman  
Steven Paul Bierstedt  
Daryl Delbert Hanna  
Loreli Lavrenz  
Sandra Denise Eimers  
Duane Irving Leek  
Virgil Eugene Groen  
Dennie Lee Haack

Merwyn Joseph  
Cunningham Jr.  
Victoria Sue Koestler  
Allan Hugh Marlow  
Harold W Cushman  
Inez Lewis Weiner

**1949**

Harold Raymond Lavrenz  
Georgia Ann Hanna  
Kathryn Ann Schadendorf  
Sheri Lee Baker  
Robert Lee Madsen  
VaLora May Kueck  
David James Radig

**1950**

Rodney Arthur Schmidt  
Brian Edward Hanna  
Eugene Russel Eimers  
Robert Roy Cushman  
Linda Lou Hanna  
Cynthia Louise Groen  
Warren D Rentz

**1951**

Wayne Albert Lavrenz  
Ila Mae Behrends  
Kent Everett Eimers  
Janet Luella Schadendorf  
Howard James Batt Jr  
Larry Gene Behnkendorf  
Randall Allan Eimers  
Jill Rae Smith  
Howard J. Batt

**1952**

Christine Marie Groen  
David Allan Eimers  
Bryan Craig Ihnen  
Lonnie Dean Smith  
Carolyn Ann Madsen

**1953**

Sue Ellen Reimers  
Dean Marlow  
Russel Wayne Baas  
Steven Douglas Madsen  
Allan Eugene Meyer  
Lana Rose Cushman

**1954**

Howard Stephen Eimers  
Sally Ann Hanna  
Ronald Marvin Baas  
Barbara Kay Madsen  
Mayme Janette Lavrenz  
Duane Carl Hoernke  
Bryan Craig Reimers  
Leo Edward Hasse  
Joel David Meyer  
Ann Marie Lavrenz  
Stephen Rae Ihnen

**1955**

Mark Ernest Lavrenz  
Barbara Ann Batt  
Susan Kathleen Schroeder  
Jeffrey Dean Miller  
Peggy Ann Hasse  
Kathryn Marie Eimers  
Gerald Don Behnkendorf  
Russell Dean Reimers  
Mary Jo Madsen

**1956**

Carla Dean Reynolds  
Dafawn Dalrae Fischer  
Theodore Edward Meyer  
Thomas Joel Reimers  
Stanley Warren Eimers  
Helen Marie Meier  
Terry Allen Kooker  
Douglas Edward Reimers  
Cheryl Lynn Batt  
John Edwin Lavrenz

**1957**

Roxann Jean Bierstedt  
 Denice Ann Culbertson  
 Jeannette Lucille Madsen  
 Douglas Paul Radig  
 Ruth Helen Lavrenz  
 Vicki Lynn Haase  
 James Mark Woltz  
 Sandra Jean Madsen  
 Karen Lois Eimers  
 Kathy Jo Christen

**1958**

Lori Rae Reimers  
 Gregory Gene Koepke  
 Kenneth Arnold McFarland  
 Thomas Larsen  
 John Dean Hanna  
 Patricia Ann Parson  
 Patricia Lynn Reimers  
 Thomas Allen Woltz  
 Terry EuClaire Meyer  
 David Wayne Pate  
 Rodney Allen Marlow  
 Bryan Edward Meyer  
 Harley E Rusher

**1959**

Kay Marie Christen  
 Bryan Dean Gifford  
 Phyllis I Gifford  
 Leslea Dawn Miller  
 Scott James Koepke  
 John Lee Culbertson  
 Kerry Dean Ihnen  
 Debra Kay Haase  
 Julie Ann Gifford  
 Shirlee Rene Madsen  
 Thomas Raye Lavrenz  
 Timothy Raye Lavrenz  
 David Allen Batt  
 Kendal Ray Larsen

Wendell Claire Christensen  
 Vernald Dean Branstad  
 Nellie M Gifford  
 Roseann Gifford

**1960**

Michael Dale Schroeder  
 Brenda Joyce Meyer  
 Dion Mark Radig  
 Russel John Eimers  
 Bruce Michael Reimers  
 Teresa Ann Tieman  
 Billy D Gifford  
 Aaron J Kleiber Jr

**1961**

Pamela Jean Reimers  
 Kristyn Sue Finch  
 Randall Reed Parsons  
 Michael Lee Eimers  
 Ronnie Everett Pannkuk  
 Debra Lynn Pannkuk  
 Steven Michael Pannkuk  
 David John Meyer  
 Kathy Jo Haase  
 Scott Edward Meyer  
 William John Madsen  
 Sarah Beth Abbas

**1962**

Gerald Elias Meier  
 Mary Elias Meier  
 Terry Scott Leninger  
 Vicky Joy Leininger  
 Clark Harold Christensen  
 Shanna Renee Larsen  
 Joel Edward Smith  
 Pamela Sue Meyer  
 Randall Alan Reimers  
 Michael Allen Marlow  
 Sheila Kay Abbas  
 James Doxill Abbas

Susan Renee Koepke  
 Edson Sabin

**1963**

Timothy John Kissner  
 Kenneth Dreyer  
 Karla Koestler  
 Michelle Renee Kleiber  
 Anthony Trunkhill  
 Todd William Happel

**1964**

Elizabeth Ann Lavrenz  
 Larry Dean Haase  
 Charles C Christensen  
 Debra Jean Fraser  
 Douglas Dean Fraser  
 Tammy Ann Kissner  
 Sharon Kay Gifford  
 Scott Alan Trunkhill  
 Joan Schwieger

**1965**

Elaine Mae Scheer  
 Allen Emil Person  
 Kimmi Lee Koestler  
 Cindy Kae Kline

**1966**

David Charles Trunkhill  
 Kristie Kay Kleiber  
 Curtis Lee Harms  
 Clayton Jene Harms  
 Craig Allen Harms  
 Melissa Kay Taute  
 Tracy Mae Kissner  
 Michael John Person  
 Robert William Pettit  
 Suzanne Marie Christensen  
 Susan Kay Trunkhill  
 Donald Dean Pettit  
 Jamie Lynn McFarland

**1967**

Angela Renee Redemske  
Rodney Paul Meyer  
Suzanna Kay Schmidt  
Randy Charles Kline  
Jon Gary Bollinger  
Joel Ronald Bishop  
Eugene Robert Dreyer  
Kevin Lynn Koestler  
Sharon L Lavrenz

**1968**

Sherri Lynn Heather  
Deena Michelle Lavrenz  
Peggy Sue Behnkendorf  
Belinda Sue Nelson

**1969**

Erick David Bishop  
Teri Sue Person  
Thomas Allan Dacken  
Andrew David Christensen  
Stacey Lynn Trunkhill  
Jill Renee Mullins  
Gary Lynn Riggert

**1970**

Annette Renee Redemske  
Jim Lee Bollinger  
Lori Sue Schmidt  
Jennifer Ann Shipler  
Scott Alan Bierstedt  
Todd William Discher  
David Melvin Haase  
Kimberly Ann Cunningham  
Gary Dean Person

**1971**

Scott Anthony Lavrenz

**1972**

Chad Edward Presthus  
Randall Eugene Batt

Tamara Lynn Batt  
Jeffrey Allan Madsen  
Erika Ann Hansch  
Jerry Eugene McFarland  
Jenny Allies Schmidt  
Marcia Ann Discher

**1973**

Gina Lynn Hanna  
Richard David Tews  
Brenda Lynne Dreyer  
Lee Ryan Huber  
Jonathan Richard Kruse

**1974**

Todd Austin Peter  
Shane Robert Trunkhill  
Teresa Lynn Weringa  
Richard Perry Steward Jr  
Corey Lewis Shipler  
Troy Gerald Hansch

**1975**

Jill Kristine Bristow  
Craig William Madsen  
Amy Louise Person  
Troy Alan Jentz  
Elizabeth Ellen Pannkuk  
Louanna Kay Schoon  
Brian Linn Grisham  
Gary Linn Grisham

**1976**

Amy Leigh Hanna  
Robert Thomas Tews  
Jeremiah Benjamin Gerhart  
Amanda Joy Jensen  
Tessa Lynn Schmidt  
Zachari Lynn Manus

**1977**

James Robert Madsen

Sarah Lynn Knoll  
Christopher Michael Heyes  
Juanita Mae Meier  
Gary L Gordon Jr

**1978**

Conrad Brent Schmidt  
Shane Brennan Madsen  
Kelly Lynne Groen  
Christina Anne Shipman  
Sara Nicole Schmidt  
Nicolas James Madsen

**1979**

Joshua Frederick Follman  
Stephanie Michelle Sturtz  
Carla Kaye Grisham  
Darren Lyle Bates  
Brad Allen Peterson

**1980**

Cory Lee Briggs  
Kerry June Weringa  
Kimberly Nicole Groen  
Candee Mary Shipman  
Brent Lee Bierstedt  
Galen Lee Gordon  
Ann Michelle Jensen  
Jeremy Andrew Clum  
Chad Steven Ditsworth  
Mary Beth Knoll  
Joshua Aaron Baas  
Marcy Lee Baas

**1981**

Andrew Paul Peter  
Eric Douglas Reimers  
Erin Kay Hall  
Caleb Wade Fritzler  
Ryan John Behnkendorf



**1982**

Shanna Monique Anderson  
 Molly Anne Melick  
 Jill Nicole Madsen  
 Mitchell Lee Ditsworth  
 Thomas John Kissner  
 Nicole Anne Reimers

**1983**

Jodie Marie Bierstedt  
 Keith Christian Briggs  
 Jessica Marie Gordon  
 Jon Alan Froehlich  
 Ellen Mae Knoll  
 Noah John Rasmussen  
 Joseph Alan Heyes

**1984**

Melissa Sue Reimers  
 Lindsay Nicole Briggs

**1985**

Christian John Herrick  
 Doris Marie Steven  
 Eden Beth Hamilton  
 Elvis Aaron Kite  
 Matthew Christopher Kite  
 Amy Lynn Jentz  
 Nicole Diane Baas

**1986**

Allison Jean Wood  
 Angela Marie McCann  
 Christina Lynn McCann  
 Drew Richard Rasmussen

**1987**

Jill Marie Schuller  
 April Jean Schuller  
 Grant Alexander Lavrenz  
 Jessica Lynn Heyes  
 Derek Gene Schutjer

**1988**

Ashley Ann Eischen  
 Esther Noemi Lavrenz  
 Allysa Ann Sarchet  
 Nathaniel David Pulse  
 Jessica Marie Meyer

**1989**

Chelsie Marie Rasmussen  
 Jacob Edward Christensen  
 Alyssa Arlene Wood  
 Wade Stafford Briggs  
 Mary Lynn Steven  
 Paige Renee Schuller  
 Brant Justin Karels  
 Jennifer Jacqueline Roed  
 Thomas William Elsey

**1990**

Jordan Ray Camp  
 Isaac Glen Mino  
 Emily Rebecca Eimers  
 Stacey Joyce Schutjer  
 Sara Lynn Sarchet

**1991**

Abby Caroline Eischen  
 Eden Leeann Koestler  
 Jordan Thomas Jahnke  
 Jonathan Christian Pulse  
 Chelsie Rae Krull  
 Alexander Raymond Feuring  
 Glen Richard Schuller  
 Nathan Fennell Soldat  
 Jesse Lee Soldat

**1992**

Andrew Michael O'Toole  
 Gregory Miles Keith Doege  
 Karen M Payne-Beaver  
 Jennifer Lynn Payne-Beaver  
 Nicholas Karl Bachmann

**1993**

Mikal Soo Roberta Pulse  
 Megan Anne Roed  
 Brady Jay Shaffer  
 Courtney Michelle Schneider  
 Shirley Diane Shaffer

**1994**

Megan Anne Crosser  
 Micah C Nguyen Lavrenz  
 Paul Thomas Loken  
 Emily Louise Loken  
 Joseph Cody Culbertson  
 Rachel Nicole E Feuring  
 Sylvia Jane Loken

**1995**

Shannon Elizabeth Koestler

**1996**

Courtney Kaye Groen  
 Kelsey Lynn Crosser  
 Kali Swamini Karels  
 Lexi Jean Callahan

**1997**

Alba Josefina Lavrenz  
 Joshua Mikal Culbertson  
 Morgan M Kearney-White  
 Garrett Wade Heckman  
 Phillip Eugene McFarland  
 Justin David Culbertson  
 Christian Thomas Haase  
 Colten Lee Bengs  
 Kia Catherine McFarland  
 Angela Sue McFarland  
 David Michael Lee Gebken  
 Dale Robert Siemens  
 Rene JoAnn McFarland

**1998**

Hanna Bo Grimm  
 Joshua Tyler Person

Ryan Lucius Leaneagh  
Drew Thomas Reinhart  
Austin James Witham  
Sienna Gabrielle Wolf  
Michail Douglas Aaron  
Gwendolyn Anne Schutjer

#### **1999**

Olivia Claire Marlow  
Calvin James Koestler  
Lane Montergomery Evanson  
Michael Charles Crosser  
Alexandria Rose Bierstedt  
Bob Milford Simmons

#### **2000**

None

#### **2001**

Vivian Oshjae Lavrenz  
Chardonnay Eniqua Lavrenz  
Brynetta Oshanek Lavrenz  
Maci Faith Marlow  
Noah James Reinhart  
Brandon Cole Koestler  
Aaron Michael Bixby  
Kaitlyn Nicole Bierstedt

#### **2002**

Grayson Riley Rowlet  
Cameron Michael Haase  
Michael Jolynn Hall  
Jacob Allen Hall  
David Jonathan Harlan  
Caleb Hunter Christensen  
Jolene Renae Bowman  
Jaden Marcella Hall  
Alandra Paige Schutjer

#### **2003**

Gabrielle Michael Kelly  
Kayla Mae Poulin

Austin James Poulin  
Michael Leonard Hall

#### **2004**

McKensie Maree VanVoorst  
Nicholas Ray Christensen  
Christian Michael Bierstedt

#### **2005**

Jasmine Rose Hall

#### **2006**

Evan Jon Posey

#### **2007**

Hayden Robert Hutchinson  
Lillian Carole Peterson

#### **2008**

Jacob Myles Haase  
Caelum Matthew Blocker  
Jackson Ray Hutchinson

#### **2009**

Jon Lee Storevik  
Emalee Elizabeth Peterson  
Kenna Rae Hatten  
Ivy Rose Helmers

#### **2010**

Alexander Paul Jahnke  
Taylor Lynn Parsons  
Zackery Kaden Steven

#### **2011**

Ellanor Sophia Peterson  
Carolyn Annmarie Faber  
Caleb Spencer Faber  
Caela Jo Faber

#### **2012**

Addy Mae Hutchinson  
Charlie June Marlow  
Christopher Faber

#### **2013**

Alana Lee Jahnke  
Hayden Madsen Salmonson  
William Paul Peterson  
William Kent Griffin  
Brooklyn Leigh Griffin  
Ryder Dean Parsons



Addy Mae Hutchinson  
Ellen Hutchinson

## **Plum Creek Zion Confirmations**

#### **1891**

Wilhelm Leeck  
Wilhelm Bleich  
Gustav Bleich  
Alice Miller  
Mathilda Bleich

#### **1982**

Reinhold Bleich  
Wilhelmine Miller

#### **1983**

Emilie Bleich  
Maria Bahr

#### **1894**

Freidrich Lueck  
Phillip Miller

Friedrich Miller  
Clara Bohn  
Paulina Seefeld  
Ida Krueger  
Ida Sewick  
Dorothea Miller

**1895**

Gottlieb Bleich  
Emma Krueger

**1896**

Albert Krueger

**1897**

None

**1898**

Herman Bremer  
Johannas Bahr  
Martin Kramer  
Frans Heinsohn  
Georg Falk  
Louis Kutschara  
Elsie Jacobs  
Catherine Miller  
Dorothea Mussmann  
Amalie Kramer  
Louise Miller  
Adele Broker  
Friedrich Kruger

**1899**

None

**1900**

Richard Pommerening  
Otto Falk  
Karl Kruger  
Emmaline Miller  
Anna Kutschara  
Angelina Falk  
Mathilda Miller

**1901**

None

**1902**

Paul Kruger  
Georg Bocker  
Wilhelm Baack  
Edward Miller  
Otto Pommerening  
Wilhelm Kruger  
Aldolph Kruger  
Edward Heug  
Ida Bremer  
Louise Falk  
Julia Kutschara  
Lora Falk

**1903**

Frans Repezyński  
Adolph Kruger  
Hermine Miller

**1904**

Ernest Riedel  
Waldmar Riedel  
Mathilda Falk  
Bertha Baack  
Minna Baack

**1905**

Emil Wiese  
Carl Pommerening  
Andreas Falk  
Emma Callies  
Martha Callies

**1906**

Elisabeth Heug  
Emma Heug

**1907**

Albert Drager  
Arthur Falk  
Edward Falk

Wilhelm Heerdt  
Lena Pompe  
Martha Riedel  
Elsie Pommerening  
Anna Falk

**1908**

None

**1909**

Johann Falk  
Edwin Weiske  
Karl Weiske  
Julia Riedel

## **St. John's Confirmations**

**1910**

Herman Heerdt  
Walter Heerdt  
Hermann Willett  
Waldemar Bleich  
Ortwin Bleich  
Edwin Ludwig Bunkofske  
Wilhelm Heinrich Bunkofske  
Friedrich Wilhelm Willrett

**1911**

Louise Emma Rose

**1912**

Albert R Willrett  
Rudolph Weiske  
Clara Amelia Callies  
Helen Lydia Weiske

**1913**

Arthur Riedel  
Friedrich Callies  
Friede Emma Mueller

**1914**

None

**1915**

Gustav Edward Bleich  
 Maria Martha Mueller  
 Elsie Marie Willrett  
 Walter J Bunkofske  
 Heinrich Theodor Bunkofske

**1916**

Nettie Lavenz  
 Albert Reinhold Bleich  
 Franz Gustav Teskow  
 Eleanor Bertha Koestler  
 Thecla Leila Koestler  
 Lewis John Heerdt  
 William Oscar Anderson  
 Arthur Carl Bierstedt  
 Leona Amelia Putz  
 Harry Thomas Looft  
 Mary Louise Krueger

**1917**

Margareta Berndsen Wibben  
 Antje Gerds Rekers Wibben

**1918**

Reinhold C Koestler  
 Louis Friedrich Koestler  
 Esther Martha Mueller  
 Leonard Adolph Koestler  
 Emil August Bollinger  
 Lydia Marietta Koestler  
 Leonard George Heerdt  
 Esther Maria Bierstedt

**1919**

Elisabeth Ida Bollinger  
 Isabelle Mathilda Bleich  
 A Grabran Dina Wibben  
 Rosa Anita Wiese

Anna Sophia Gerhards  
 Ralph Raney Markla

**1920**

Harry Putz  
 John Gerhards  
 Florence Wiener  
 Rosa Wiener

**1921**

None

**1922**

Ranney Putz  
 Herbert Bleich  
 Raymond Bierstedt  
 Bertha Koestler  
 Gertrude Heerdt  
 Clara Bollinger

**1923**

Minnie Dorothea Ewoldt  
 Caroline Gertrude Carlsen  
 Edith Minnie Falk

**1924**

Edna Anna Dacken  
 Viola Tena Dacken  
 Luella Louise Bleich  
 Florence Marguerite Laabs  
 Ervin Wiliam Laabs  
 Leona Rosanna Bierstedt  
 Arnold Hans Koestler  
 James Hugh Powers  
 George Henry Powers  
 Lawrence John Bergman  
 Alfred M Rentz

**1925**

None

**1926**

Lawrence Robert Wiese  
 Peter William Kollasch

Walter H Sorsensen  
 George Christopher Koestler Jr

Carl Henry Wiener  
 Raymond August Dacken  
 George F Markla  
 Floyd W Koepke  
 Raymond Arthur Bleich  
 Nellie Martha Wiener  
 Beata Martha Kollasch  
 Irene Emma Dacken  
 Helen Marie Weiske  
 Florence Anna Bleich  
 Mildred Sarah Drone  
 Isabel Lorena Leeck  
 Mathilda Christina Lohse  
 Edith Alvina Schroeder  
**1926 continued**  
 Marie Catherine Schroeder  
 Viola Martha Bleich  
 Hattie Viola Bollinger  
 Clara Marie Wiese

**1927**

Fred August Schmidt  
 Walter John Schmidt  
 Elmer Edwin Ewoldt  
 Edna Henrietta Rath  
 Gladys Beulah Bierstedt  
 Raemond Florence Koestler

**1928**

Mrs. C H Fischer  
 Ernest Eugene Fischer  
 Eva Blanche Fischer  
 Walter Clayton Fischer  
 Leonard Richard Drager  
 Martha Mathilda Drager  
 Henry August Dietzel  
 Mrs. Merle Dietzel  
 Leo Robert Sankey  
 William Madsen  
 Hermann Anton Lohse

**1929**

Dorothea Gerhards  
 Loren J Brown  
 Howard O Powers  
 Henry August Scheppman  
 Robert Edward Schmidt  
 Henry Walter Ewoldt  
 Wayne Carl Drone  
 Ernest Fredrick Lavrenz  
 Elmer Ernest Bunkofske  
 Richard Aguston Lavrenz  
 Lawrence Martin Schipull  
 Howard Merle Carlsen  
 Kenneth Glenford Carlsen  
 Clarence John Lohse  
 Clarence Wilbert Bunkofske  
 Herman Emil Wiese  
 Dorothy Viola Bierstedt  
 Mabel Martha Wiese  
 Mildred Leona Bunkofske  
 Irene Martha Drager  
 Ruth Elizabeth Dacken  
 Neoma Emily Wegener  
 Ruth Dorothy Kueck  
 Martha Mathilda Schipull  
 Anna Marie Schipull

**1930**

Gerald Wiener  
 Raymond Carter  
 Lorraine Kollasch  
 Lillian Bollinger  
 August Robinson  
 Nina Bierstedt

**1931**

Wilber Louis Baas  
 Louis Edward Scheppman  
 Richard Hermann Weiske  
 John Robert Carter  
 Mildred Ernestine Putz

Evelyn Elaine Bierstedt  
 Mrs. R G Koestler

**1932**

None

**1933**

Harold Reinhold Weiske  
 Milton Carl Riedel  
 Roland Harry Lavrenz  
 Viola Selma Bunkofske  
 Sophia Amelia Schipull  
 Luella Clara Schmidt  
 Marie Elizabeth Carter  
 Martha Anna Ruhnke  
 Ralph Steward

**1934**

Maynard Frederick Kueck  
 Marvin H Kueck

**1935**

Julius Wiliam Baas Jr  
 George Albert Hanna  
 Harold S Lee  
 Lois Bernice Lavrenz  
 Pearl Luella Wiener  
 Zelda Emma Riedel  
 John Leo Faulstick  
 Eugene Leonard Drager  
 Leonard Fred Schipull

**1936**

None

**1937**

Alice Schmidt  
 Marjorie Joan Baas  
 Melvin Theodore Baas  
 Veryl Dean Baas  
 Donald Carl Behnkendorf  
 Velma Geneva Carter  
 Dorothy Lena Faulstick  
 Wilfred Ernest Faulstick

Helen Mae Hanna  
 Ruby Mae Kueck  
 Cecil William Langerman  
 Marcus John Langerman  
 Raymond Henry Lavrenz  
 Mary Jean Rachut  
 Margaret Evelyn Richmann  
 Luella Lorraine Weiske

**1938**

Maria Mathilda Krueger  
 Anita Louise Kulow  
 Velda Koestler  
 Mary Ellen Schmidt  
 Lyle Marlow  
 Leonard Warner  
 Reinhold Leeck  
 Arthur Leeck  
 Herbert Leeck

**1939**

Hebert LeRoy Weiske  
 Robert Allen Hanna  
 Caroline Marie Hasse  
 Rosetta Ann Gifford

**1940**

Lawrence Wiliam Krueger  
 Elvera Helena Gifford  
 Adeline Mary Faulstick  
 Margaret Katherine Reimers  
 Ruth Carolyn Carter  
 Shirley Ann Sewick  
 Dorethea Jane Lavrenz  
 John Whitford

**1941**

June Bierstedt  
 Betty Bea Christensen  
 Cecil Greene  
 Evelyn Bertha Meyer  
 Gerald Louise Riedel  
 Paul Arthur Bierstedt

Earle James Balgeman  
Luverne Henry Schroeder  
Melvin Erwin Kueck  
Dale Howard Weiske  
Gladys Geneva Gifford

**1942**

Henry Edwin Wiese  
Bertha Johr  
Herbert Walter Wiese  
Myrle Hansen  
Ervin Kenneth Eimers  
Paul Henry Haase  
Carol Gene Reynolds  
Everett LeRoy Eimers  
Emil Leo Haase  
Alice Violet Faulstick  
Betty Ann Kueck  
Beverly Jean Bussie  
Helen Adene Rachut  
June Adele Hanna  
Harley D McFarland

**1943**

None

**1944**

Gordon Floyd Gifford  
Herbert Warren Larsen  
Harold William Reimers  
Lugenia Rae Riedel  
Stella Irene Rachut  
Shirley Anne Richmann  
Rhodora Lorraine Bussie  
Vera Mare Behenkendorf  
Joyce Mae Baas  
Leona Mae Gifford  
Mrs. Wilbert Baas

**1945**

Eugene Paul Meyer

**1946**

Donald Eugene Bierstedt  
Max Edward Bierstedt  
LaVonne Marlys Bleich  
Donald Eugene Eimers  
Darlene Ruth Eimers  
Bueford Waldean Kickbush  
Caradene Avis Koepke  
Marcella Ann Madsen  
Shirley Elisabeth Miller  
Herman Edward Rachut  
Carrol Francis Reimers  
Dale Arthur Schroeder

**1947**

Shirley Baas  
LaVonne Eimers  
Margaret Miller  
Harley E Boechholt  
Paul R Gebken  
LaVonne Anna Boderius  
Gale Garnett Carlsen  
Robert Fred Dodds  
Ann Elsie Gebken  
Betty Jean Gebken  
Deloris Jean Gifford  
Doris Jane Kickbush  
Vernon Arlo Leeck  
Gerald Lewis Meyer  
Velda Louise Peter  
Gary Dean Reynolds  
Merten Harlen Steward  
Velma Maxine Weiske  
Sylvia Louise Baas  
Donald Dean Reimers

**1948**

Alfred W Schadendorf  
Merwyn J Cunningham  
William R Voight  
Harold W Cushman  
Henrietta Cushman  
Inez W Wiener

Gerald Hugo Bierstedt  
Richard Eugene Gifford  
EuClaire Ernest Meyer  
Danford Dale Schmidt  
Esther Mary Ann Hasse  
Marlene Delia Leeck  
Evelyn Mildred Madsen  
Elnora Louise Schadendorf  
Myrna Marlene Weiske  
Janet Louise Sage  
Betty Bierstedt

**1949**

Marie Ellen Behnkendorf  
Marie Evelyn Gebken  
Georgia Ann Marlow

**1950**

Edward M Smith  
Homer J Sabin  
Gwen M Mann  
Silbelt H Behrends  
Cordia Heiderscheidt  
Darla Jeanive Bussie  
Elaine Audrey Dodds  
Charles Walter Faulstick  
John Edward Hasse  
Janice Ruth Madsen  
Melvin Edward Meyer  
Sheila Ann Rachut  
Warren Dean Rentz  
Joann Mae Schadendorf

**1951**

Richard Groen  
Howard J Batt  
Darwin Koepke  
Ruth Schadendorf  
Shirley Mae Peter  
Lucille Ann Gifford

**1952**

Margery Helen Abbas

Marvin Eugene Marlow  
Theues Lee Abbas  
Wendell Charles Willrett  
Gwendolyn Mae Bierstedt  
David James Christensen  
Vernal Gale Koestler  
Larry Lee Dreyer  
Henry A Dacken  
Mavis Johnson  
Bert Johnson  
Rita Schroeder  
Robert N Wolcott  
John E Abbas

**1953**

Alfred W Schadendorf Jr  
Richard George Schneider  
Gary Dean Marlow  
Karen Kay Lavrenz

**1954**

LeElna Mary Schmidt  
Frederick John Schneider  
Judy Kay Weiske  
Larry M Kueck  
Duane C Kueck  
Bernard F Miller

**1955**

William F Meyer  
Edith C Meyer  
Doris L Madsen  
Janice Marie Bierstedt  
Ladora Louise Peter  
Helena Martha Meyer  
Jerry Eugene Koestler  
Delbert George Abbas  
Darold Howard Abbas

**1956**

Mary Lou Presthus  
Sandra Jean Schadendorf  
Sharon Kae Miller

Joseph Robert Cunningham  
Richard William Lavrenz  
Kenneth Frederick Schmidt  
Donald James Madsen  
Edward Robert Schmidt  
Erwin C Schwietert  
Patricia A Meyer  
Lynda A Rash  
Barbara J Dittmer  
Russell R Parsons  
Harley E Kooker

**1957**

James Ernest Bierstedt  
Elmer Dean Abbas  
Darrel Dean Schmidt  
Terry Wrex Tieman  
Duane Lee Willrett  
Linda Margaret Peter  
Jeanette Lynn Hanna

**1958**

Lawrence Dale Meskemin  
Roger Lee Lavrenz  
Walter Charles Dacken  
Janice Kay Dreyer  
Mary Janice McFarland  
James Martin Schmidt  
Janet Lee Meyer  
Edith L Tieman

**1959**

Judy Kay Abbas  
Lynn Ray Bierstedt  
Lana Jean Cunningham  
Rebecca Mae Meier  
Kurtis Ray Rusher  
William Gifford  
Nellie Gifford  
Roseann Gifford

**1960**

Marjorie Ann Baumgard

Floyd Dean Lavrenz  
Nancy Ann Presthus  
Rosann Linda Madsen  
Phyllis Grace Wiegand  
Billy D Gifford  
Aaron J Kleiber

**1961**

Earl W Meier  
Allen Lee Dacken  
Eugene Denis Hanna  
David Allen Schmidt  
**1961** continued  
Alan Arthur Schultz  
Lynn R Kueck  
Mary F Abbas

**1962**

Merwyn Joseph Cunningham  
Victoria Sue Koestler  
Loreli Lavrenz  
Connie Sue McFarland  
Duane Carl Peter  
Pamela Kay Rusher  
Dennis Maynard Wiegand  
Charles Kline  
Edson Sabin

**1963**

Barbara Pannkuk  
Diane Abbas  
Joyce Baumgart  
Ronnie Dacken  
Bernita Johnson  
Harold Raymond Lavrenz  
Robert Lee Madsen  
Phillip McFarland  
Henry Meier  
Linda Meyer  
David James Radig  
Kathy Ann Schadendorf  
Jerry Kissner

Richard Trunkhill  
Mennet Trunkhill

**1964**

Herman Putz  
Jerry Gifford  
Hazel Mann  
Paul Schwieger  
Joan Schwieger  
Linda Lou Hanna  
Scott Scheer  
Rodney Arthur Schmidt  
Amanda Pettit

**1965**

Howard James Batt Jr  
Larry Gene Behnkendorf  
Wayne Albert Lavrenz  
Jerry Roger McFarland  
Jill Rae Smith  
Steven William Scheer  
Janet Luella Schadendorf

**1966**

None

**1967**

Kevin Fraser  
Cheryl Kruse  
Steven Douglas Madsen  
DeAnn Marlow  
Allan Eugene Meyer  
Dale Alan Fraser  
Fred Jensen  
Sharon L Lavrenz

**1968**

Howard Stephen Eimers  
Sally Ann Hanna  
Ann Marie Lavrenz  
Mayme Jeanette Lavrenz  
Joel David Meyer

Vicki Lynn Skadburg  
Dwayne A Nelson

**1969**

Gary R Black  
Gary D Huber  
Wanda R Marshall  
Barbara Ann Batt  
Gerald Don Behnkendorf  
Kathryn Marie Eimers  
Joel Merwin Jentz  
Jayne Marie Skadburg  
Marlene S Cunningham  
James H Redemske  
Pamela Sue Madsen

**1970**

Cheryl Lynn Batt  
Stanley Warren Eimers  
Bryan Dean Gifford  
Allan Jerome Jergens  
Russell Dean Reimers  
Stephen Paul Schwieger

**1971**

Roxann Jean Bierstedt  
Michael John Fraser  
Vicki Lynn Haase  
Colleen Marie Jentz  
Jeffrey Lynn Jentz  
Rachel Beth Kruse  
Douglas Paul Radig  
Douglas Edward Reimers  
Diane Rae Skadburg

**1972**

Mary Anne Christensen  
Karen Lois Eimers  
Diane Marie Fraser  
Ruth Anne Kruse  
Sandra Jean Madsen  
Patricia Ann Parsons

**1973**

David Allen Batt  
Julie Ann Gifford  
Debra Kay Haase  
Kenneth Arnold McFarland  
Terry EuClaire Meyer  
Debra Lynn Pannkuk  
Patricia Lynn Reimers

**1974**

Wendell Claire Christensen Jr  
Russell John Eimers  
Brenda Joyce Meyer  
Steven Michael Pannkuk  
Dion Mark Radig  
Valarie Schmidt  
Delores Hanna  
Jerry Wiener

**1975**

Michael Lee Eimers  
Kathy Jo Haase  
Randall Reed Parsons  
Pamela Jean Reimers  
Shari Kay Skadburg  
Cynthia Ann Smith

**1976**

Claudia Olson  
Charlene Baas  
Debra Jean Fraser  
Douglas Dean Fraser  
Daniel Waldo Kruse  
Randall Alan Reimers  
Teresa Silber  
Joel Edward Smith  
Clark Harold Christensen

**1977**

Richard Knoll  
Marjorie Schoon



Lori Ann Jentz  
Timothy John Kissner  
John Anthony Smith III  
Lyle D Karels  
Christine C Groen  
Larry E Manus  
Gary L Gordon

**1978**

Charles C Christensen  
Sharon Kay Gifford  
Larry Dean Haase  
Tammy Ann Kissner  
Karla Lea Koestler  
Michael Dean Schmidt  
Jane E Asmus  
Debbie Ditsworth

**1979**

Brenda Sue Jensen  
Kimmi Lee Koestler  
Catherine Mary Kruse  
Allen Emil Person  
Scott Michael Peymann  
Scott Alan Trunkhill

**1980**

Rodney Jay Davis  
Tracy Mae Kissner  
Michael John Person

**1981**

Suzanne Marie Christensen  
Lisa Kay Davis  
Rodney Paul Meyer  
Angela Renee Redemske  
Suzanna Kay Schmidt  
Susan Kay Trunkhill

**1982**

Peggy Ann Behnkendorf  
Kevin Lynn Koestler  
Christopher Paul Olson

Scott Rasmussen  
Marc Sarchet  
Thomas C Herrick

**1983**

David J Eischen  
Denise Graham  
Jeffery Schutjer  
Doris Gifford  
Paul Olson  
Steven Ditsworth  
Jane Froehlich  
Andrew David Christensen  
Lynn James Huber  
Julie Ann Jensen  
Teri Sue Person  
Stacey Lynn Trunkhill

**1984**

Scott Alan Bierstedt  
Sherri Jean Duer  
David Melvin Haase  
Christopher Gene Hanna  
Timothy Lee Otten  
Annette Renee Redemske  
Lori Sue Schmidt  
Denise Marie Shipler  
Jennifer Ann Shipler

**1985**

Terry Briggs  
Timothy DeLance  
Patricia Lavrenz  
Gary Dean Person

**1986**

Marcy Lee Curtis  
Amy Lynn Bierstedt  
Melissa Alice Davis  
Chad Michael Olson  
Randall L Wood

**1987**

Gina Lynn Hanna  
Jeffrey Allan Madsen  
Jenny Allise Schmidt

**1988**

Lee Ryan Huber  
Jonathan Richard Kruse  
Todd Austin Peter  
Kirk Allen Shipler  
Chad Michael Evans  
Shane Robert Trunkhill  
Duane Heyes

**1989**

Rodney Steven Eimers  
Kimberly Kae Evans  
Craig William Madsen  
Amy Louise Person  
**1989** Continued  
Corey Lewis Shipler  
Alice JoAnn Wilhelmi  
Christina Janell Lucas  
Irene LuRae Miller  
Karla Kay Doege  
Shan Michael O'Toole  
Bruce Edward Roed  
Lisa Sabrina Roed

**1990**

Amy Leigh Hanna  
Tessa Lynn Schmidt  
Sherri Ranae Hilbrands  
Angela Annette Thompson

**1991**

Clay Jeremy Evans  
Christopher Michael Heyes  
Sarah Lynn knoll  
Zachari Lynn Manus  
Tracy Lee Dacken

**1992**

Chad Everett Eimers  
 Jeffrey Jon Kerkove  
 James Robert Madsen  
 Shane Brennan Madsen  
 Conrad Brent Schmidt  
 Sara Nicole Schmidt  
 Nathan Fennell Soldat  
 Bernard Ely Burnett  
 JoAnn Sylvia Burnett  
 Joseph James Gross  
 Barb Lynn Schroeder  
 Elizabeth Ann Crow  
 Shelly Lyn Haase  
 Ruth Elizabeth Nauman

**1993**

Nicholas James Madsen  
 Justin Allen Schuller  
 Jeremy Douglas Thompson  
 Shirley Diane Shaffer  
 Shane Thomas Tegtmeyer  
 Bounita Swanson

**1994**

Brent Lee Bierstedt  
 Cory Lee Briggs  
 Paul Alan Jahnke  
 Mary Beth Knoll  
 Sara Lynn Schroeder  
 Brian Edward Boyle  
 Johanna Denise Ryan  
 Kent Wayne Crosser  
 Steve R Bartlett  
 Sylvia Jane Loken  
 Cheryl Mack

**1995**

Jill Elizabeth Cherland  
 Andrew Paul Peter  
 Christina Lynn Kerkove  
 Jill Marie Schuller

**1996**

Andrew James Lavrenz  
 Molly Anne Melick  
 Shannon Leigh Norland  
 Jill Nicole Madsen  
 Isaac Glen Mino  
 Dell Reutzel  
 Kim Reutzel

**1997**

Jodie Marie Bierstedt  
 Camaron Michael Marlow  
 Ellen Mae Knoll  
 Stefanie Rae Schroeder  
 Rene JoAnn McFarland

**1998**

Lindsay Nicole Briggs  
 Joseph Alan Heyes  
 Esther Noemi Lavrenz  
 Noah John Rasmussen  
 April Jean Schuller  
 Andrew John David Burnett  
 Joseph Charles Jahnke  
 Britney Nicole Norland  
 Tess Marie Reutzel  
 Nicholas Paul Symonds  
 Dale R Siemens  
 Julia M Wagoner  
 Michael D Meyering  
 Justin D Meyering  
 Quintin J Swingin

**1999**

Kelly Jo Alt  
 Billie Jo Burnett  
 Doris Marie Steven  
 Andrea Lee Bierstedt  
 Becky Sue Pederson  
 Galen Lee Gordon  
 Brian William Spry  
 Meghan Elizabeth Burbank  
 Amy Ann Schutjer

Gregory Dwayne Schutjer  
 Jessica Marie Gordon

**2000**

Jason Clair Christensen  
 Tad Lemar Reutzel  
 Jacob Ryan Fox  
 Eric Daniel Thomas

**2001**

Jace Brady Alt  
 Grant Alexander Lavrenz  
 Asa R Schmidt Nielson  
 Jessica Lynn Heyes  
 Drew Richard Rasmussen  
 Spencer Michael Schroeder

**2002**

Allison Marie Christensen  
 Robert (Bob) Simmons  
 Kendra Dawn Person  
 Brady Jay Schaffer  
 Derek Gene Schutjer

**2003**

Michael Leonard Hall  
 Vicky Lynn Hall  
 Linda R Oppedal  
 Jalisa Marie Bowman  
 Jillian Ruth Bowman  
 Jacob Edward Christensen  
 Renee Christine M Feuring  
 Chelsie Marie Rasmussen  
 Mary Lynn Steven

**2004**

Delbert Schealler  
 Janice Schealler  
 Patrick Kelly  
 Kassie Marie Bartlett  
 Emily Rebecca Eimers  
 Paige Renee Schuller  
 Ashley Ann Poulson

Wade Stafford Briggs  
Brant Justin Karels  
Stacey Joyce Schutjer

**2005**

Gordon Ray Oleson  
Jordan Thomas Jahnke  
Glen Richard Schuller

**2006**

Alexander Raymond Feuring  
Alba Josefina Lavrenz  
Vivian Oshjae Lavrenz

**2007**

Michail Douglas Aaron  
Chardonnay Eniqua Lavrenz

**2008**

Anthony (Tony) J Hatten  
Austin James Bierstedt  
Aaron Michael Bixby  
Rachel Nicole E Feuring  
Micah C Nguyen Lavrenz

**2009**

Joseph Cody Culbertson  
Kali Swamini Karels  
Brynetta Oshaneek Lavrenz

**2010**

Roberta Jahnke  
Christina Howell  
Kuleen Parsons

**2011**

Justin David Culbertson  
Joshua Mikal Culbertson  
Christian Thomas Haase

**2012**

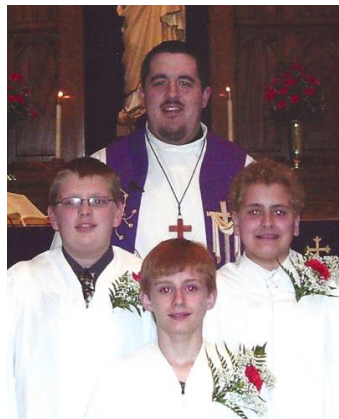
Kristin Faber  
Christopher Faber  
Amanda Heneen

**2013**

Bailey Marlow  
Olivia Marlow  
Halie Struecker



2009  
Joseph Culbertson  
Brynetta Lavrenz  
Kali Karels  
Pastor Peterson



2011  
Christian Haase  
Justin Culbertson  
Joshua Culbertson  
Pastor Peterson

**PLUM CREEK ZION  
MARRIAGES**

**1887**

Carl Riedel and Bertha Bohn

**1888**

Heinrich Kramer and  
Hulda Bleich

**1889**

None

**1890**

Wilhelm Reik and  
Emilie Schroeder

**1891**

Emil E. Wiese and  
Josephine C. Frank

**1892**

Friedrich Miller and  
Paulina Bohn

**1893**

None

**1894**

Wilhelm L. Bohn and  
Clara E. Miller

**1895**

Wilhelm Bleich and  
Martha Bohn

**1896**

Karl A Leeck and  
Emma Rickter

**1897**

None

**1898**

None

**1899**

Herman Putz and  
Mathilda Bleich  
Edward Heug and  
Maria Sophia Bauer

**1900**

Martin Biuk and  
Rosina Appel  
Otto Rudolph Kramer and  
Mathilde Thaves

**1901**

Heinrich Ernst Kramer and  
Alice Miller

**1902**

Georg B Anderson and  
Rosa F C Baack  
Georg Weinemann and  
Elisabeth Kohl  
Hermann Ziegler and  
Ida Lueck  
Edward Fr Pompe and  
Emma A Kruger

**1903**

Edward Darwin Drone and  
Anna M Bleich Pompe

**1904**

Heiko Storh and  
Amalia Kramer  
Friedr W A Gronert and  
Isabelle Pompe

**1905**

Richard A Pommerening and  
Lulu M Kennedy

**1906**

John McCorkle and  
Julia Kutschara

Otto Pommerening and  
Hattie Innman  
Reinhold A Bleich and  
Louise M Falk  
Friedrich A Kruger and  
Lora Anna Falk

**1907**

None

**1908**

Louis Kutschara and  
Ethelyn Wunkel

**1909**

Emil Hermann Wiese and  
Emma M L Callies  
Emil Leeck and  
Emma Drager

**1910**

J.H. Savage and ?  
George Dettman and  
Berta Bunkofske

**1911**

William Freese and  
Elsie Pommerening

**1912**

None

**1913**

George Beard and  
Emma Ruhnke  
Emil Ruhnke and  
Anna Haack

## **ST. JOHN'S MARRIAGES**

**1916**

Frank Miller and  
Minnie Dutton  
Arthur Carter and  
Martha Callies

**1917**

Edwin Weiske and  
Helen Ollom  
Louis Wietzel and  
Edna Koestler

**1918**

William Heerdt and  
Ada Koestler

**1919**

None

**1920**

Walter Thompson and  
Adele Heidenwith  
Herman Bleich and  
May Bowman

**1921**

Alfred Rentz and  
Minnie Zimmerman  
Fred Loeschen and  
Pauline Hennings  
Henry Lee and  
Lucille McDuff  
Herman Willrett and  
Margaret Wibben  
Elmer Hansen and  
Eleanor Koestler  
Henry Olsen and  
Marie Gehrtz  
Rudolph Lisius and  
Eva Koestler

**1922**

Gustav Potthoff and  
Helen Timmer  
A.R. Willrett and  
Anna Wibben  
Harry Sankey and  
Anna Hennings  
Herman Gade and  
Mathilda Haase  
William Schutt and  
Ida Rosenthal

**1923**

Walter Heerdt and  
Audra Bolin  
Harry Putz and  
Mildred Fox  
Henry Schroeder and  
Florence Wiener

**1924**

Roy Chrischilles and  
Rose Wiener

**1925**

Rudolph Salinger and  
Dena Wibben  
Herman Bussie and  
Elizabeth Bollinger  
Walter Sorenson and  
Esther Bierstedt  
Floyd Koepke and  
Isabelle Bleich  
August Pergande and  
Emma Reese  
Fred Rasmussen and  
Emma Looft  
Raymond Reimers and  
Mary Hatcher

**1926**

Reinhard Potthoff and  
Anna Gerhards

Ervin Klatt and  
Anna Schroeder  
Carl Reynolds and  
Clara Bollinger  
Howard Watkins and  
Juanita Parmalee  
William Rike and  
Emma Falk

**1927**

Johnnie Dacken and  
Wilma Hamilton  
Harry Schmeling and  
Marie Schroeder  
Ervin Schwietert and  
Lydia Baum  
George Pruess and  
Gertrude Heerdt

**1928**

Erwin Heidenwith and  
Eva Fischer  
Fred Miller and  
Nellie Wiener

**1929**

Rudolph Willrett and  
Bertha Wibben  
Bernard Schmidt and  
Laura Scheppman  
Ernest Haack and  
Julia Wibben  
Martin Meyer and  
Malinda Schmidt  
Emil Bollinger and  
Selma Bussie  
William Hoppe and  
Emma Roben

**1930**

August Robinson and  
Mathilda Lohse

**1931**

Hans Boderius and  
Marietta Hoeck

**1932**

Walter Rentz and  
Martha Tietz

**1933**

None

**1934**

Carl Wiener and  
Inez Lewis  
Hartwig Richmann and  
Emelda Peters  
Donald Cronan and  
Viola Bleich

**1935**

None

**1936**

Raymond Bartlett and  
Gertrude Bierstedt  
Bernard Jensen and  
Ruth Kueck

**1937**

John Wieland and  
Leona Fitch  
Clarion Long and  
Martha Schipull  
Harold Johnson and  
Irene Engeness

**1938**

Clifford Krantz and  
Raemond Koestler  
Fred Schmidt and  
Mary Ellen Culbertson

**1939**

Leonard Warner and  
Evelyn Bierstedt  
Avery Fitch and  
Lola Cushman  
Gradion Phillips and  
Anna Kollasch  
Marvin Kueck and  
Myrtle Quick

**1940**

Henry Hover and  
Marie Jarges  
Ralph Bierstedt and  
June Bierle  
Axel Andresen and  
Martha Ruhnke  
Otto Bovin and Ida Walker

**1941**

Arthur Leek and  
Dorothy Faulstick  
Howard Lunsman and  
Beada Kollasch  
Cecil Greene and  
Luella Schmidt  
Odey Cherland and  
Luella Bleich  
Leonard Schipull and  
Viola Maharas

**1942**

Robert Mackey and  
Helen Hanna

**1943**

Robert Blumer and  
Rosetta Gifford  
Robert Hanna and  
Phyllis Seegebarth

**1944**

Everett Mittag and  
Ruby Kueck

**1945**

Emery Nelson and  
Evelyn Erke

**1946**

Herbert Leek and  
Marjorie Baas  
Ronald Miller and  
Margaret Traub  
Veryl Baas and Shirley Lewis  
Raymond Eimers and  
LaVonne Shipler

**1947**

Harley Boeckholt and  
Gladys Gifford  
Richard Groen and  
Lois Weber  
Perry Bockness and  
Ruth Coffey

**1948**

Leslie Sorenson and  
Mildred Putz  
James Fredrickson and  
Lugenia Riedel  
Paul Bierstedt and  
Betty Ann Moore  
William Madsen Jr and  
Janet Sage  
Lewis Fraser and  
Adeline Faulstick

**1949**

Siebelt Behrends and  
Nina Bierstedt  
Homer Sabin and  
Isabel Steward

**1949 continued**

Delain Blumer and  
Elvera Gifford  
Harold Bern and  
Mary Jean Rachut  
Donald Behnkendorf and  
Arlene Meyer  
Donald Miller and  
Betty Ann Kueck  
Carol Reynolds and  
Jean Ann Martin  
Roy Jetters and  
Lydia Sorenson  
Gerald Eimers and  
Darlyn Schommer

**1950**

Paul Gebken and  
Dawn Fawcett  
Donald Kruger and  
Gwen Mann  
Edward Smith Jr and  
Helen Rachut  
Paul Clausen and  
Caroline Hasse  
Everett Eimers and  
Lorraine Krause  
Howard Batt and  
Margaret Reimers

**1951**

Merlin Madsen and  
Doris Salisbury

**1952**

Robert Walcott and  
Caroline Koestler  
Eugene Meyer and  
Eunice Wittkopp  
Richard Allan and  
Betty Gebken

**1953**

Wilfred Schmidt and  
     Darlene Eimers  
 Ervin Eimers and  
     Patsy Herbon  
 Robert Christen and  
     Christina Abbas  
 Rev. Henry Friedrich and  
     Evelyn Meyer  
 Richard Harms and  
     Sylvia Baas  
 Junior Hurlburt and  
     Elnora Schadendorf

**1954**

Gerald Meyer and  
     Patricia Deto  
 Thomas Larsen and  
     Evelyn Madsen  
 Raymond Lavrenz and  
     Velma Weiske  
 Bernard Miller and  
     Phyllis Miller  
 James Woltz and  
     Marlene Kroenke  
 Herbert Hackbarth and  
     Joanne Meyer  
 Myron Voehl and  
     Beverly Bussie

**1955**

Kenneth Fischer and  
     JoAnn Schadendorf

**1956**

Wiliam Glawe and  
     Marie Behnkendorf  
 David Miller and  
     Lynda Rash  
 Russell Parsons and  
     Caradene Koepke  
 Wendell Christensen and  
     Esther Hasse

**1957**

EuClaire Meyer and  
     Barbara Dittmer  
 Eugene Marlow and  
     Mary Lou Presthus

**1958**

Richard Mittag and  
     Ruth Schadendorf  
 Johnny Harms and  
     Velda Peter  
 Robert Davis and  
     Stella Rachut

**1959**

Duane Kueck and Carol Rowe  
 Julius Stecker and  
     Judy Weiske

**1960**

John Abbas and Mary Sykes

**1961**

Jerold Skaggs and  
     LaVonne Bleich  
 Dennis Kral and  
     Karen Lavrenz

**1962**

Aaron Kleiber and  
     Sharon Miller  
 Richard Trunkhill and  
     Lana Cunningham  
 Clarence Schutjer and  
     Gertrude Bartlett  
 Charles Kline and  
     Shirley Peter

**1963**

Mark Dawson and  
     Nancy Mino  
 Henry Wesenberg and  
     Sandra Scheer

**1963 continued**

Larry Clauseen and  
     Laura Mino  
 Mennet Trunkhill and  
     Janice Dreyer  
 James Jensen and  
     Jeanette Hanna

**1964**

William Mullins and  
     Janice Bierstedt  
 Jerry Gifford and  
     Mary McFarland  
 Harold Harms and  
     Sandra Schadendorf  
 Boyd Shiplier and  
     Rosann Madsen

**1965**

Dennis Dirks and Donna Sale  
 John Bollinger and  
     Georgia Marlow

**1966**

James Redemske and  
     Loreli Lavrenz

**1967**

Derald Goetz and  
     Pamela Rusher  
 Richard Stockwell and  
     Phyllis Weigand  
 Floyd Lavrenz and  
     Sharon Nelson

**1968**

David Radig and  
     Marcia Dettman  
 Phillip McFarland and  
     Jane Barslow

**1969**

Terry Tieman and  
     Wanda Marshall

Kenneth Ring and  
Linda Meyer

**1970**

None

**1971**

Vance Swanson and  
Patricia Ruhnke  
Randall Presthus and  
Karla Peter

**1972**

None

**1973**

Henry Meier and  
Donna Johnson  
Steven Madsen and  
Vicki Skadburg  
Wayne Lavrenz and  
Rebecca Kruse  
Duane Peter and  
Linda Cooper

**1974**

Mike Hamilton and Jill Smith  
Howard Eimers and  
Mary Janice Miner  
Dennis McGuire and  
Kathryn Eimers

**1975**

Jerry McFarland and  
Cheryl Kruse  
Gary Grisham and  
Barbara Batt  
Larry Manus and  
Mayme Lavrenz  
Brian Gerhart and  
Patricia Parsons  
Charles Deleske and  
Debra Pannkuk

Duane Heyes and  
Ann Lavrenz

**1976**

John Bates and  
DeAnn Marlow  
Brad Shipman and  
Mary Ann Christensen  
Frederick Follman and  
Colleen Jentz

**1977**

None

**1978**

Terry Briggs and Vicki Haase  
Lyle Karels and Karen Eimers  
Steven Ditsworth and  
Debbie Allen  
Gary Gordon and  
Sandra Madsen  
Lee Burris and Alvina Hasse

**1979**

Rick Schuller and  
Debra Fraser  
David Peterson and  
Kathy Haase  
Stuart Bunkofske and  
Diane Skadburg

**1980**

Brian Carlson and  
Jayne Skadburg

**1981**

Gerald Behnkendorf and  
Dorine Metz

**1982**

Michael Asmus and  
Kathleen Heineman  
Marc Sarchet and Amy Roed

**1982 continued**

Scott Rasmussen and  
Cynthia Smith  
Jeffrey Schutjer and  
Brenda Meyer  
Tom Herrick and  
Tammy Kissner

**1983**

Rodney Bierle and  
Sharon Gifford  
David Eischen and  
Debra Haase  
James Elsey and  
Roxann Bierstedt

**1984**

Ronald Nowak and Lori Jentz  
Thomas Schill and  
Rachel Kruse

**1985**

Mike Kleinweber and  
Diane Otten  
Randy Wood and  
Janice Eimers

**1986**

None

**1987**

Rodney Meyer and  
Bonita Eden  
William O'Brien and  
Carmen Wichtendahl  
Mike Eimers and  
Mary Beth Galliant

**1988**

Robert Wilhelmi and  
Alice Thilges



**1989**

Kirk Krull and  
 Angela Redemske  
 Robert Bachmann and  
 Karla Koestler  
 Daniel Hess and  
 Susan Trunkhill  
 Todd Hensley and  
 Monica Cook  
 Gerald Thompson and  
 Angela Mino

**1990**

Shawn O'Toole and  
 Karla Doege  
 Gerrit Bakker and  
 Peggy Behnkendorf

**1991**

Thomas Allan Dacken and  
 Tracy Lee Tripp  
 Daniel Joseph Kesterson and  
 Barbara Ellen Haack

**1992**

Joseph James R Gross and  
 Melissa Alice Davis  
 Joel Edward Smith and  
 Elizabeth Anne Crow  
 Jonathan David Belsaas and  
 Tamara Renee Rasmussen

**1993**

Shane T Tegtmeyer and  
 Jennifer Ann Shipler  
 August Jacob Bernau and  
 Lois Bernice Groen

**1994**

Cory Joe Culbertson and  
 Nicole Danette Totten  
 Timothy Dennis Sprayer and  
 Diana Lynn Cumberland

Kent Wayne Crosser and  
 Pamela Joy Wagner  
 Timothy Dan Bengs and  
 Jenny Allise Schmidt  
 Brian Edward Boyle and  
 JoHanna Denise Ryan

**1995**

Vernon Edward White and  
 Francis Lorraine Kearney

**1996**

None

**1997**

Michael Allen Marlow and  
 Amy Janean Bierstedt  
 Vernal Gale Koestler and  
 Joan Jean Krull  
 Dale Robert Siemens and  
 Patricia Gloria Vaale  
 Scott Allan Bierstedt and  
 Andrea Lee Cook  
 Jerry Eugene McFarland and  
 Rene JoAnn George  
 Ryan Christopher Borlik and  
 Kimberly Kae Evans  
 Jay J Graham and  
 Ann Marie Hanson

**1998**

Thomas L Reinhart and  
 Sarah L Knoll  
 Trent T Parsons and  
 Crystal C Hingson  
 Eugene D Hanna and  
 Marcia K Eimers  
 Michael L Bierstedt and  
 Amy L Person  
 Chad M Evans and  
 Angela C Dorzark

**1999**

Thomas Cetgraf and  
 Christine Hayden

**2000**

Justin James Sommer and  
 Mary Beth Knoll  
 Roger L Lavrenz and  
 Becky Sue Pederson  
 Clark Harold Christensen and  
 Allison Marie Bilyeu  
 Joseph Robert Bren and  
 Michelle Kay Bettin

**2001**

Jeffrey James Riles and  
 Shirley Diane Shaffer

**2002**

None

**2003**

Craig Eugene Hutchinson and  
 Ellen Mae Knoll  
 Kevin Kent Converse  
 Sara Lynn Schroeder  
 Patrick Ryan Kelly and  
 Stefanie Rae Schroeder

**2004**

Dennis Baseman and  
 Janice Bettin

**2005**

None

**2006**

Ronald Raymond Knaus and  
 Christiane Blank Salters  
 Jordan Jon Storevik and  
 Lindsay Nicole Briggs

**2007**

Lucas Dean Parsons and  
Jessica Lynn Heyes  
Michael Lee Blocker and  
Doris Marie Steven  
David Kevin Soboleski and  
Elizabeth Ann Weber

**2008**

Anthony Joseph Hatten and  
Stefanie Rae Schroeder



Tony and Stefanie Hatten  
Gabby Kelly

**2009**

Joseph Charles Jahnke and  
Rachel Ann Price

**2010**

None

**2011**

Joseph Alan Heyes and  
Christina Marie Howell  
Jacob Salmonson and  
Jill Nicole Madsen



Joe and Rachel Jahnke

**2012**

None

## Plum Creek Zion Burials

**1890**

Johann Lueck  
Justine Lueck

**1891**

Anna Meyer

**1892**

Juliana Miller  
Carl Guderian

**1893**

Reinhold Krueger  
Heinrich Krueger

**1894**

Gustav Lueck

**1895**

Gottlieb Bohn

**1896**

None

**1897**

Katrina Heerdt  
Martin Bahr  
George Heug  
Henrietta Abrahams  
Esther Miller  
Justine Bahr

**1888**

None

**1899**

Elmer Noah Seefeld

**1900**

Julianne Bohn  
Luther Falk  
Louise Heerdt

**1901**

Martin Falk  
Arthur Callies  
Gustav Bleich

**1902**

H. Seefeld  
Karoline Guderian

**1903**

None

**1904**

Minna Katherina  
Geschwester

**1905**

Wilhelm Kruger

**1906**

None

**1907**

Child of Carl Leek  
Emilie Bleich Kruger  
Child of Richard  
Pommerening

**1908**

None

**1909**

None

**1910**

None

**1911**

Auguste Krueger

**1912**

Wilhelm Krueger

**1913**

None

**1914**

None

**1915**

Rev C R Riedel  
Berta Bohn Riedel

**1916**

None

**1917**

None

**1918**

None

**1919**

None

**1920**

Johanna Riedel

## St. John's Burials

**1913**

Mary Lavrenz

**1914**

None

**1915**

Georg Bollinger

**1916**

None

**1917**

Friedrich Leeck  
Heinrich Hennings

**1918**

Johann Zimmerman  
Ruth Mueller

**1919**

Mrs. Johann Dettmann

**1920**

Harold Laabs

**1921**

John Koepke  
 Laura Lavrenz  
 Diederich Clausen  
 Stillborn son Godden  
 Harvell Steward  
 Howard Steward

**1922**

None

**1923**

Roy Dugan  
 Mrs. John Potthoff  
 Arnold Rentz

**1924**

None

**1925**

Emil Wiese  
 Adolf Koestler

**1926**

None

**1927**

Anna Zimmerman  
 Emilie Schipull  
 Baby Bussie

**1928**

Carl Riedel  
 Ruth Lavrenz

**1929**

Maxine Gifford  
 Anna Rentz

**1930**

Melvin Faulstick  
 Gerhard Gerhands  
 William Bleich Sr.

**1931**

Caroline Bunkofske  
 Mathilda Pommerening  
 Veronica Hix

**1932**

Adam Heerdt  
 Caroline Heerdt

**1933**

John Falk Sr  
 William Bierstedt  
 Albert Bierstedt

**1934**

Carl Carlson  
 Gerick Kueck

**1935**

Anna Laabs

**1936**

Shirley Faulstick  
 Anna Hoeck  
 William Koestler  
 Mrs. Paul Lee  
 John Potthoff

**1937**

None

**1938**

George Koestler Sr.

**1939**

Hans Wolfgang Koestler

**1940**

Emma Drager Leek

Barbara Bierstedt  
 Edna Klatt Schmidt

**1941**

Ernestine Bleich  
 Mike Baumann

**1942**

Marlene Schipull  
 Zola Dacken  
 Gustav Bunkosfke  
 Trena Wiese

**1943**

Carl Leeck

**1944**

Everett Mittag  
 Ruby Kueck  
 John Whitford  
 Edwin Weiske

**1945**

Adelbert Hanna  
 Edward Bierstedt  
 PFC Joel Carter  
 Martha Bleich

**1946**

Anita Marie Weber  
 Caroline Marie Hasse  
 Ann Schneider

**1947**

Raymond Bierstedt  
 Meta Riedel

**1948**

Lydia Koestler  
 Martin Dreyer

**1949**

John Koestler  
 William C. Hoeck  
 Leonard Drager

**1950**

Eugene Behrends  
Mrs. Robert Voight  
William Hoeck

**1951**

Walter Faulstick  
Mrs. Charles Leeck  
Ernest Meyer

**1952**

Dick Sathoff  
Baby Dacken  
Gottlieb Bleich

**1953**

David Eimers  
Emil Leeck

**1954**

Mrs. Herman Rachut

**1955**

Bertha Jahr  
Louise Dacken  
Caroline Wiener  
Frank Schneider

**1956**

Henry Wiener  
Emil Jahr

**1957**

Louise Bleich  
Henry Dacken  
Gary Marlow

**1958**

Mrs. Alvina Powers

**1959**

Frederick Lavrenz  
Bertha Koestler  
Emma Kueck

**1960**

Mathilda Putz  
Henry E. Wiese

**1961**

None

**1962**

None

**1963**

Anna Drone  
Emma A Bleich  
Reinhold A Bleich

**1964**

Anna Bierstedt  
Diane Abbas  
Shawn Abbas

**1965**

Edna Riedel  
Emil Hasse  
Bert Miller  
William Bleich  
James Christensen  
Herman Putz

**1966**

Christian Haase  
Amanda Pettit  
Nellie Gifford  
Hans Boderius  
Ruth Hasse

**1967**

Edson Sabin  
Jennetta Lavrenz  
George Schneider  
Wilhelm Voight

**1968**

August Rosenthal  
Otto Laabs

Paul Krueger  
Carl Kueck

**1969**

Esther Miller

**1970**

August Schipull  
Ernest Behnkendorf

**1971**

Ernest Riedel  
Scott Lavrenz  
Lyle Marlow  
Herbert Wiese  
Martha Haase

**1972**

Mayme Otto  
George Markla  
Bertha Behnkendorf  
Lean Abbas

**1973**

Lawrence Schipull  
Rosa Wiese

**1974**

William Gifford

**1975**

Estel Rentz  
Henry Kueck  
Alfred Schadendorf  
Reinhard Potthoff  
Zelda Riedel  
Frederick Gebken

**1976**

Thues Abbas

**1977**

Mary Carol Fraser

**1978**

Albert Bleich  
Gerhard Nerem  
William Otto

**1979**

Herman Rachut  
Robert Voight  
Marie Dreyer

**1980**

Lewis Heerdt

**1981**

Wilfred Radig  
Anna Krueger  
George Hanna

**1982**

Mary Meyer  
Henry Schroeder

**1983**

Ella Meyer  
Erwin Schweitert  
Keith Briggs  
John Hargrove  
Irene Drager

**1984**

Hazel Mann  
Gordon Haase  
Martha Drager  
William Madsen  
Anna Potthoff

**1985**

Elsie Soderberg  
Russell Dittsworth  
Robert Schmidt Jr  
Carl Wiener  
LaVonne Skaggs  
Lillian Lavrenz  
Fred Bierstedt

**1986**

Emil Eimers  
Bernard Seegebarth  
Ida Peter  
Viola Cunningham  
Martin Voight  
Gertrude Schutjer

**1987**

Maynard Kueck

**1988**

Lucille Ethel Kueck  
Bertha S. Busch  
Nathalia C. Schealler

**1989**

George C. Koestler Jr  
Louis H. Riedel  
Ralph W. Bierstedt  
Nora E. Penny  
Lydia E. Schwietert

**1990**

Willie G Schealler  
Henry J Zinnel Jr

**1991**

Rudolph H Peter  
Anna A Reimers  
Edythe Wiener  
Rudolph G Willrett  
Ruth S Ditsworth

**1992**

Selma Rentz

**1993**

Florence M Schroeder  
Sara Nicole Schmidt  
Robert Allan Hanna  
Lilly Helen Bleich

**1994**

Arthur William Bartlett  
Margaret Kathriene Batt  
Thecla K Christensen  
Mervin Albert Jentz  
Luther Fairbanks  
Adella A Eimers

**1995**

Wayne C Mann  
Ernest F Lavrenz  
Angela McCann

**1996**

Carl W Reynolds  
Howard J Batt  
Thelma P Schmidt  
Floyd W Koepke  
John G (JG) Graham  
Joyce Graham

**1997**

Crystal Belle Kruse

**1998**

Carrol A (Short) Fraser  
Arthur C Bierstedt  
Veryl M Schmidt  
Jerry R Gifford

**1999**

Michael Glen Bettin  
Robert Herman Meyer  
Isabelle Mathilda Koepke  
Harold Henry Harry Herbon  
Billy Dean Gifford  
Alvina Anna Augusta Burris  
Mathilda Edna Clara Madsen  
Jerry William Wiener

**2000**

Richard Augusta Lavrenz  
 Dennis Wayne Shipler  
 Marietta Anna D Boderius  
 Ruth Elizabeth Nauman  
 Elisabeth Rosa Radig  
 Emma Lizzie K Bierstedt  
 Alan Dean Jahnke  
 Roland H Lavrenz

**2001**

Clara Anna Reynolds  
 Harley Doyle McFarland  
 Judith Marie Herzog

**2002**

Milton Carl Henry Riedel  
 Lyle Frank Fraser  
 Alice Arlene Fraser  
 Edward Merwyn Smith Jr  
 Robert Edward Schmidt  
 Hattie Viola Robinson  
 Ella Mae Cherland  
 Doris Anna Marie Larsen

**2003**

Jay Arthur Davis

**2004**

Merwyn (Jodie) Cunningham  
 Walter (Slim) H Dacken  
 David James Christensen

**2005**

Luella C Riedel  
 Betty Bee Christensen  
 August Jacob Bernau  
 Waldo Wayne Kruse  
 Phyllis Irene Gifford

**2006**

Bertha F Willrett

**2007**

Dorothy Ann M McFarland  
 Lois Bernice Bernau  
 Eugene (Bucky) L Drager

**2008**

Margaret Eleanor Bohn  
 Robert Wayne Wilhelmi  
 Bernice Janette Haase

**2009**

EJ (Julian) Cherland  
 Mennet (Jack) L Trunkhill  
 Albert C W Hasse  
 Betty Lou Roed

**2010**

Viola Dacken  
 Vicky Bowman-Hall

**2011**

Connie Steward

Paul H C Hasse

Roy Edward Roed

**2012**

June Isabel Bierstedt  
 Dorothy Viola Marlow  
 Arnold Duane Skadburg  
 Matthew Alexzander Steven

**2013**

Delbert Samuel Schealler

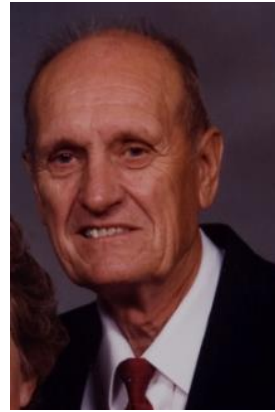
## Official Acts of St. Johns

	25 years	50 years	75 years	100 years
BAPTISMS	207	477	612	720
CONFIRMATIONS	166	410	566	707
MARRIAGES	58	155	207	253
BURIALS	44	112	190	277



**Oldest Female Members**

Florence Koestler 100 years  
and Luella Schadendorf 99 years



**Oldest Male Member**

Don Behnkendorf



**Longest Member of St John's Burt**

Caradene Parsons



**Longest Married Couple of St. John's Burt**

Don and Arlene Behnkendorf

June 19, 1949



## Church Organizations

### **AAL** - (history taken from the 1988 church history book)

St. John's Branch #1716 of Aid Association for Lutherans was chartered in 1929. During the first years, meetings were held only once a year with the election of officers and payment of dues.

In the past decade our branch has been involved in many worthwhile projects for members of our congregation and the communities in which we live. The Association has sponsored a variety of events from basketball games, suppers and coffees to aid some families from our area during difficult times.

They have also donated funds to our church towards the organ and piano funds and provided the materials for construction of storage space within the church.

In addition to their contributions within our church, they have freely given of their time and energy to our communities in donations to Kossuth hospital to purchase a defibrillator, Boy Scouts for camping equipment and donations to the Food Pantry.

This community minded Association has also contributed picnic tables, lighting systems, playground equipment. Tier latest project was sponsoring a community coffee with funds generated to be used to purchase new kitchen appliances for Burt's Community Center.

AAL has helped St. John's spread god's word for several years by providing helium filled balloons that have been set free on Easter morning. Each balloon contains a message of our Savior's arising and the name and address of our students. We have received several replies from within Iowa as well as neighboring states of Minnesota and Wisconsin.

1988 officers were Jack Trunkhill – President, Dennis Shieler, Vice-President, and Sue Person, Secretary-Treasurer.

\* AAL and Lutheran Brotherhood joined together and became Thrivent for Lutherans.

### **CRADLE ROLL**

In 2012 Ann Heyes gave up her roll as coordinating the Beginners Program after serving for many years. During the year we celebrated two children that were baptized at St. John's during the year, through Baptism God as added Addy Mae Hutchinson and Charley June Marlow. Ellanor Peterson and Zackery Steven are also on our current Nursery Cradle roll.

Each new member baptized is presented a hand embroidered napkin, candle, and a Thrivent Baptism medallion with each child's birth and baptism date on it. The medallion is engraved by Thrivent and Debra Steven has those done for each child.

Periodically during the year as the child grows materials are sent out to each child to remind them of their baptism and to the parents to help them with bringing them up in the Christian faith.

Debra and Mary Steven have taken over the roll as coordinators for the beginners program. Each child remains in this program from birth until they reach the age of 3 and join Sunday school.

## **LUTHERAN YOUTH FELLOWSHIP** (History taken from the 1988 church history book)

A young People's Society was organized in the early years of our church, probably the early 1902's. Under the guidance of Pastor Richmann, the Society in 1932, voted to obtain membership in the Walther League.

Our youth have undertaken many projects over the years. Some of these include construction of our college and service board (1968) and a bulletin board (1969), both still are in use in the church entry; the design and construction of a nativity scene (1974) that was place outside each Advent Season for several years. Our young people canvassed the congregation in 1978 for ordering new hymnals and also have made cash donation to the church (new piano), to Corn Cash, LFS, Helping Hand and building fund.

The name was change in 1971 to Lutheran Youth for Christ and again in 1982 to the current name of the organization Lutheran Youth Fellowship.

Through the yeas, there has always been a topic or bible study at each meeting followed by some recreation. Some of the favorites through the years include: Hayrides, bowling, sledding and volleyball.

For several years the youth of our congregation was responsible for Christmas decorating the church and filling of Christmas Eve Sacks for the children.

The presentation of the Easter Sunrise Service followed by breakfast being served has been a part of our youth's contribution to our church for many years. Also each year the group hosts a welcome supper for the newly confirmed and their families.

In recent year the LYF and their sponsors have organized many fund raising events in order to attend National Youth Conference in Texas and Washington D.C. Other activities included attend Passion Plays in South Dakota and Arkansas. Several members have attended the Iowa district West's Youth Gathering in Des Moines after Thanksgiving in addition to the fellowship activities at Zone Happenings.

1988 fundraisers were held to raise funds to go to the National Youth Gathering in Denver Colorado in August of 1989. They also hosted a zone happening in which they prepared and consumed a 30 foot ice cream sundae. Six members attended a weekend Iowa District West Youth Gathering in Des Moines.

In 1991 the LYF – Faithful Saints held their annual soup and pie lunch in January, attended Zone Happening, helped 3 confirmands to Camp Okoboji to attend Confirmands weekend and worked on planning the trip to National Youth Gathering in New Orleans in August 1992. In December, Rodney Eimers, Corey Shipler, Kirk Shipler, Shane Trunkhill, Chad Evans, Kim Evans, Sarah Knoll, Amy Person and sponsors Jack and Janice Trunkhill attend the Youth Gathering in Des Moines.

## LUTHERANS FOR LIFE

Kossuth Lutherans for Life is the local branch of the national, non-profit Lutherans for Life organizations headquarter in St. Paul, MN. The primary purpose of this organization is to provide information and educational materials to help individuals make god pleasing decisions regarding the dignity of human life.

## GREETERS

During the Every Member visit in January, many members suggested having members of the Church greet people at the door before Sunday Service. As a result the Greeting Program was organized by Mr. and Mrs. Richard Knoll and Janice Trunkhill on April 3, 1988.

## KIDS OF THE KINGDOM PRESCHOOL

Kids of the Kingdom Preschool was started in 1989, as an outreach of St. John's Lutheran Church to provide a Christian educational environment to share God's Word with students and families of small children. A board was formed to oversee operations and Esther Christiansen was hired as the first teacher. The preschool was set up to be a tuition-based funded entity and for many years the student population was enough to cover most of the expenses. The board pursued many fundraising efforts, the main one being a soup dinner in October of each year. This was overwhelmingly supported by St. John's members, preschool families and the community. The preschool also sponsored the pie and ice cream social in the afternoon of the Burt Summer Celebration, sold Christmas wreaths, cookie dough, candles, and hosted other smaller fundraisers. In addition to fundraisers, the school was blessed to have 'Friends' of the preschool who graciously donated financial support on a regular basis to help meet payroll account needs.



The preschool had a very special donor, Lilly Bleich, who on her passing made a generous contribution to the preschool. With those funds, we were able to purchase playground equipment and invest some monies to cover costs in the years where tuition was not enough. The preschool also was assisted by Thrivent Financial each year as they provided matching funds at our fundraisers.

In addition to Esther Christiansen, we were honored to have Connee Espe, Waunita Watt, Latasha Bleckwenn Bruhn, Sarah Petersen and Kristen Faber as our teachers. Assisting our teachers, have been very dedicated teacher aids. They included Sandra Harms, Connee Espe, Sylvia Loken and Donna Haase. Without them, the preschool could not have been what it was. The church secretary, Roseann Shipler, has served the preschool since its inception collecting tuition, greeting students and families and providing support to the teachers and board members.

Throughout the years the preschool was operated much as any preschool would. The children learned the love of God, through his word and the learning/play activities they did. Special celebrations were many, including visits from grandparents, dads and of course mom's day. The end of the year was celebrated in the early years with a preschool circus, where the children became circus performers for the night. This was a night many looked forward to.

The years of operation have been ones of varied enrollments. Some years we had enough students to have separate days and sessions for 3 year olds and 4-5 year olds. In the latter years, all ages were combined for a 3 day a week program. The 2012/2013 school year saw the board making a difficult decision to suspend operations due to lack of enrollment numbers. There is hope that the next year, there will be sufficient numbers, to once again have a preschool at St. John's.



## KOINONIA

St. John's Koinonia was organized in 1981 as an opportunity for St. John's Members to grow in Christian fellowship. On the evening of August 30, 1981 a group of 30 met at the Burt Shelter House for a Potluck supper and socializing as our first meeting. The name Koinonia was picked at this first meeting. This group was a fellowship group so the name was appropriate. At this meeting it was decided that we would meet on the 2<sup>nd</sup> Sunday of each month. Pastor Arlyn Sturtz was the resident Pastor at the time it was organized. The group continued these meetings for 30 years until 2010 when the group was dispersed.



During those 30 years the group had many fun times, lots of food and did service projects for church and community. Christmas was always fun as we would go caroling with members of church and the LYF group and enjoyed Christmas in the barn at the Berends Farm. Adopting a needy family was done each year at Christmas and gave us great joy of giving

back to others. We had hay rides (in our younger years), cake walks, painted the managers house at Camp Okoboji, attended a overnight Relationship retreat at Camp Okoboji, picnics and camp outs (inside and outside), games played, progressive dinners, bowling, Thanksgiving meals, Valentine parties, foreign food nights, Soup Nights, Donated and wrapped gifts for Katrina Hurricane Victims, served the Lenten coffees, had many speakers and presentations and oh those many fun white elephant gifts that were shared at Christmas. The one thing that this group enjoyed was food and each meeting involved some kind of unique food. Each meeting was closed with a devotional by the host for the evening. We enjoyed many good times together and we truly lived up to the name fellowship!!

Many members from the church participated over the years. Those who belonged all 30 years and helped see it come to an end were: Arnie and Bev Skadburg, Gene and Eunice Meyer, Roy and Betty Roed, Janice and Jack Trunkhill, Boyd and Rosann Shipler, Don and Pam Madsen, Kitty and Lynn Bierstedt and Rev. Jason and Sara Peterson.

The Lord truly has blessed us through all these years. Thanks be to God!

## **L.I.F.E**

(Lutherans Inspired by the Faithful Elderly)

*"I am come that they might have LIFE "... John 10:10b*

The **LIFE Committee** was formed in 1992 to assist with ministry to the older adults of St. Johns congregation and the community. Members of the first committee were Eunice Meyer, Jerry and Eva Wieners, Ruth Nerem, and Helen Smith. For seventeen years the committee was dedicated to helping seniors focus on our caring God who will sustain us as we age.

Ministries that the LIFE Committee organized included:

The **Adopt-a-Grandparent** program that provided a link between the children in our Sunday School and Religion School classes with the oldest members and shut-ins of our congregation. Each student was assigned a grandparent that they remembered during the year with cards and gifts on special occasions.

**Worship by Phone** began and is still being used at St. John's that provides 6 phone lines to shut-ins and others unable to attend a worship service. By dialing an unlisted number the caller is connected to the church's PA system and can listen to the entire church service. Also for those who need CD players and CD's are provided to shut-in members.

**Secret Prayer Partners** – The 7<sup>th</sup> and 8<sup>th</sup> grade students in Confirmation Class are assigned a Secret Prayer Partner who prays for them regularly and remembers them with notes of encouragement and small gifts placed in the Secret Prayer partners box. The names of the prayer partners are revealed at their confirmation.

**Johnny Parker** was a friendly face seen at the east door for years on Sunday mornings, opening the door and ready to assist anyone into the church or park cars.

**Senior Saints** was those who are 80 or older, are honored at the time of their birthday and biographies are published in the Parish Messenger entitled "Spotlight on Special Seniors".

Over the years many other activities were held. We organized the many Christmas Luncheons for the Community at the Community Center with decorations, lunch, and skits. Doris Gifford and Barb Harms always made us a great lunch. This was our way to open up to the community and fellowship together. The program "Tie-a-Knot and Say a Prayer" was the making of a fleece lap robe that was delivered to our shut-in and nursing home residents and tied by the congregation on Sundays. With the help of Laura Knoll and Janice Trunkhill members could have their Blood Pressure checked at the church on certain Sundays.

Members of our LIFE Committee over the years were: Eunice Meyer, Coordinator, Betty Roed, Helen Smith, Pam Madsen, Mary Schmidt, Connie Aaron, Jerry and Eva Wiener, Laura Knoll, Parish Nurse and Pastor Watt, Pastor Bereuter, Pastor Friedrich, Pastor Peterson.

## **MEN'S CLUB** (history taken from the 1988 church history book)

The Men's Club was an active organization from 1953 to 1965 and aided the local church as well as the Lutheran Church Missouri Synod. This group was affiliated with the Lutheran Layman's League and actively supported the Lutheran Hour.

The officers elected at the incorporation meeting in May 1953 were: President Merwyn Cunningham, Vice President Emil Eimers, Secretary Harold Eimers and Treasurer Bob Schmidt.

A few of their many worthwhile projects are summarized below: In the early 1950's the group donated \$50.00 to the Walther League to purchase a projector. In September 1954, the Men's Club hosted a surprise birthday party for Rev. Wittkopp with a program of music, skits and poems. One of the activities this organization oversaw was the packing of the Christmas Eve sacks for the children of the church.

In the spring of 1956 the Men's Club sponsored an oyster super for the community. The members of this group constructed signboards to be placed at entrance points to the town of Burt.

Following Bible School in the late 1950's the Men's Club hosted a watermelon fest in honor of the VBS and SS teachers and their families. Ground was broken for the playground project in 1960.

Many of the members played in a bi-monthly dart ball league with fellow Lutherans of the Algona circuit.

## ST. JOHN'S LADIES AID

St John's Ladies Aid was organized on October 13, 1921. There were seventeen charter members that decided they could be a greater service to God as a group. The Ladies Aid is a member of the Lutheran Women's Missionary League, becoming charter members in 1947. Through the collection of mite box offerings they support many district and international LWML projects.



The Aid's 60<sup>th</sup> Anniversary was observed in 1981. Former Pastor and Mrs. Scheer were special guests and told of their recent tour of the Holy Lands.

They attend and host the Northeast Zone spring and fall rallies. Through the years as an active quilting group they have made many mission quilts for Lutheran World Relief and Local charities.

There are currently 15 members. The oldest member is Florence Koestler, who will turn 100 on June 3, 2013. The current officers are: President Janice Schaeller, Vice President Esther Christensen, Secretary Caradene Parsons, Treasurer Pat Eimers, and Mite Chairman Bev Skadburg.

The Ladies Aid has truly been a source of many blessings in the past and with God's help can continue to grow in Christian service.

The Members of the Aid are an active group engaging in many worthwhile Christian activities. One of the biggest projects in past years was the furnishings for the new kitchen following church remodeling in 1964. The aid has been instrumental in maintenance of church property through the purchase of drapes, carpeting, tables and kitchen equipment.





## EVENING LWML/LWML

Evening LWML was organized in 1988 as a part of St. John's Ladies Aid. It was a means for women of the church who were unable to attend daytime meetings to be a part of the women's ministry of St. John's. Monthly meetings were held on a regular basis for bible study and fellowship and service projects were undertaken as a need was seen. Lunches were served by members at each meeting and when one member 'forgot' her turn, she promptly served up 'Werthers and Tic Tacs' to the group. The library was expanded in the church addition and the group adopted it as their project holding regular 'Library Coffees' to draw attention to the library and all it had to offer. Fundraisers were held over the years to provide funds for the library. They included Christian book sales and a Seder meal during Lent.

Quilts were tied for Lutheran World Relief for many years. IN 1995 we also made a quilt to sell at the Okoboji Bible Camp Auction. In 1995 we made and quilted the "Ohio Star Quilt"

ON November 2, 2002 we had a buffet of ethnic foods call the "St. John's Sampler." We decorated the tables according to the food served. We had tables from Italy, Sweden, Germany, Mexico, Ireland, England, America, the Orient, Denmark and Norway. The money we raised was sent to Lutheran Family Services of Iowa fro the 100 years of service. This in turn developed the idea of serving the same meal for Spring Rally and making up a cookbook of the recipes, with the proceeds of the sale going to the International Student Ministry in Ames. The members helped for many years with the Kids of the Kingdom Preschool soup dinner, by providing bars for the meal. In May of each year, members would have a 'Kitchen Improvement Festival' to clean and inventory the church kitchen.



Quilting "Ohio Star Quilt" for 1995 Bible Camp Auction. Irene Miller, Betty Roed and Beverly

In May of 2001, we held a Quilt Show. It was held in the church. We had many quilts, it was very well attended. That year we also used quilts for our LWML Christmas Tea. We decorated the tables & basement with Christmas quilts. In July 2003 we had an LWML toy drive, the toys were sent to Hope Mission in Des Moines.

It was a fun time of fellowship and even resulted in the 'baptism' of some members with the spray nozzle. June found us having a Ladies night out at an area restaurant, with ladies of the congregation and other guests invited to join us. New babies in the congregation were welcomed with a gift and a meal was taken to the family. In early years, the two LWML groups would have a Christmas luncheon the first Saturday of December. Over the years,





it evolved into a Christmas coffee after church for the whole congregation. In recent years, membership in the evening group has been difficult to maintain. In 2013, it was decided to quit having regular formal meetings, but to keep the group active. We will continue to take care of the kitchen cleaning and having coffees. Meetings will be held on an occasional basis.

We thank the Lord for the many years we had as a group and hope membership will help us grow in the future.



September LWML Meeting 2003 "School Time" Betty Roed and Eunice Meyer



#### Christmas LWML 2003

##### Back Row

Pastor Watt, Dorothy McFarland, Betty Roed, Arlene Behnkendorf, Luella Schadendorf, Beverly Skadburg, Caradene Parsons,

##### Front Row

Bertha Willrett, Dorothy Marlow, Lois Bernau, Caroline Kressin, Ruth Nerem, June Bierstedt

Gifts for Mission Lutheran Family Services

## **CHRISTIAN EDUCATION** (history taken from the 1988 church history book)

Although the Sunday school was not organized until around 1929 by Rev. Richmann, the main goal of the early church school was confirmation. These classes were taught by the pastors on Saturday. Seventh and eight grade students usually attended two years. The German language was used for instruction at St. John's until 1916. During the pastorage of Rev. Scheer in 1962, the religious training for children has increased with the formation of Religion School on Wednesday evening for children in grades 3-8. In 1988 there were 28 children enrolled in Religion School with five instructors.

Our children get an early start in learning as they begin the nursery class when they turn three years old. There are classes taught for all school age children through 8<sup>th</sup> grade. In addition, there is a high school Bible study on Sunday and adult Bible studies held through out the week.

Fro several years prior to church remodeling in 1964, some classes were held in a small house east of the church. In 1979, the former parsonage was converted into a K-8 educational facility. The remaining classes are held in the church building.

In 1988 there were a total of 115 students and adults enrolled in study under the guidance of 14 teachers.

The flannel graph teaching technique that is still in use today was first introduced by Mrs. Wittkopp in the early 1950's.

Sunday school picnics were held annually for many years with treats and recreation. These family gatherings were held in a large grove of trees that once stood on the SW edge of Burt.

After all public schools are dismissed in the spring, we have Vacation Bible School. VBS was first organized and directed by Pastors Reith and Wittkopp in 1949-1950. In past years the VBS program has been guided by some very capable members of our congregation including June Bierstedt and Eunice Meyer. 57 children were enrolled in 1987,

In the early years of the program, classes were taught all day for two weeks. In recent years Bible study, music, and crafts have been condensed into five half day sessions. All children in the community are invited to take part.

One of the highlights of the VBS week is the visiting of St. John shut-ins and seniors, presenting them with a gift and songs learned during the week. During the Sunday service following VBS week, the children present at program for the whole congregation

A new form of VBS was introduced to our Jr. High age children in 1985 with an overnight campout with studies, music and crafts held the weekend prior to VBS start. Many of these young people then acted as teachers aides during the VBS week.

Christmas has always been a special time for the children as they present the Christmas Eve program. The wonder and mystery of the story of Jesus has been told in many ways by acting out skits, singing

songs and memorizing Bible verses. At the close of the evening it was always a treat for the children to receive a sack filled with candy, nuts and fruits.

In 1991 we had 47 students enrolled in Sunday school, with Mary Melick serving as Sunday school superintendent and Janice Trunkhill in charge of the cradle roll. Tapes were purchased with memorial money for the children to watch.

2012 brought a new change when Sunday school superintendent Karla Schutter introduced a VBS style of Sunday school format. At 8 am the children went downstairs for opening for 15 minutes, then to their individual class rooms for 15 minutes for lessons and then returned to the downstairs for a craft or snack based on the lesson. Just prior to the start of church services at 9 am, the children would then show off their crafts to the congregation.



**Marcia Hanna – Organist**



**Choir**



**Roger Lavrenz – Head Usher**



**Sunday School**

## ST JOHN'S 100<sup>TH</sup> ANNIVERSARY COMMITTEE

The Centennial Celebration Committee had their first meeting on April 14<sup>th</sup>, 2011. Of the twenty-two members who signed up to help organize the 2013 St John's Centennial Celebration, eight were present. Currently we have 34 volunteers.

Lynn Bierstedt volunteered to serve as Chairman, Vern Koestler - Secretary/Treasurer, Darrel and Mary Schmidt – Meals, Jeff and Brenda Schutjer – Special Projects, Pastor Peterson – Pastor Organizer, Deb Steven – Centennial History Book, Vern Koestler and Rosann Shieler – Mailing list and Kitty Bierstedt – Special Music. Corey Shieler was asked to design a Centennial Logo for the committee.

By the third meeting Esther Christensen volunteered to be the Centennial Picture Directory chairperson. Conrad Schmidt volunteered to take the directory pictures and put the directory together; pictures were taken September 14, 15 and 16, 2012.

By the sixth meeting, Linda Kerkove was the publicity chairperson. Randy and Pam Reimers were chairpersons for the Memorabilia committee. The Memorabilia Committee ordered Centennial pens and passed some out at Burt Days. They are also offering for sale, Red Wing pottery consisting of cream can and coffee cups with the Centennial Logo on them. This is a big fundraiser, which we hope can finance our celebration in the months of 2013 and leading up to the final event on July 14<sup>th</sup> with Pastor Pulse as our guest pastor. We will serve a meal and have special music at this event.



Guest pastors in 2013:

January 13 - Pastor Sieveking

February 17 - Pastor Watt

February 24 - Pastor Turner

March 10 - Pastor Friedrich

May 26 - Pastor Reimers

July 14 - Pastor Pulse

Pastor Bereuter was our guest Pastor on July 15<sup>th</sup>, 2012.

A reception for each visiting Pastor and family will be held in the church basement following the church service.

Karen Karels and Cheryl Batt are chairpersons for the Fund Raising committee.

Four fundraisers have been held. Linda Peter donated a Parament Banner she made from old Paraments from St. Johns. It was divided into eleven sections and each section was put up for bids for

one month. At the end of eleven months a total of \$2,460 was raised from the silent auction. On April 15<sup>th</sup> a Potato Bake and Live Auction raised \$2,393.36. July 14, at Burt Days the Mission board sold pie and ice cream with all profits for the Centennial Committee being \$412.25. October 21<sup>st</sup> the Pre School Board held a Soup Luncheon and profit was \$941.

In February 2012 Vicki Madsen, Donna Hasse and Sarah Peterson formed the Cook Book committee. In December Don Madsen volunteered to head up the St John's Road Show committee.

The Special Project committee, chaired by Jeff and Brenda Schutjer and the Centennial Celebration Committee, selected as their project to landscape the Vaske lot and have it ready for the Centennial Celebration on July 14<sup>th</sup>, 2013. This project was completed in November 2012. It consisted of leveling and seeding the lot, adding a circle of landscaping blocks for the monument marker with a picture of St John's Lutheran Church an inscription from Ephesians 2:8 on it. From the parking lot there is a brick walk with a cross in it leading to the monument. Three trees border the monument. The committee has discussed adding flowers to the lot in the spring of 2013.

The invitation inviting all past and present members, baptized, confirmed and transferees will be mailed in January, 2013. The Centennial Committee is planning for a large attendance at all events.

Vern G Koestler, Centennial Celebration Secretary/Treasurer

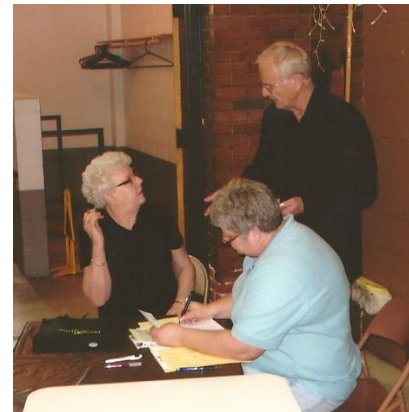


St. John's 100<sup>th</sup> Anniversary  
Committee

Jeff Schutjer – Special Projects  
Mary Schmidt – Meals  
Debra Steven – History Book  
Pam Reimers- Memorabilia  
Vern Koestler – Secretary/Treasurer  
Lynn Bierstedt – Chairman  
Pastor Peterson – Pastor Organizer  
Linda Kerkove - Publicity  
Rosann Shipler – Mailing List  
Boyd Shipler – Grounds Committee



## 100<sup>TH</sup> ANNIVERSARY FUNDRAISER APRIL 15, 2012



## WHERE ARE OUR PASTORS NOW?

### Rev Henry W Friedrich

ST. JOHN, BURT

Rev. Henry W. Friedrich – Interim / Vacancy Pastor

A Summary of My service to St. John, Burt

1999 – 2001

When Pastor Bereuter accepted the Call to Kansas City St. John congregation asked me to serve as Vacancy Pastor. A Farewell for Pastor B. was held on July 18, 1999. My first service at St. John was July 25. When Pastor David Schultz was installed as pastor at St. John, Fenton on Aug 1, 1999, I had only St. John, Burt to serve.



Pastor and Mrs. Friedrich

St. John was intent on calling a pastor who would serve their needs. After completing a self-study and evaluation of ministerial needs the first Call was extended on Jan. 5, 2000. The calling process continued through 2000 without success. After having their Call declined several times St John congregation decided to extend a Call for a Candidate. We rejoiced when on June 16, 2001 Candidate Jonathan Watt was installed as Pastor of St. John. We prayed that his Ministry might be a blessing to Pastor and people.

My records are incomplete regarding all of the activities carried out during the vacancy – Confirmation Classes, S.S., V.B.S., the various meetings held; Calls made on the sick, shut-ins, dying; the baptisms, confirmations, marriages, funerals celebrated. God was at work through Word and Sacrament to extend His Church.

2001 – 2005

In late summer of 2001 I began to serve Zion, Lu Verne. When Immanuel, Livermore also became vacant the decision was made to form a dual parish, and a Call was extended for a candidate. St. Paul, Garner became vacant in March 2004. I served them until Pastor Glawatz was installed in June 2005.

2005-2006

When Pastor Watt accepted a Call to South Dakota, I again began to serve St. John as Vacancy Pastor in Oct. 2005. St. John again decided to call a Candidate from the Seminary. This call was filled when Rev. Jason Peterson was installed on July 2, 2006.

2006-2011

When Pastor Mark Peterson left the pastorate at Livermore and Lu Verne in July 2006 I again began to serve this Dual Parish. I continued to serve them until Jan. 1, 2011 when I retired. Presently I serve Trinity, Algona as Visitation Pastor, a position I have held since 1999.

## Rev. Arthur L Schultz

Fellow recipients of God's marvelous grace,

Having been informed that this year is the 100<sup>th</sup> anniversary of the existence of St. John's, but not being able to attend any of the festival services, I will extend my greetings by means of this letter. I had the privilege of participating in a small part of the 100 years of St. John's history, serving as pastor 1957-1961.

In the 75<sup>th</sup> anniversary book of St. John's I found that the congregation granted me permission to investigate possibilities of mission work in the Armstrong and Swea City area and, later, to spend one day per week in working in that area. It was also decided that I, as pastor, could partake of Holy Communion with the congregation as administered by an Elder.



There are other things that I recall about my family's time at Burt. We arrived there at the beginning of winter, having moved from Texas. Members of the congregation were very helpful in seeing to it that our children had adequate clothing for the weather in northern Iowa. A couple of years later, when my wife, Norma, needed to have heart surgery, members of the congregation rallied around our family with every kind of help and support.

An interesting and remarkable occurrence during our years there is the rather frequent change of church organists during the time. When the organist in place at the beginning of our time there was blessed with the expectation of a new child in her family, another organist took over. After about a year this new organist found herself expecting. A third organist took over and the same necessity took place. By this time the first organist was ready to take responsibility for the position.

May members of St. John's find in looking over the past the hand of blessing from God. Those blessings have been beyond all deserving and expectation. May you look to the future with confidence that God's blessings in Christ are rich and sure!

In the order of service for the 100<sup>th</sup> anniversary of the Iowa Districts is a hymn I wrote. That hymn expresses my hopes and prayers for you and your anniversary.

Praise and thanksgiving to our gracious and glorious God!

Rev. Arthur L Schultz



## Rev. David Tews

Pastor Tews served in Burt and Swea City from 1972 -1977. He served in Saukville Wisconsin (20 miles north of Milwaukee) until Nov. 1996. He continues as a full time pastor at Shepherd of the Hills Lutheran Church in Horseshoe Bend, Arkansas – a small primarily retirement community in North Central Arkansas.



Pastor had four sons. Bernard, his oldest, died in a drowning accident in 1986 and is buried in Algona, Iowa. His son Gerald and wife Stephanie live in New Glarus Wisconsin with their 3 children; Lily (12), Brodie (10) and Sydney (5). Gerald works in Madison for an engineering firm. Richard and his wife Robin live with their son Eli (18 Months) in Oxford, Arkansas about 15 minutes from Horseshoe Bend. Robert lives in San Diego CA and works for Cox Communications.

Pastor Tews retired in 2002 from the Arkansas National Guard after 20 years with the Wisconsin National Guard as well as the Arkansas guard as Chaplain with a rank of Major.

He met and married Karen Emberson in 1982 in West Bend Wisconsin. She is a retired social worker. Pastor Tews continues to be an avid gardener and still rides his motorcycle!

## Jeffrey H. Pulse, S.T.M.

*Associate Professor of Exegetical Theology*  
*Director of Vicarage*  
*Director of Placement*  
*Director of Continuing Education*  
[Jeffrey.Pulse@ctsfiw.edu](mailto:Jeffrey.Pulse@ctsfiw.edu)



Professor Pulse joined the CTS faculty in 2007. Following graduation from Concordia Teachers College in Seward, Nebraska, with a B.S. in Elementary Education (1980), he attended Concordia Theological Seminary, Fort Wayne, completing his M.Div. in 1984. His 22 years in the parish were served in St. John's Lutheran Church, Burt, Iowa and Peace Lutheran, Bremerton, Washington. He completed his S.T.M. from CTS while in the parish in 1990. Professor Pulse is currently a Ph.D. candidate at the University of Durham, England, in the area of Old Testament, specifically, Concepts of the Afterlife in the Old Testament and Second Temple Judaism. He has published two books: *The Children (Not the Adults) of God*, Winepress Publishing, 2002; *A Year in the Old Testament: Meditations for Each Day of the Church Year*, CPH, 2012.

## **Jonathan Charles Watt**

After leaving St. Johns, Burt the Watt family served at St. John's, Howard, South Dakota for four years. During that time Waunita worked as a day care worker and after schooling in Pierre served as 911 dispatcher for Miner County. Pastor Watt also served as an EMT for Miner County for one year. Miciah and Hannah attended Howard Public schools. Joshua continued his studies at ISU.

In August of 2008 Pastor Watt received a call to serve at Trinity Evangelical Lutheran Church, Creston, Iowa. After deliberation and prayer the call was accepted and the Watt family move to Creston in September. Miciah enrolled in Creston High School and participated in theatre and band. Hannah enrolled in Creston Grade School. Waunita worked for a temporary employment agency until she began full time at Fansteel / Wellman Dynamics (a foundry) in the Human Resources department. She worked there for one year before moving on to Barker Implement. At Barker she works in the accounting department. Joshua graduated from ISU and took employment with Garmin in Kansas City. Last year he was married to Kristin Noack. Miciah graduated and attended Patrick Henry College in Purcellville, VA. She is in the process of transferring to ISU. Hannah is in Creston Middle School. Besides the normal pastoral duties, Pastor Watt has been involved in Habitat for Humanity in Creston. He was recently elected as Circuit Counselor for the South West District. He is also serving at First Lutheran Church, Mount Ayr, IA as vacancy pastor.



---

## **Rev. Jason P. Peterson**

---



Pastor Peterson graduated from Concordia Theological Seminary – Fort Wayne in May, 2006, and was ordained at St. Paul Lutheran – Millington, MI on June 25. After moving to Burt with his wife, Sarah on June 30, he was installed as the pastor of St. John's on July 2, 2006.

During their time at St. John's, Pastor and Sarah were blessed with three daughters—Lillian 2007, Emalee in 2009, and Ellanor in 2011. They are expecting a son in April of 2013. Lillian attends Kindergarten, and Emalee preschool at Algona. Sarah is a 2006 graduate as a Lutheran School Teacher from Concordia University – River Forest, IL and from 2006 until 2011; Sarah served as the teacher of Kids of the Kingdom Preschool at St. John's. Since then has stayed home with their children full-time.

During his time at St. John's, Pastor Peterson has served in many capacities throughout the community in Burt and Algona, as well as broader service to Iowa District West and other district organizations. Of particular note is his service as Track Chaplain at Algona Raceway from 2008 until the present time and his column every-other-week in the Algona Upper Des Moines and Bancroft Register since 2009. In 2011, he began service as the vacancy pastor at Zion LuVerne; a he is currently collaborating with other local pastors to find innovative solutions for rural parishes to continue providing ministry to their communities even without a full-time pastor in each parish.

## NATIVE SON OF ST. JOHN'S



Russell D. Reimers was born in Algona, Iowa on November 21, 1955 to Donald and Janice (Madsen) Reimers on November 21, 1955. He was baptized and confirmed at St. John's Lutheran Church. Burt. He attended grade school and High school in Burt, Iowa.

In 1976 he went to work for the city of Burt as the Supt. Of Public Works. He worked for the city of Burt until September 1984 when he went to work for AAL. In the summer of 1985 he started school at Iowa Lakes Community College for a degree in Business Administration. In the fall of 1986 Russell moved to Seward, Nebraska to attend Concordia Teachers College.

On July 11, 1987 he married Susan Sebby the daughter of Donald and Marie Sebby. They moved to Sparta, Illinois where Susan was an intern for director of Christian Education. They moved by to Seward Nebraska in August 1988 to finish Russell's last year at Concordia Teachers College.

Russell began classes at Concordia Theological Seminary in September 1989. Russell was assigned to King of Kings Lutheran Church in Cedar Rapids Iowa where he served his vicarage year. Russell graduated May 20, 1993 and was granted the Master of Divinity Degree. He has been certified by the Lutheran Church-Missouri Synod for the office of public ministry and called by God to serve as pastor of St. Paul's Lutheran Church in Wilbert, Minnesota.

July 18, 1993 Rev. Russell D. Reimers was ordained at St. John's Lutheran Church in Burt Iowa.

On August 8, 1993 he was installed at St. Paul's Lutheran Church in Wilbert, MN. St. Paul's Lutheran was a single parish from 1993 until July 2003 when it became a Dual Parish with Our Savior's Lutheran Church in Ceylon following the closing of the church in Dannel MN. Rev. Reimers still serves these two parishes to the present day. In August of 1999 Rev. Russell and Susan began to do foster work for Martin County, MN. Over the years they have taken in many kids who needed a home for a short time while their parents made their homes safe. In June of 2004 Rev. Russell and Susan adopted two girls through the foster care program, Jewel who was 5 years old and Alacha who was 2 years old at the time. Rev. Reimers serves the Minnesota South District, St. Paul's Lutheran, and Our Savior's on many committees and other outreach programs.



**May the Lord Bless you and Keep You**

**The Lord make His face shine upon you and  
be gracious to you.**

**The Lord look upon you with favor and give you peace.**

**Go in Peace and Serve the Lord**